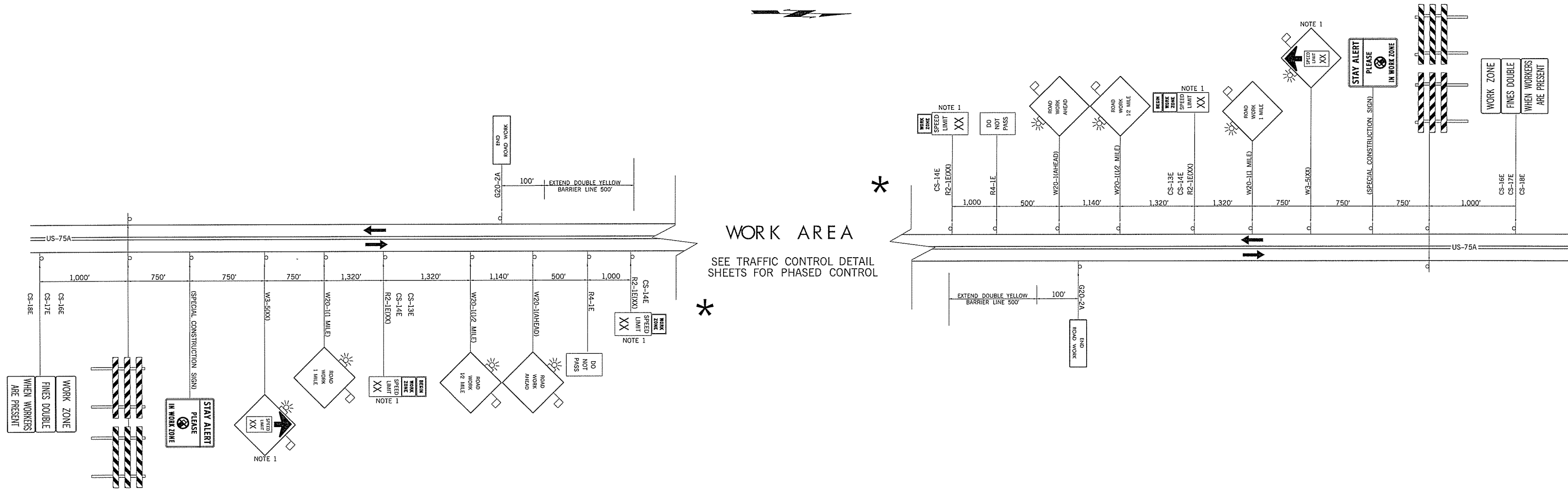


REV. NO.	DESCRIPTION	REVISIONS	DATE



NOTE 1  
CONSTRUCTION SPEED LIMIT TO BE DETERMINED BY THE DIVISION ENGINEER.

ALL CONFLICTING PAVEMENT MARKINGS AND RAISED PAVEMENT MARKER REFLECTORS SHALL BE REMOVED. AFTER COMPLETION OF THE WORK, THE TEMPORARY INAPPLICABLE PAVEMENT MARKINGS SHALL BE REMOVED.

DRIVEWAY ACCESS SHALL BE OPEN AND MAINTAINED AT ALL TIMES.

FOR ADDITIONAL INFORMATION ABOUT TAPER LENGTHS AND SPACING OF CHANNELIZING DEVICES, SEE STANDARD DRAWING TCS2-1-(LATEST REVISION).

KEY:  
-P SIGN

DRAWING NOT TO SCALE

<b>TRAFFIC CONTROL ADVANCED WARNING</b>		Drawn	VLR	1/16
		Design	VLR	1/16
		Checked	JLS	1/16
		Traffic Engineering GROUP 2		
STATE OF OKLAHOMA		DEPARTMENT OF TRANSPORTATION		
DIVISION 8		STATE JOB NO. 27075(04)		
CREEK COUNTY		US-75A		