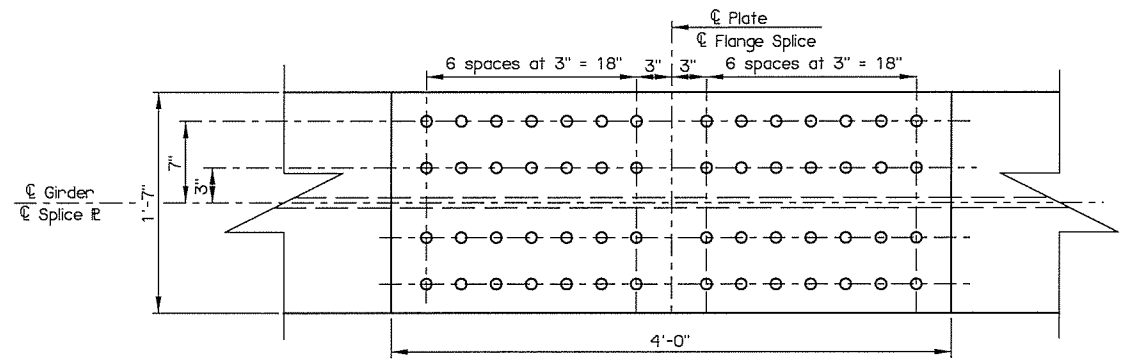
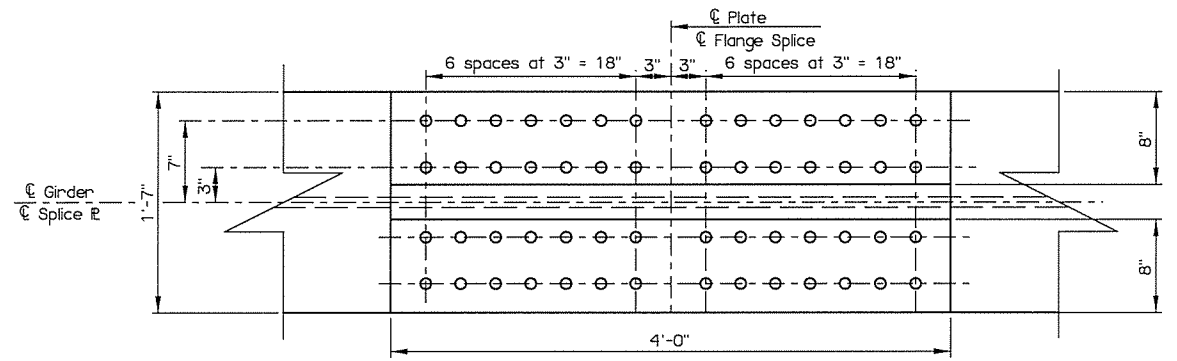


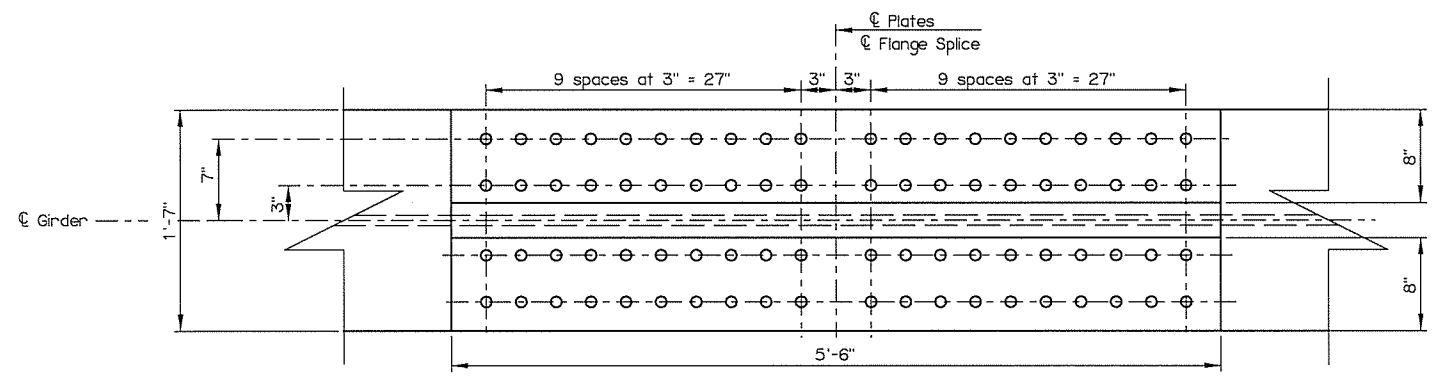
REV. NO.	DESCRIPTION	REVISIONS	DATE



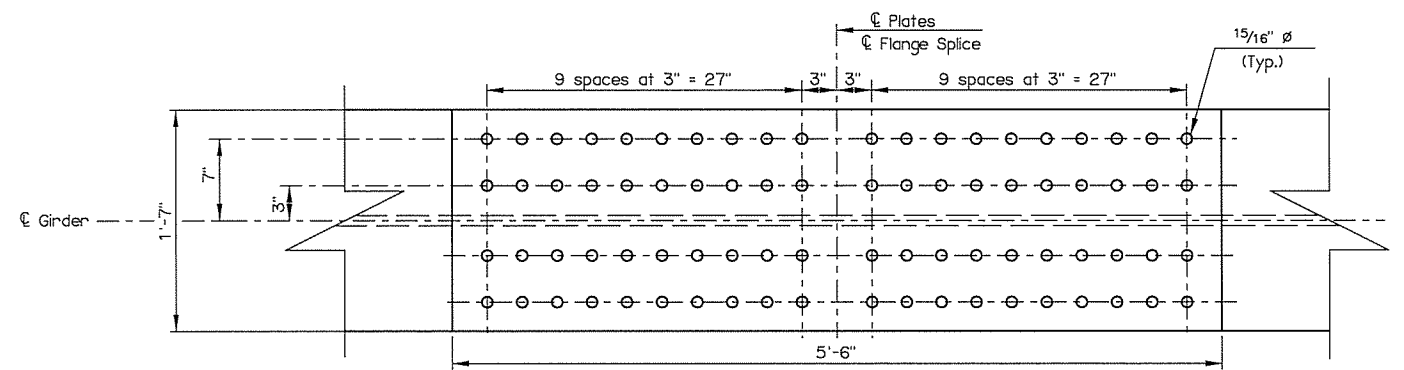
**TOP FLANGE OUTER SPLICE PLATE**  
Symmetrical about  $\bar{C}$  Splice and  $\bar{C}$  Girder



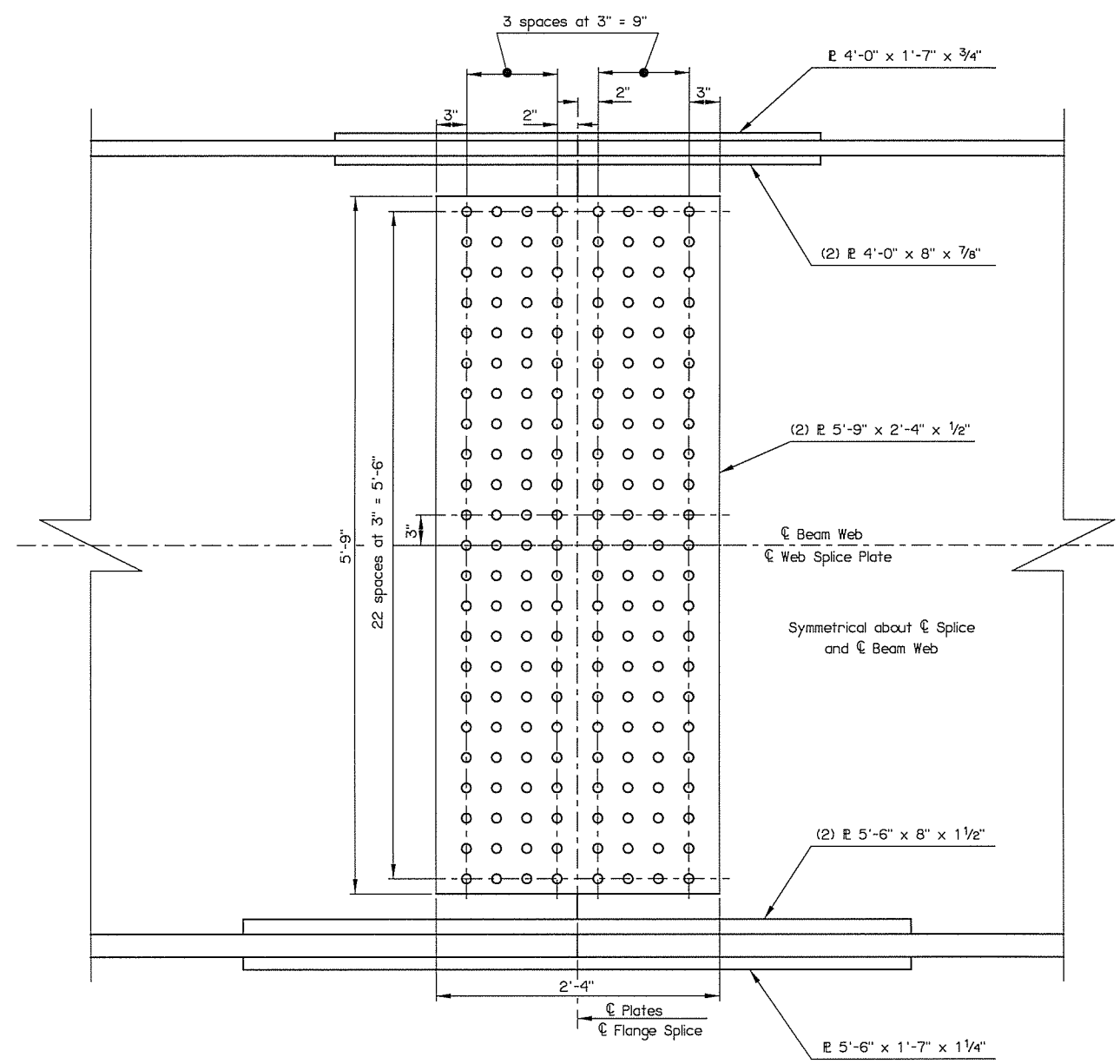
**TOP FLANGE INNER SPLICE PLATE**  
Symmetrical about  $\bar{C}$  Splice and  $\bar{C}$  Girder



**BOTTOM FLANGE SPLICE INNER PLATES**  
Symmetrical about  $\bar{C}$  Splice and  $\bar{C}$  Girder



**BOTTOM FLANGE SPLICE OUTER PLATE**  
Symmetrical about  $\bar{C}$  Splice and  $\bar{C}$  Girder



**ELEVATION**  
Splice Location (Typ.)

Note: Use 7/8"  $\varnothing$  A325 Bolts all Locations

US 75A OVER BNSF RR BRIDGE 'A'	CREEK COUNTY	Design	KAB	9/15
<b>DETAILS OF SPLICE PLATES</b>		Detail	RWM	10/15
		Check	KMS	12/15
STATE OF OKLAHOMA		DEPARTMENT OF TRANSPORTATION	Engr. ELYAZGI	SHEET NO. 65
JOB PIECE NO. 27075(04)				