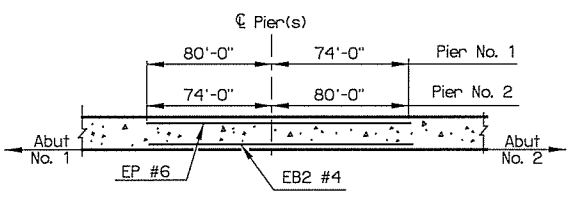


REV. NO.	DESCRIPTION	REVISIONS	DATE

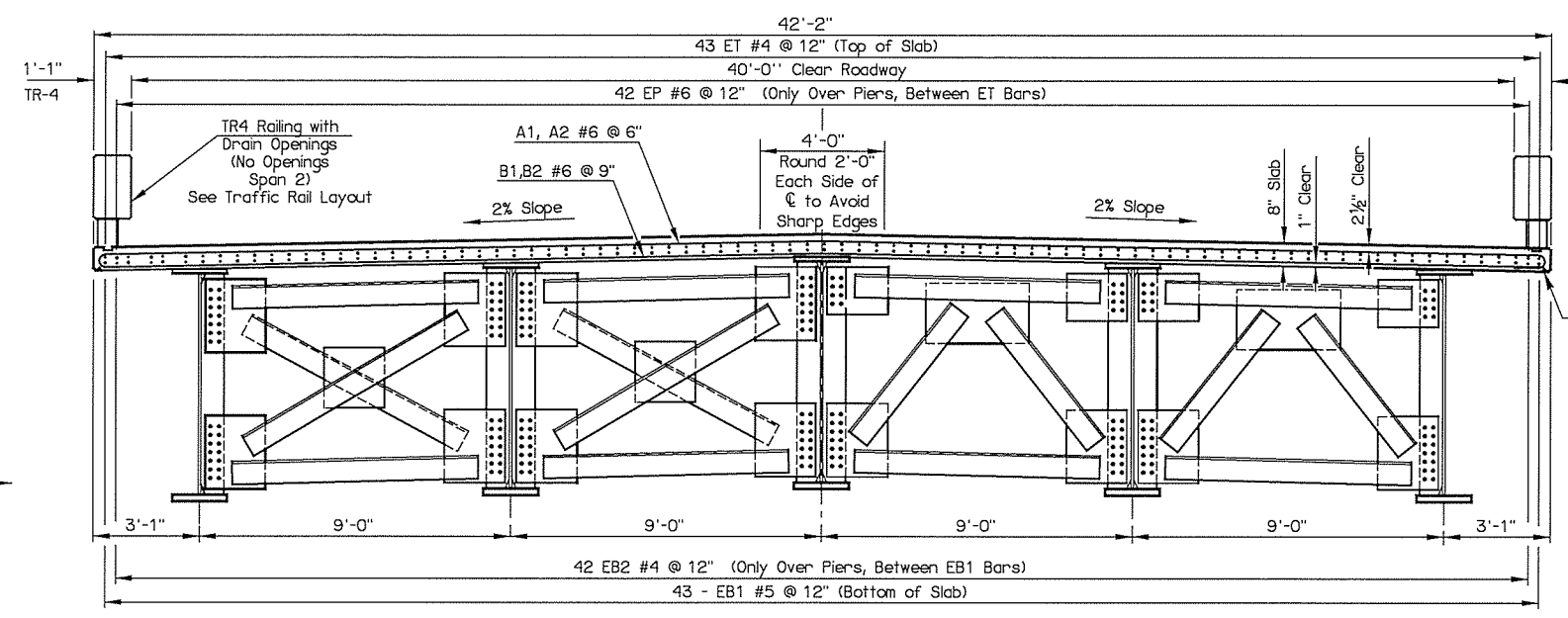
NOTE: For bar bends and bar list, see Superstructure Bar List. Rotate hooks on A bars to maintain minimum clearance.

NOTE: Install all Diaphragms/Crossframes and tighten all Bolts before placing concrete for the Bridge Deck or applying other massive loads to the Beams.



- Notes:
- 4' lap length; no laps within 10' of Pier C
  - ET and EB1 bars not shown for clarity

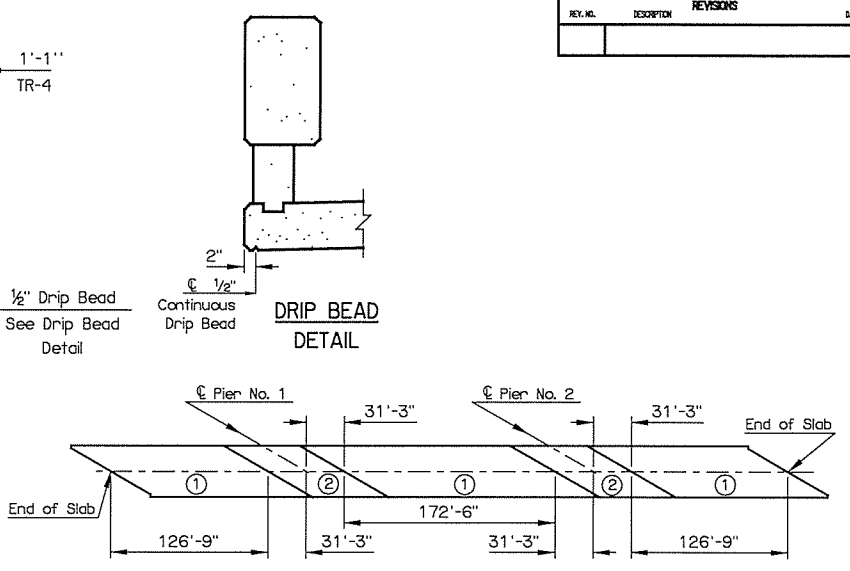
DETAIL OF ADDITIONAL BARS OVER PIERS



HALF SECTION AT INTERMEDIATE DIAPHRAGM

TYPICAL SECTION

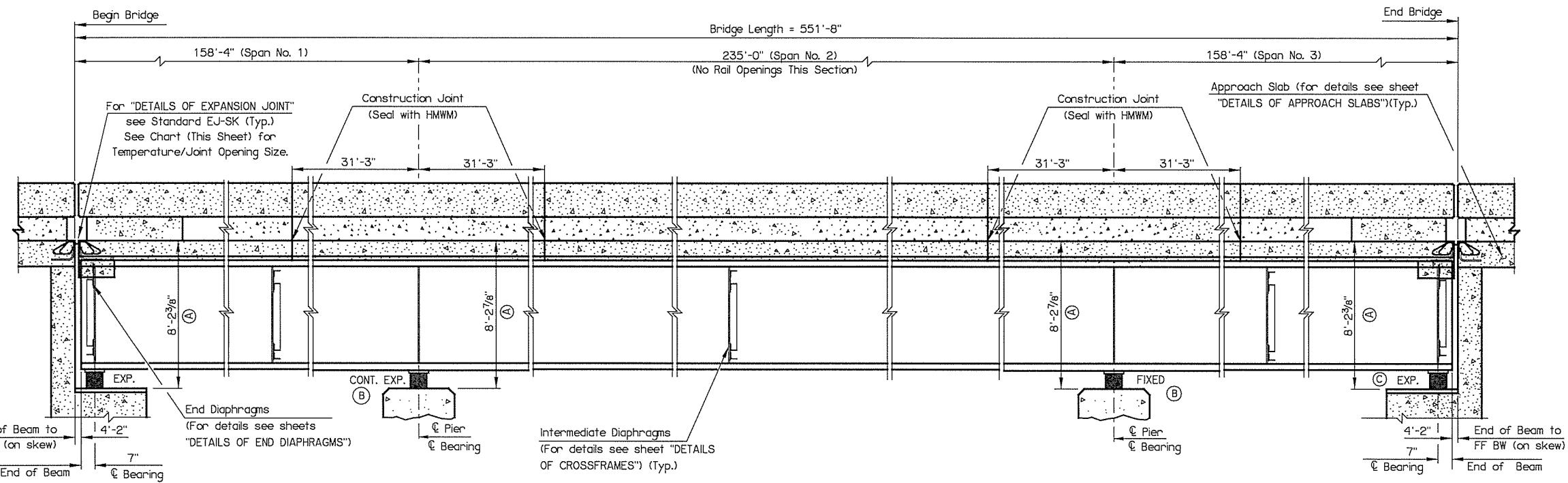
HALF SECTION AT END DIAPHRAGM



CONCRETE SLAB POURING SEQUENCE

NOTE: All sections ① shall be poured before sections ②. Allow 48 hours between pouring sections ① and ②.

EXPANSION JOINT OPENING SETTINGS			
Exp. Joint	Abut. No. 1	Exp. Joint	Abut. No. 2
Temp. (Deg. F)	Dim.	Temp. (Deg. F)	Dim.
98	1"	96	1 1/8"
94	1 1/8"	86	1 3/4"
90	1 1/4"	75	1 7/8"
86	1 5/8"	65	2"
81	1 1/2"	55	2 1/8"
77	1 3/8"	44	2 1/2"
73	1 3/4"	34	2 3/8"
69	1 7/8"		
65	2"		
61	2 1/8"		
57	2 1/4"		
53	2 3/8"		
49	2 1/2"		
44	2 7/8"		
40	2 3/4"		
36	2 1/8"		
32	3"		



LONGITUDINAL SECTION

All Dimensions are taken along C of Beam.

SUPERSTRUCTURE QUANTITIES		
ITEM	UNIT	TOTAL
Saw-Cut Grooving	S.Y.	2,183.00
Sealed Expansion Joint	L.F.	161.50
Concrete Traffic Rail (TR-4)	L.F.	1,103.40
Structural Steel	LB.	1,580,140.00
Stainless Steel Fixed Bearing Assemblies	EA.	5.00
Stainless Steel Exp. Bearing Assemblies	EA.	15.00
Class AA Concrete	C.Y.	640.90
Epoxy Coated Reinforcing Steel	LB.	202,830.00
Water Repellent (Visually Inspected)	S.Y.	982.00
Sealer Crack Preparation	L.F.	320.0
Sealer Resin	GAL.	2.20

- (A) Dimension is from top of Deck Slab to bottom of Bearing Assembly at C of Bearing.
- (B) Fixed or Continuous Expansion designation indicates continuous Deck Slab over Pier. See GENERAL PLAN AND ELEVATION sheet for locations of Fixed or Continuous Expansion Bearing assemblies. Install Fixed Bearing assemblies at Fixed Bearing locations and install Expansion Bearings assemblies at Continuous Expansion Bearing locations.

- (C) Expansion designation indicates Sealed Expansion Joint in Deck Slab over Abutments, requiring Expansion Bearing Assemblies. See GENERAL PLAN AND ELEVATION sheet for locations of Expansion Bearing assemblies and, if required, Fixed Bearing assemblies.

Note: Do not apply Saw-Cut Grooving within 6" of Formed/Sawed Construction Joints or within 3" of Expansion/Contraction Joints.

US 75A OVER BNSF RR BRIDGE 'A' CREEK COUNTY

DETAILS OF SUPERSTRUCTURE (LONGITUDINAL SECTION)

STATE OF OKLAHOMA DEPARTMENT OF TRANSPORTATION

Design: KAB 11/15  
Detail: RWM 02/16  
Check: KMS 02/16  
Spot: MAYFIELD  
Eng: ELYAZGI

JOB PECE NO. 27075(04) SHEET NO. 61