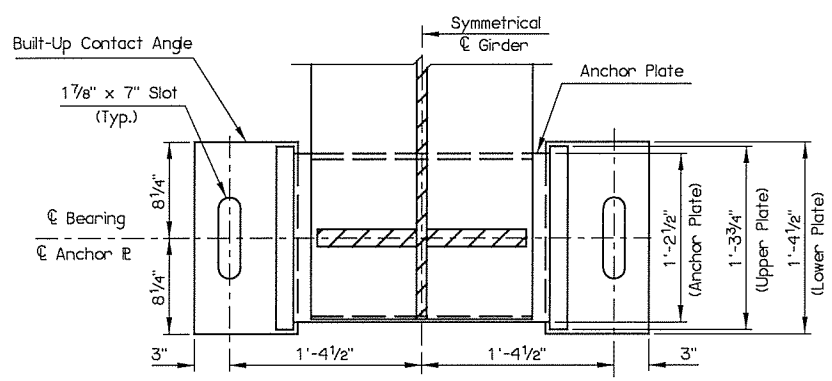
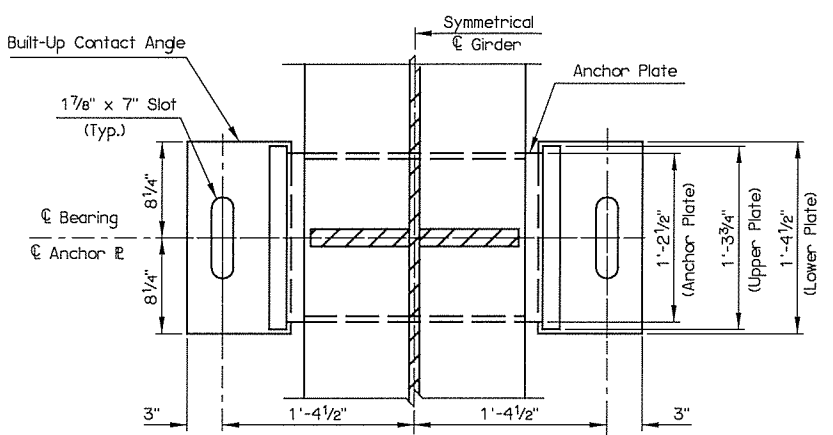


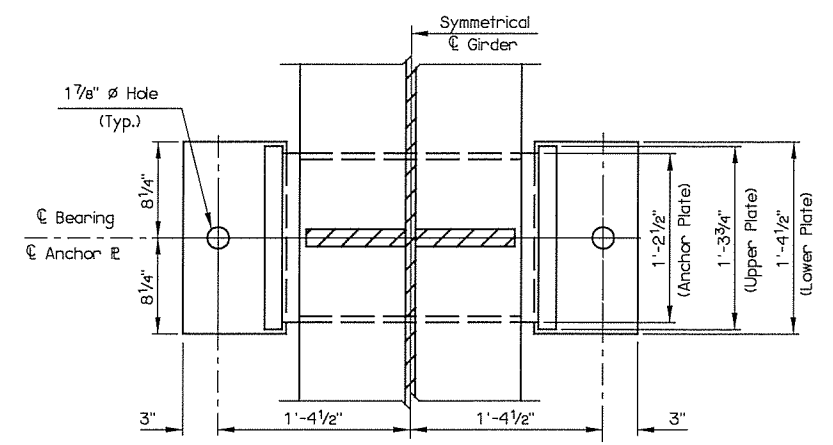
REV. NO.	DESCRIPTION	REVISIONS	DATE



PLAN VIEW  
EXPANSION BEARING AT ABUT. NO. 1 & 2

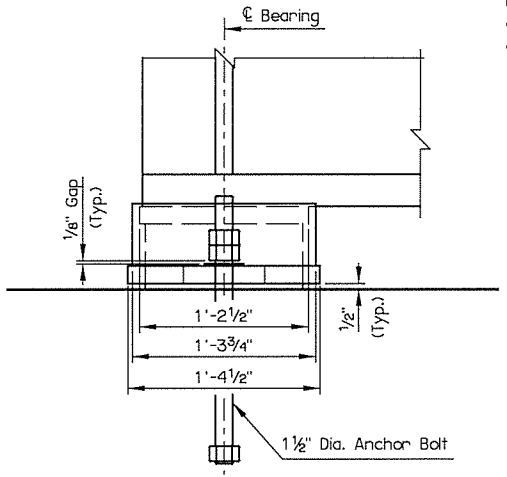


PLAN VIEW  
EXPANSION BEARING AT PIER NO. 1

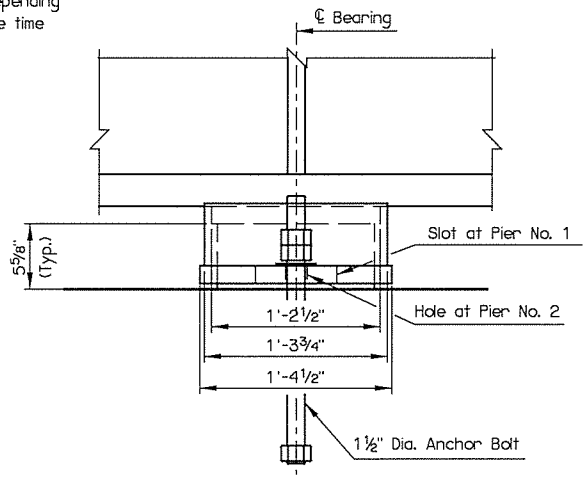


PLAN VIEW  
FIXED BEARING AT PIER NO. 2

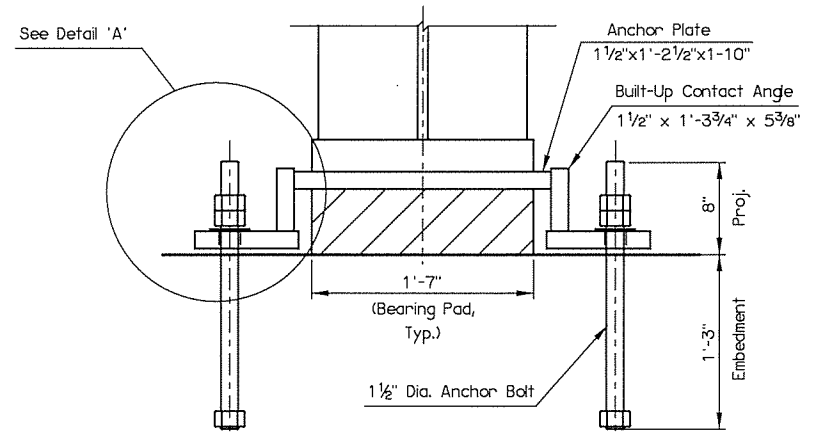
NOTE: Center Anchor Bolts in Slots during setting of beams. Dimension may vary depending on temperature at the time of beam setting.



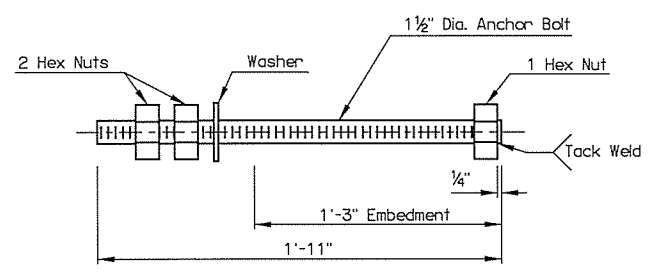
SIDE VIEW  
EXPANSION BEARING AT ABUT. NO. 1 & 2



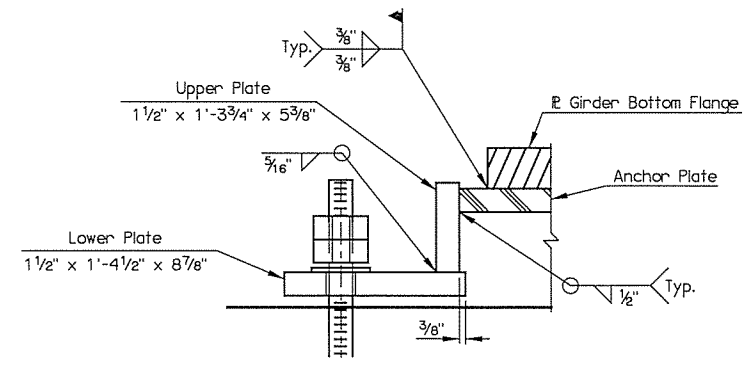
SIDE VIEW  
CONT. BEAM PIERS 1 AND 2



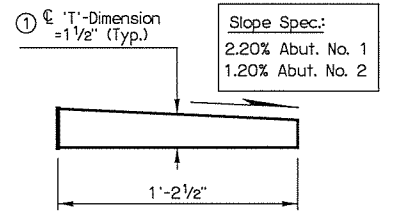
END VIEW  
(TYP.)



ANCHOR BOLT DETAIL



DETAIL 'A'



NOTES: 1. Paint thickest edge red.  
2. Orient thickest edge of plates towards piers.

BEVELED ANCHOR PLATE DETAIL

BEARING SCHEDULE FOR ASSEMBLIES					
LOCATION	ANCHOR PLATE Size (T x L x W)	60 DUROMETER ELASTOMERIC PAD			
		Size (T x L x W)	Cover Layer	Inner Layer	Laminate Plate
① All	1 1/2" x 1'-2 1/2" x 1-10"	5 3/8" x 1'-1 1/2" x 1'-7"	2 - 0.25"	10 - 0.375"	11 - 0.125"

① 'T' = Thickness of Beveled Anchor Plate @  $\epsilon$  of Plate

**BEARING ASSEMBLY NOTES:**  
Provide structural steel for Anchor Plates and Built-Up Contact Angles in accordance with ASTM-A240 (Austenitic Stainless Steel, Type 316, Charpy V-Notch testing not required). For Anchor Bolts, provide continuously threaded bars in accordance with ASTM-A320, Class 2, Grade 8.8 (Austenitic Stainless Steel, Type 316, Charpy V-Notch testing not required). Use austenitic stainless steel nuts and washers conforming to ASTM-A194, Grade 8M and ASTM-A320, respectively. Perform all welding consistent with procedures for stainless steel.

US 75A OVER BNSF RR BRIDGE 'A'	CREEK COUNTY	Design	KAB	10/15
DETAILS OF BEARING ASSEMBLIES		Detail	RWM	10/15
		Check	KMS	12/15
STATE OF OKLAHOMA		DEPARTMENT OF TRANSPORTATION		SHEET NO. 60