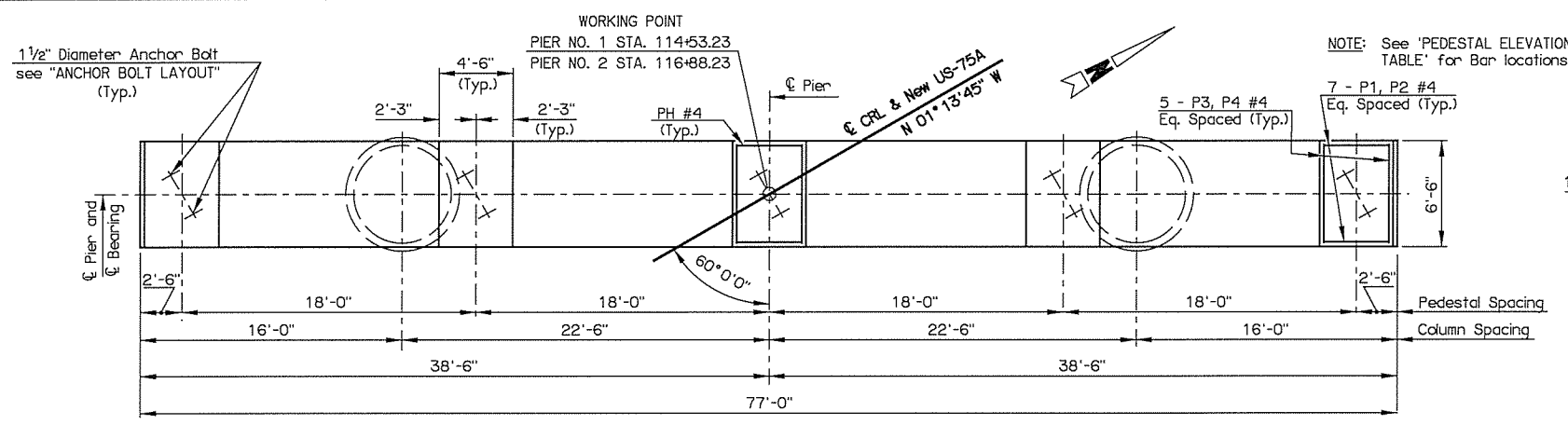
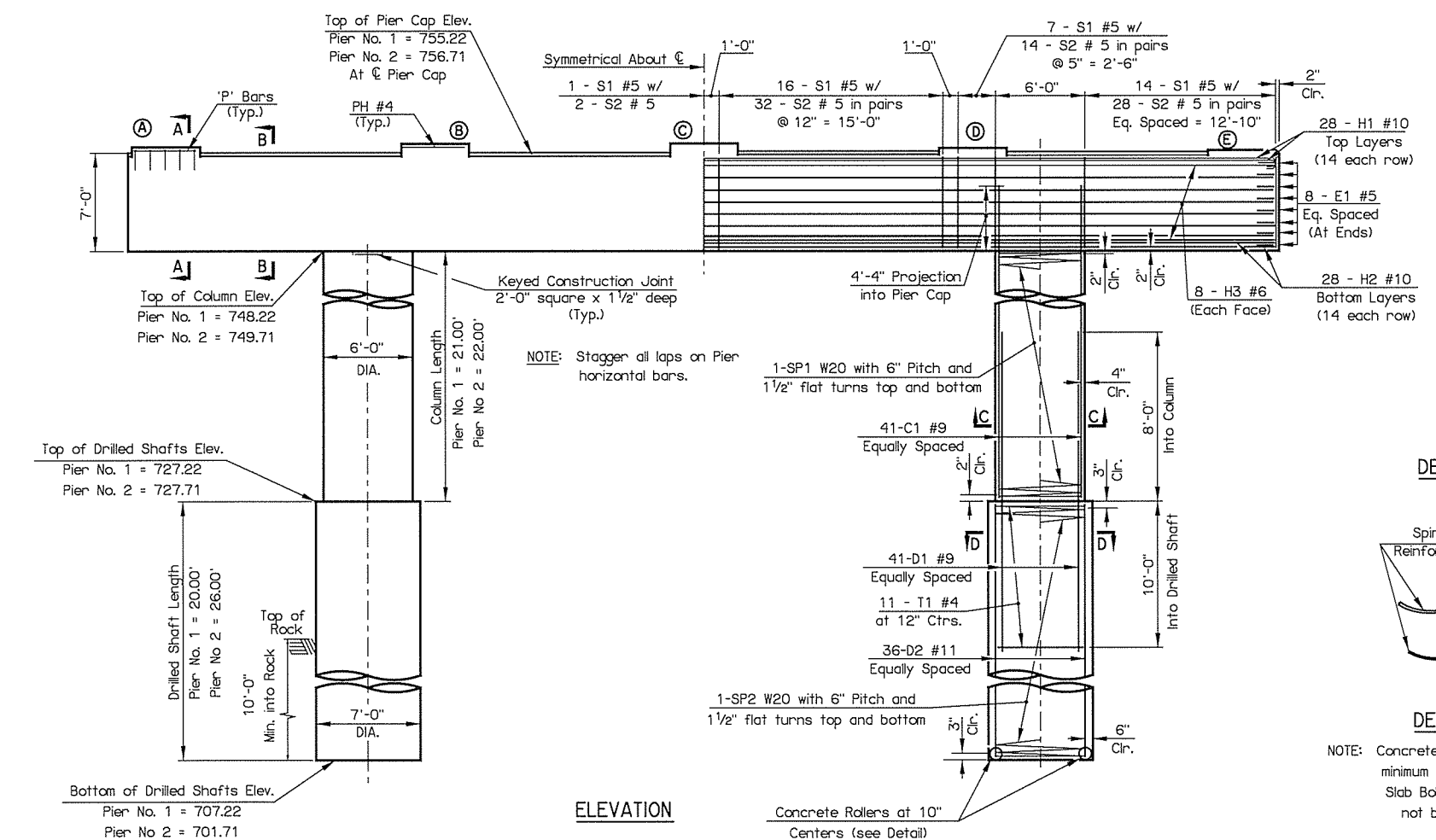


REV. NO.	DESCRIPTION	REVISIONS	DATE

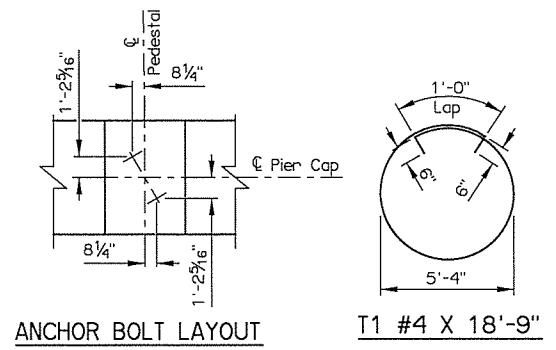


NOTE: All edges of pier cap shall have a 1/2" chamfer except for pedestal edges which shall have a 1/2" chamfer.



ELEVATION

PEDESTAL ELEVATION TABLE										
PEDESTAL	PIER NO. 1					PIER NO. 2				
	(A)	(B)	(C)	(D)	(E)	(A)	(B)	(C)	(D)	(E)
PED. ELEV.	755.38	755.83	756.26	756.31	756.34	757.20	757.33	757.44	757.17	756.87
'P' BARS REQUIRED	P1, P3	P2, P4	P2, P4	P2, P4	P2, P4	P2, P4	P2, P4	P2, P4	P1, P3	P1, P3
'PH' BARS REQUIRED	N/A	1	2	2	2	1	1	1	N/A	N/A



QUANTITIES				
ITEM	UNIT	PIER NO. 1	PIER NO. 2	TOTAL
Class 'A' Concrete	C.Y.	178.20	178.50	356.70
Reinforcing Steel (Non-Epoxy Coated)	LB.	1,010.00	1,060.00	2,070.00
Reinforcing Steel (Epoxy Coated)	LB.	35,470.00	35,680.00	71,150.00
Water Repellent (Visually Inspected)	S.Y.	196.00	192.00	388.00
Drilled Shaft (84" Dia.)	L.F.	40.00	52.00	92.00
Crosshole Sonic Logging	EA.	1.00	0.00	1.00

PIER NO. 1 BAR LIST (EPOXY COATED)					PIER NO. 2 BAR LIST (EPOXY COATED)				
MARK	NO.	SIZE	FORM	LENGTH	MARK	NO.	SIZE	FORM	LENGTH
C1	82	#9	STR.	25'-1"	C1	82	#9	STR.	26'-1"
E1	16	#5	BNT.	8'-2"	E1	16	#5	BNT.	8'-2"
H1	28	#10	BNT.	89'-6"	H1	28	#10	BNT.	89'-6"
H2	28	#10	STR.	86'-8"	H2	28	#10	STR.	86'-8"
H3	16	#6	STR.	80'-8"	H3	16	#6	STR.	80'-8"
P1	7	#4	BNT.	7'-2"	P1	14	#4	BNT.	7'-2"
P2	28	#4	BNT.	8'-2"	P2	21	#4	BNT.	8'-2"
P3	5	#4	BNT.	9'-2"	P3	10	#4	BNT.	9'-2"
P4	20	#4	BNT.	10'-2"	P4	15	#4	BNT.	10'-2"
PH	7	#4	BNT.	21'-5"	PH	3	#4	BNT.	21'-5"
S1	74	#5	BNT.	26'-7"	S1	74	#5	BNT.	26'-7"
S2	148	#5	BNT.	17'-3"	S2	148	#5	BNT.	17'-3"
(NON-EPOXY COATED)					(NON-EPOXY COATED)				
SP1	2	W-20	SPIRAL	743'-1"	SP1	2	W-20	SPIRAL	776'-7"
DRILLED SHAFT BAR LIST (NON-EPOXY COATED)					DRILLED SHAFT BAR LIST (NON-EPOXY COATED)				
MARK	NO.	SIZE	FORM	LENGTH	MARK	NO.	SIZE	FORM	LENGTH
D1	82	#11	STR.	18'-0"	D1	82	#11	STR.	18'-0"
D2	72	#11	STR.	19'-6"	D2	72	#11	STR.	25'-6"
SP2	2	W-20	SPIRAL	791'-11"	SP2	2	W-20	SPIRAL	1,018'-2"
T1	22	#4	BNT.	18'-9"	T1	22	#4	BNT.	18'-9"

① Includes 1 - 10'-0" lap
② Includes 1 - 4'-0" lap
③ Included in price bid per linear foot of Drilled Shaft.

US 75A OVER BNSF RR
BRIDGE 'A'

CREEK COUNTY

Design: KAB 11/15
Detail: RWM 02/16
Check: KMS 02/16
Squad: MAYFIELD
Engr: ELYAZGI

STATE OF OKLAHOMA DEPARTMENT OF TRANSPORTATION
JOB PRICE NO. 27075(04) SHEET NO. 59

DETAILS OF PIERS