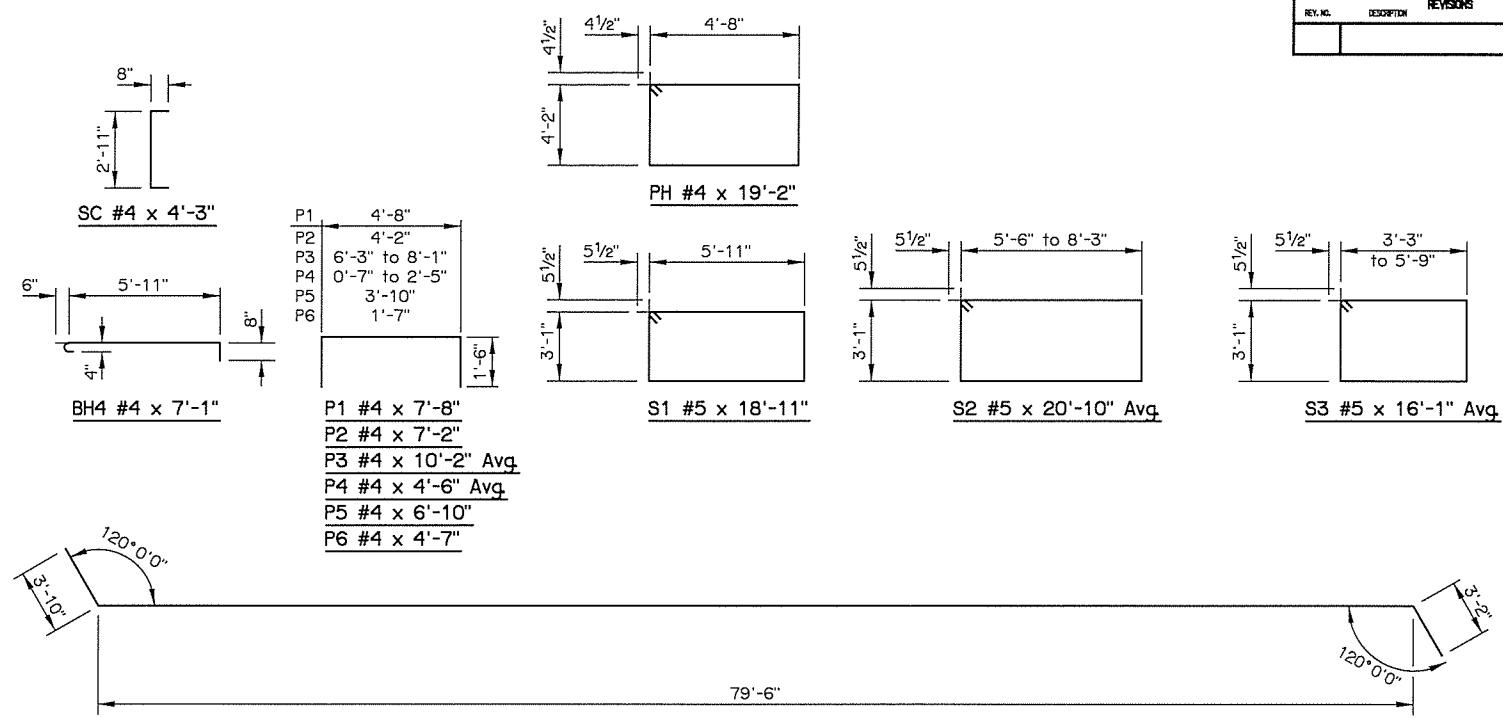


REV. NO.	DESCRIPTION	REVISIONS	DATE

BAR LIST - ABUTMENT NO. 1

MARK	NO.	SIZE	FORM	LENGTH	VARIANCE	MARK	NO.	SIZE	FORM	LENGTH	VARIANCE
BH1	18	#4	BNT.	88'-4"		WT1	2	#6	BNT.	11'-6"	
BH2	14	#9	STR.	86'-4" Avg.	84'-1" to 88'-7"	WT2	6	#6	BNT.	9'-4" Avg.	6'-2" to 12'-6"
BH3	2	#9	STR.	3'-2" Avg.	2'-0" to 4'-4"	WT3	14	#6	BNT.	23'-0"	
BH4	69	#4	BNT.	7'-1"		WT4	34	#6	BNT.	13'-0"	
BV1	41	#4	STR.	12'-6 1/2" Avg.	12'-3" to 12'-10"	WH1	32	#6	STR.	33'-5"	
BV2	41	#5	STR.	12'-6 1/2" Avg.	12'-3" to 12'-10"	WH2	32	#6	STR.	17'-4 1/2" Avg.	5'-8" to 29'-1"
BV3	41	#4	STR.	12'-7 1/2" Avg.	12'-5" to 12'-10"	WH3	2	#6	BNT.	34'-11"	
BV4	41	#5	STR.	12'-7 1/2" Avg.	12'-5" to 12'-10"	WH4	32	#6	STR.	17'-10 1/2" Avg.	6'-0" to 29'-9"
BV5	4	#4	STR.	13'-5"		WH7	2	#6	STR.	34'-10"	
BV6	4	#4	STR.	13'-9"		WV1	16	#4	STR.	3'-8"	
P1	20	#4	BNT.	7'-8"		WV2	62	#4	STR.	8'-10" Avg.	3'-11" to 13'-9"
P2	32	#4	BNT.	7'-2"		WV3	62	#4	STR.	8'-9 1/2" Avg.	3'-9" to 13'-10"
P3	5	#4	BNT.	10'-2" Avg.	9'-3" to 11'-1"	WP1	10	#4	BNT.	8'-8"	
P4	2	#4	BNT.	4'-6" Avg.	3'-7" to 5'-5"	WP2	8	#4	STR.	1'-7"	
P5	1	#4	BNT.	6'-10"		WP3	8	#4	STR.	1'-6" Avg.	1'-1" to 1'-11"
P6	1	#4	BNT.	4'-7"							
PH	1	#4	BNT.	19'-2"							
S1	72	#5	BNT.	18'-11"							
S2	8	#5	BNT.	20'-11" Avg.	18'-1" to 23'-9"						
S3	4	#5	BNT.	16'-1" Avg.	13'-7" to 18'-7"						
SC	8	#4	BNT.	4'-3"							

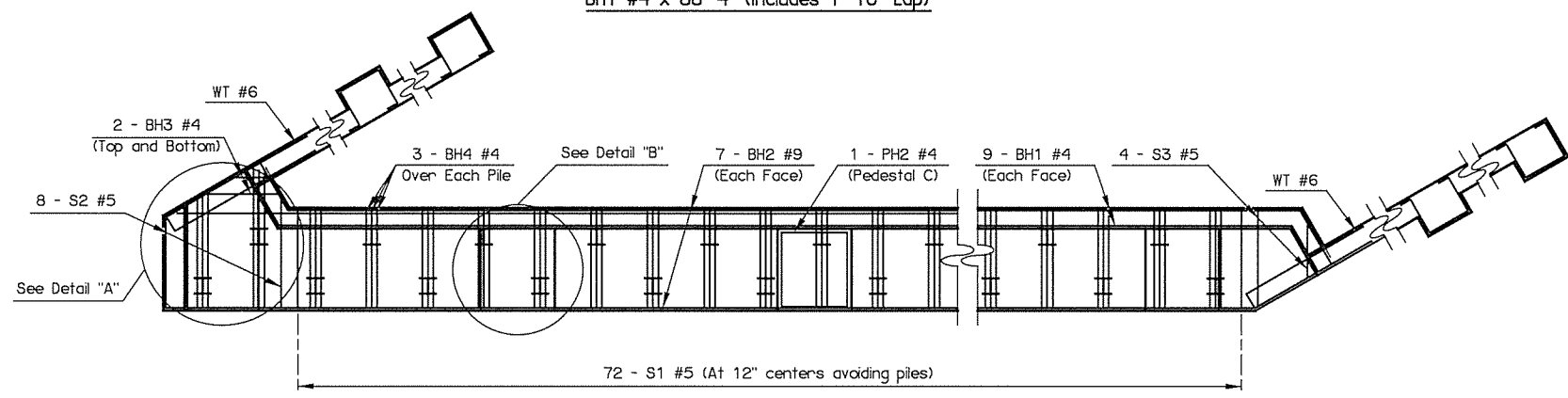
① LENGTH INCLUDES 1'-10" LAP (STAGGER LAPS)
 ② LENGTH INCLUDES 4'-4" LAP (STAGGER LAPS)
 ③ 2 SETS OF 7
 ④ 2 SETS OF 16
 ⑤ 2 SETS OF 31
 ⑥ 2 SETS OF 4



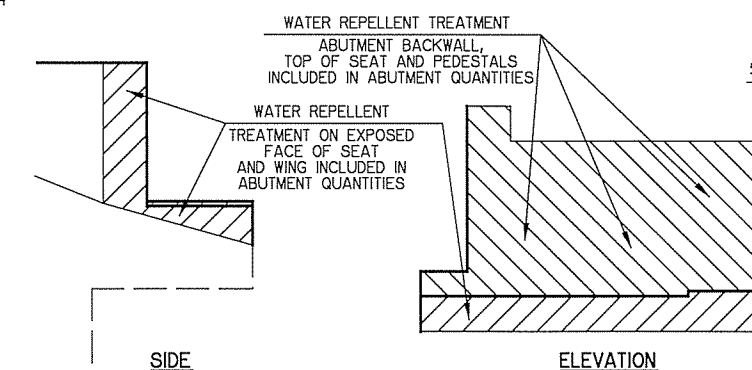
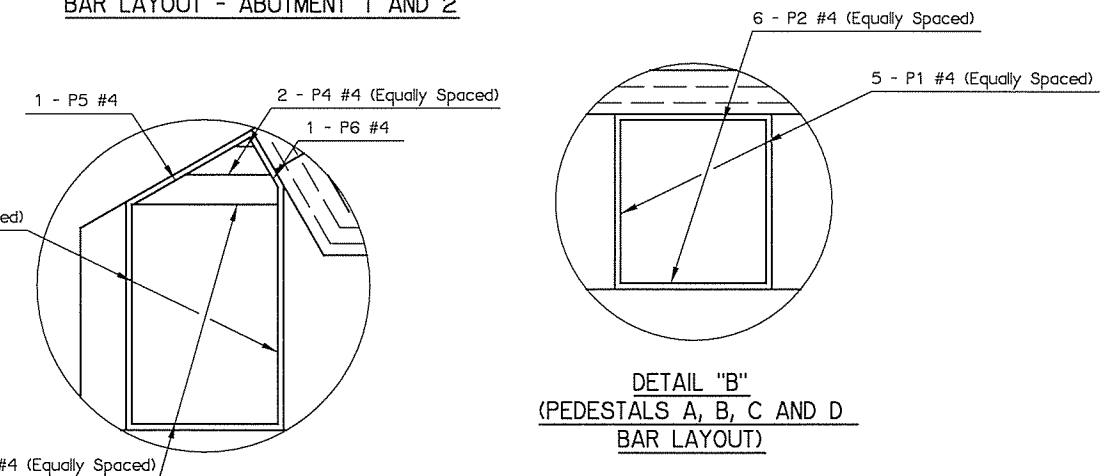
BAR LIST - ABUTMENT NO. 2

MARK	NO.	SIZE	FORM	LENGTH	VARIANCE	MARK	NO.	SIZE	FORM	LENGTH	VARIANCE
BH1	18	#4	BNT.	88'-4"		WT1	2	#6	BNT.	11'-6"	
BH2	14	#9	STR.	86'-4" Avg.	84'-1" to 88'-7"	WT3	14	#6	BNT.	23'-0"	
BH3	2	#9	STR.	3'-2" Avg.	2'-0" to 4'-4"	WT4	34	#6	BNT.	13'-0"	
BH4	69	#4	BNT.	7'-1"		WT5	6	#6	BNT.	9'-4" Avg.	6'-2" to 12'-6"
BV7	41	#4	STR.	12'-6" Avg.	12'-5" to 12'-7"	WH1	32	#6	STR.	33'-5"	
BV8	41	#5	STR.	12'-6" Avg.	12'-5" to 12'-7"	WH5	32	#6	STR.	17'-11" Avg.	6'-0" to 29'-10"
BV9	41	#4	STR.	12'-7"		WH6	32	#6	STR.	17'-7" Avg.	5'-9" to 29'-5"
BV10	41	#5	STR.	12'-7"		WH8	2	#6	STR.	34'-10"	
BV11	4	#4	STR.	13'-6"		WH9	2	#6	STR.	34'-10"	
BV12	4	#4	STR.	13'-8"		WV1	16	#4	STR.	3'-8"	
P1	20	#4	BNT.	7'-8"		WV4	62	#4	STR.	8'-8" Avg.	3'-10" to 13'-6"
P2	32	#4	BNT.	7'-2"		WV5	62	#4	STR.	8'-10" Avg.	3'-11" to 13'-9"
P3	5	#4	BNT.	10'-2" Avg.	9'-3" to 11'-1"	WP1	10	#4	BNT.	8'-8"	
P4	2	#4	BNT.	4'-6" Avg.	3'-7" to 5'-5"	WP2	8	#4	STR.	1'-7"	
P5	1	#4	BNT.	6'-10"		WP3	8	#4	STR.	1'-6" Avg.	1'-1" to 1'-11"
P6	1	#4	BNT.	4'-7"							
PH	1	#4	BNT.	19'-2"							
S1	72	#5	BNT.	18'-11"							
S2	8	#5	BNT.	20'-11" Avg.	18'-1" to 23'-9"						
S3	4	#5	BNT.	16'-1" Avg.	13'-7" to 18'-7"						
SC	8	#4	BNT.	4'-3"							

① LENGTH INCLUDES 1'-10" LAP (STAGGER LAPS)
 ② LENGTH INCLUDES 4'-4" LAP (STAGGER LAPS)
 ③ 2 SETS OF 7
 ④ 2 SETS OF 16
 ⑤ 2 SETS OF 31
 ⑥ 2 SETS OF 4



BAR LAYOUT - ABUTMENT 1 AND 2



WATER REPELLENT TREATMENT DETAILS

QUANTITIES - BOTH ABUTMENTS				
ITEM	UNIT	ABUT. NO. 1	ABUT. NO. 2	
SUBSTRUCTURE EXCAVATION COMMON	C.Y.	490.00	490.00	
CLSM BACKFILL	C.Y.	393.50	393.50	
CLASS A CONCRETE	C.Y.	135.20	133.40	
EPOXY COATED REINFORCING STEEL	LB.	14,300.00	14,980.00	
PILES, FURNISHED (HP10x42)	L.F.	157.00	211.00	
PILES, FURNISHED (HP12x53)	L.F.	805.00	1,139.00	
PILES, DRIVEN (HP10x42)	L.F.	157.00	211.00	
PILES, DRIVEN (HP12x53)	L.F.	805.00	1,139.00	
WATER REPELLENT (VISUALLY INSPECTED)	S.Y.	125.00	123.00	
6" PERFORATED PIPE UNDERDRAIN ROUND	L.F.	79.00	78.00	
6" NON-PERF. PIPE UNDERDRAIN RND.	L.F.	20.00	20.00	

US 75A OVER BNSF RR BRIDGE 'A' CREEK COUNTY

Design: KAB 12/15
 Detail: RLA 2/16
 Check: KMS 3/16
 Squared: MAYFIELD
 Engr: ELYAZGI

STATE OF OKLAHOMA DEPARTMENT OF TRANSPORTATION
 JOB PECE NO. 27075(04) SHEET NO. 56