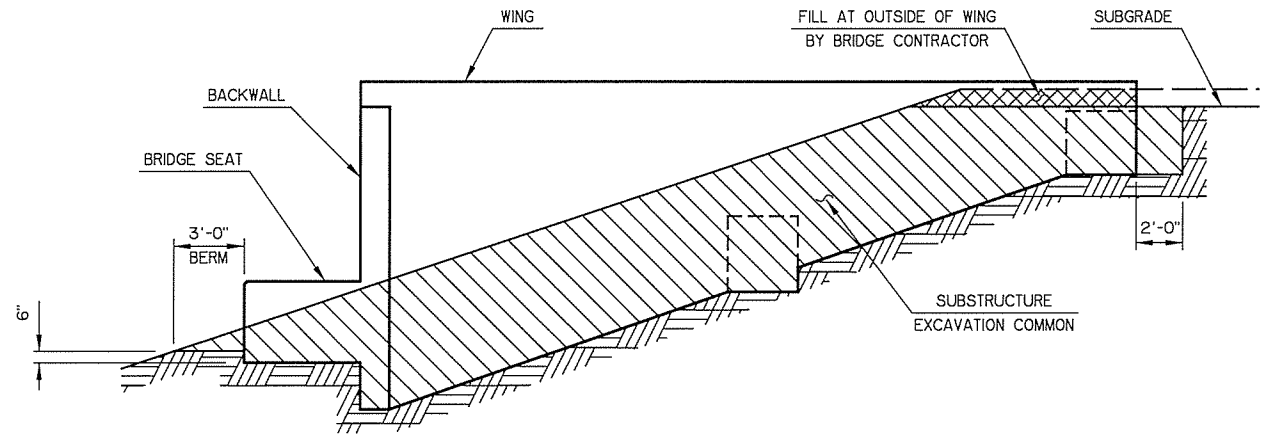
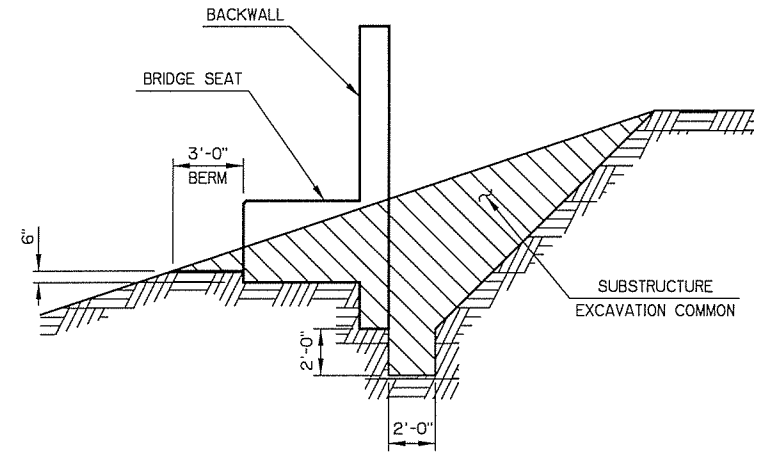


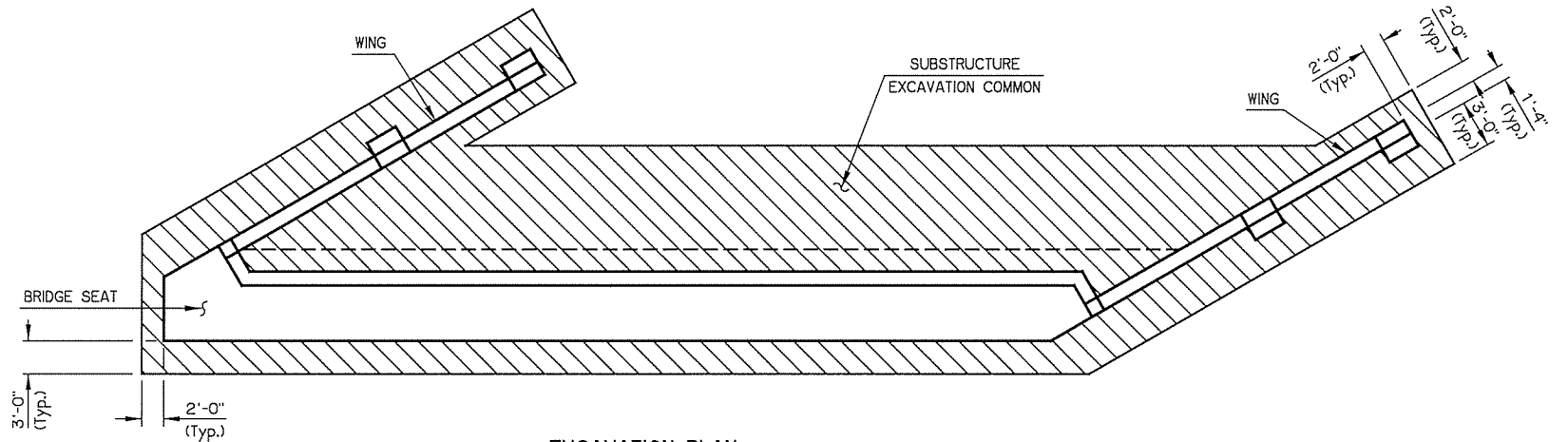
REV. NO.	DESCRIPTION	REVISIONS	DATE



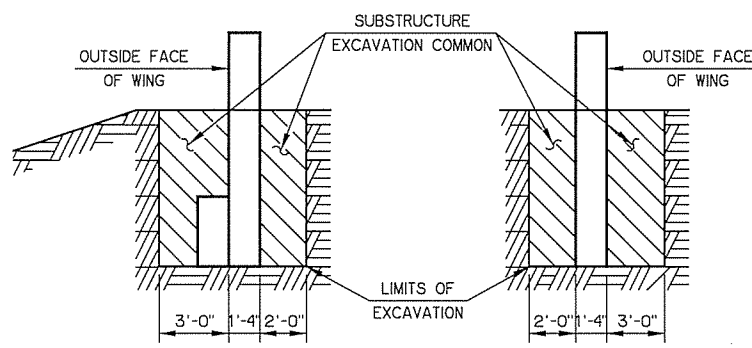
DETAIL OF GRADING AT WINGS



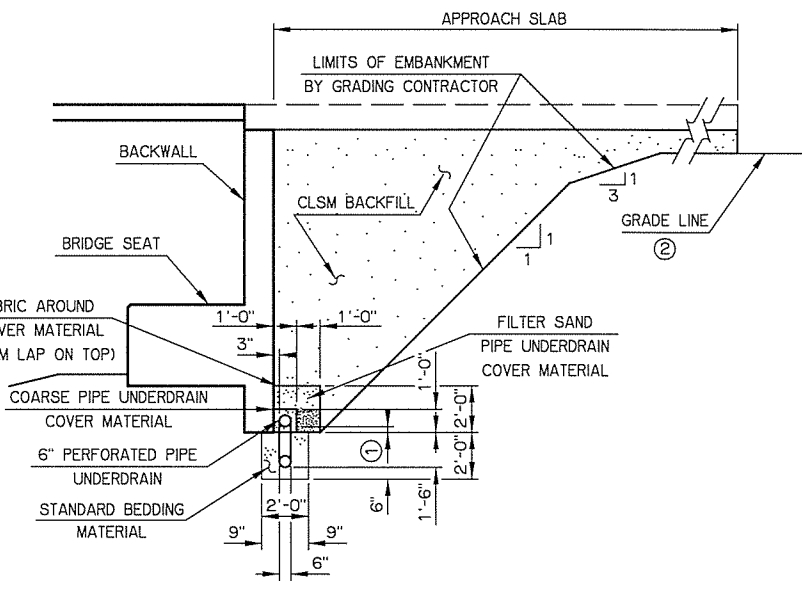
SECTION THRU BRIDGE SEAT



EXCAVATION PLAN

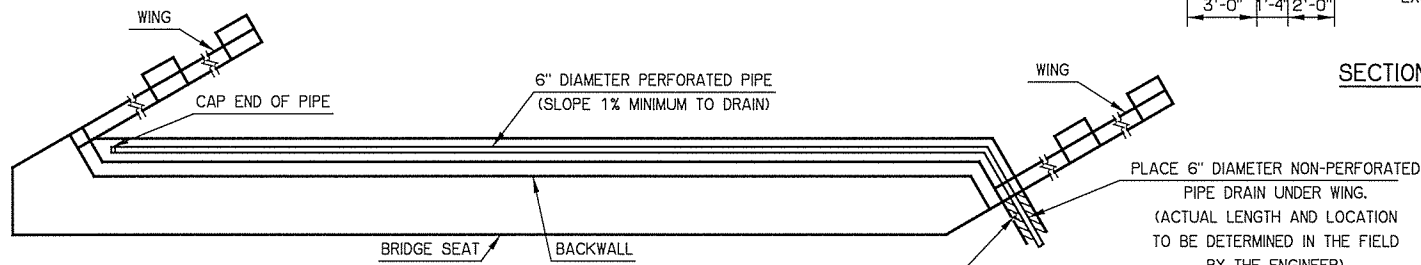


SECTIONS THRU WING

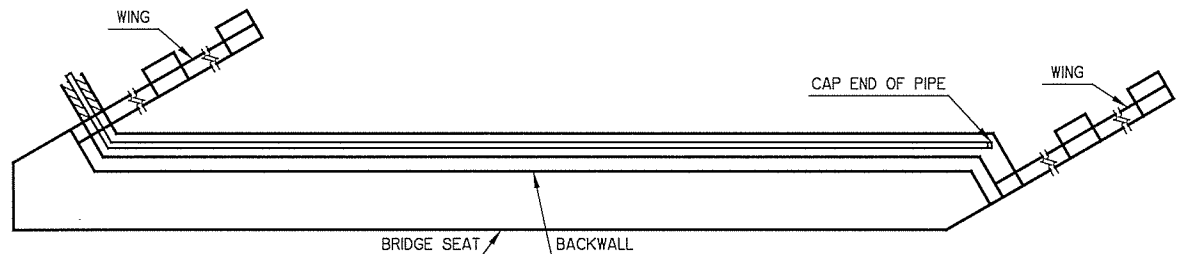


DETAIL OF UNDERDRAIN INSTALLATION

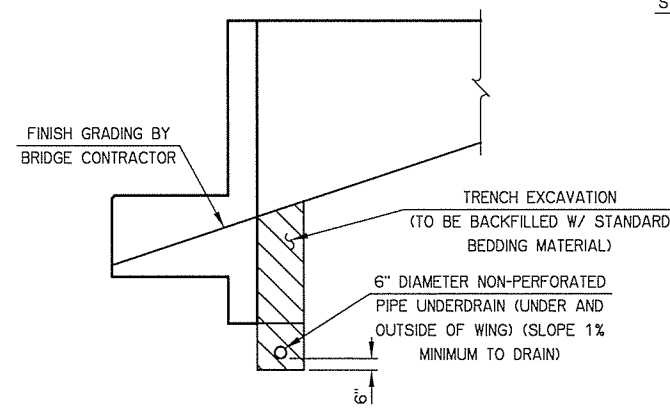
- ① Set bottom of pipe 3" above the bottom of the abutment at the low end.
- ② Grade Line assumed to be located 12" below bottom of Approach Slab for computing CLSM Backfill quantity shown on plans. The Department will pay for CLSM Backfill in accordance with the plan quantity and no adjustment will be made for actual location of grade line.



PLAN OF PIPE UNDERDRAIN INSTALLATION AT ABUTMENT NO. 1



PLAN OF PIPE UNDERDRAIN INSTALLATION AT ABUTMENT NO. 2



DETAIL OF TRENCH EXCAVATION

NOTE:
The Contractor may place concrete against the limits of excavation if the material is excavated to the neat lines of the abutment and approved by the Engineer. If necessary, use forms on the back vertical face of the abutment and remove forms after concrete hardens. If the Contractor chooses to place concrete against the soil, the Department will pay for SUBSTRUCTURE EXCAVATION COMMON in accordance with the diagram shown on the plans.

US 75A OVER BNSF RR BRIDGE 'A'	CREEK COUNTY	Design	N/A	N/A
SUBSTRUCTURE EXCAVATION AND PIPE UNDERDRAIN ASSEMBLY DETAILS		Detail	RLA	2/16
		Check	KMS	3/16
STATE OF OKLAHOMA		Squad	MAYFIELD	
DEPARTMENT OF TRANSPORTATION		Engr.	ELYAZGI	
JOB PCEC NO. 27075(04)		SHEET NO.	53	