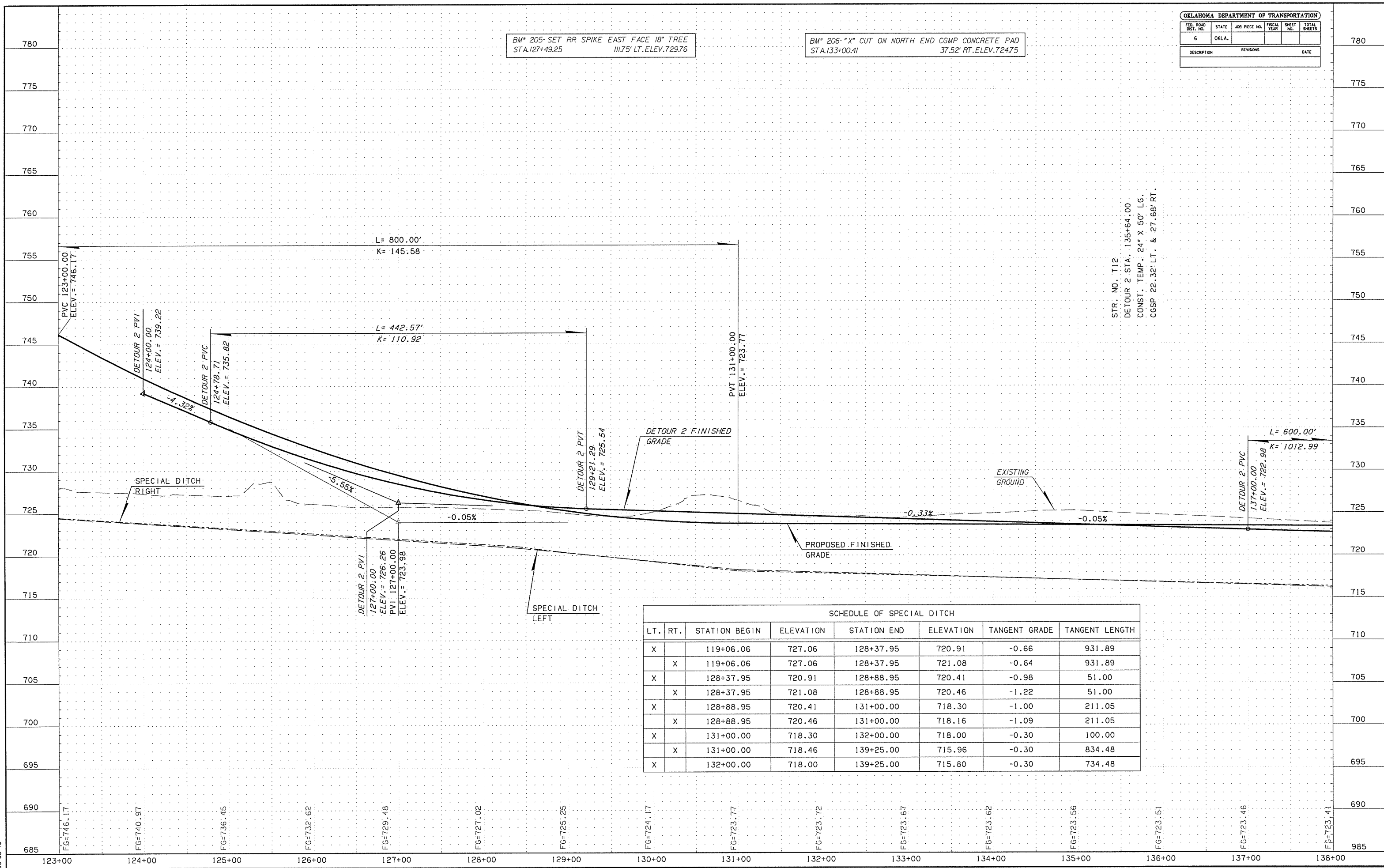


BM* 205- SET RR SPIKE EAST FACE 18" TREE
STA.127+49.25 111.75' LT. ELEV.729.76

BM* 206- "X" CUT ON NORTH END CGMP CONCRETE PAD
STA.133+00.41 37.52' RT. ELEV.724.75



SCHEDULE OF SPECIAL DITCH							
LT.	RT.	STATION BEGIN	ELEVATION	STATION END	ELEVATION	TANGENT GRADE	TANGENT LENGTH
X		119+06.06	727.06	128+37.95	720.91	-0.66	931.89
	X	119+06.06	727.06	128+37.95	721.08	-0.64	931.89
X		128+37.95	720.91	128+88.95	720.41	-0.98	51.00
	X	128+37.95	721.08	128+88.95	720.46	-1.22	51.00
X		128+88.95	720.41	131+00.00	718.30	-1.00	211.05
	X	128+88.95	720.46	131+00.00	718.16	-1.09	211.05
X		131+00.00	718.30	132+00.00	718.00	-0.30	100.00
	X	131+00.00	718.46	139+25.00	715.96	-0.30	834.48
X		132+00.00	718.00	139+25.00	715.80	-0.30	734.48