

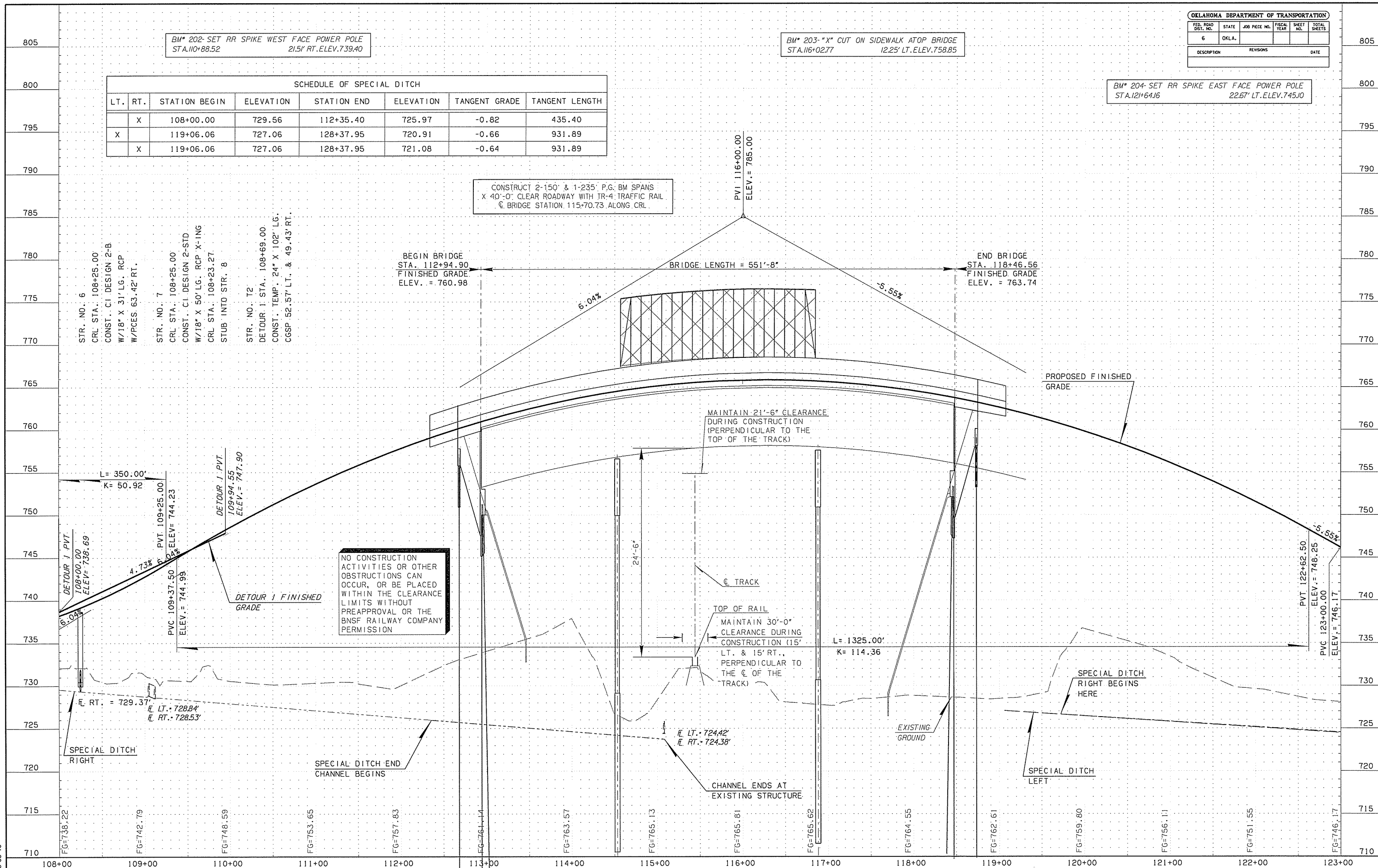
BM* 202-SET RR SPIKE WEST FACE POWER POLE
 STA.110+88.52 21.5' RT. ELEV.739.40

BM* 203-"X" CUT ON SIDEWALK ATOP BRIDGE
 STA.116+02.77 12.25' LT. ELEV.758.85

BM* 204-SET RR SPIKE EAST FACE POWER POLE
 STA.122+64.16 22.67' LT. ELEV.745.10

SCHEDULE OF SPECIAL DITCH							
LT.	RT.	STATION BEGIN	ELEVATION	STATION END	ELEVATION	TANGENT GRADE	TANGENT LENGTH
	X	108+00.00	729.56	112+35.40	725.97	-0.82	435.40
X		119+06.06	727.06	128+37.95	720.91	-0.66	931.89
	X	119+06.06	727.06	128+37.95	721.08	-0.64	931.89

CONSTRUCT 2-150' & 1-235' P.G. BM SPANS
 X 40'-0" CLEAR ROADWAY WITH TR-4 TRAFFIC RAIL
 C BRIDGE STATION 115+70.73 ALONG CRL



NO CONSTRUCTION
 ACTIVITIES OR OTHER
 OBSTRUCTIONS CAN
 OCCUR, OR BE PLACED
 WITHIN THE CLEARANCE
 LIMITS WITHOUT
 PREAPPROVAL OR THE
 BNSF RAILWAY COMPANY
 PERMISSION

05-03-16