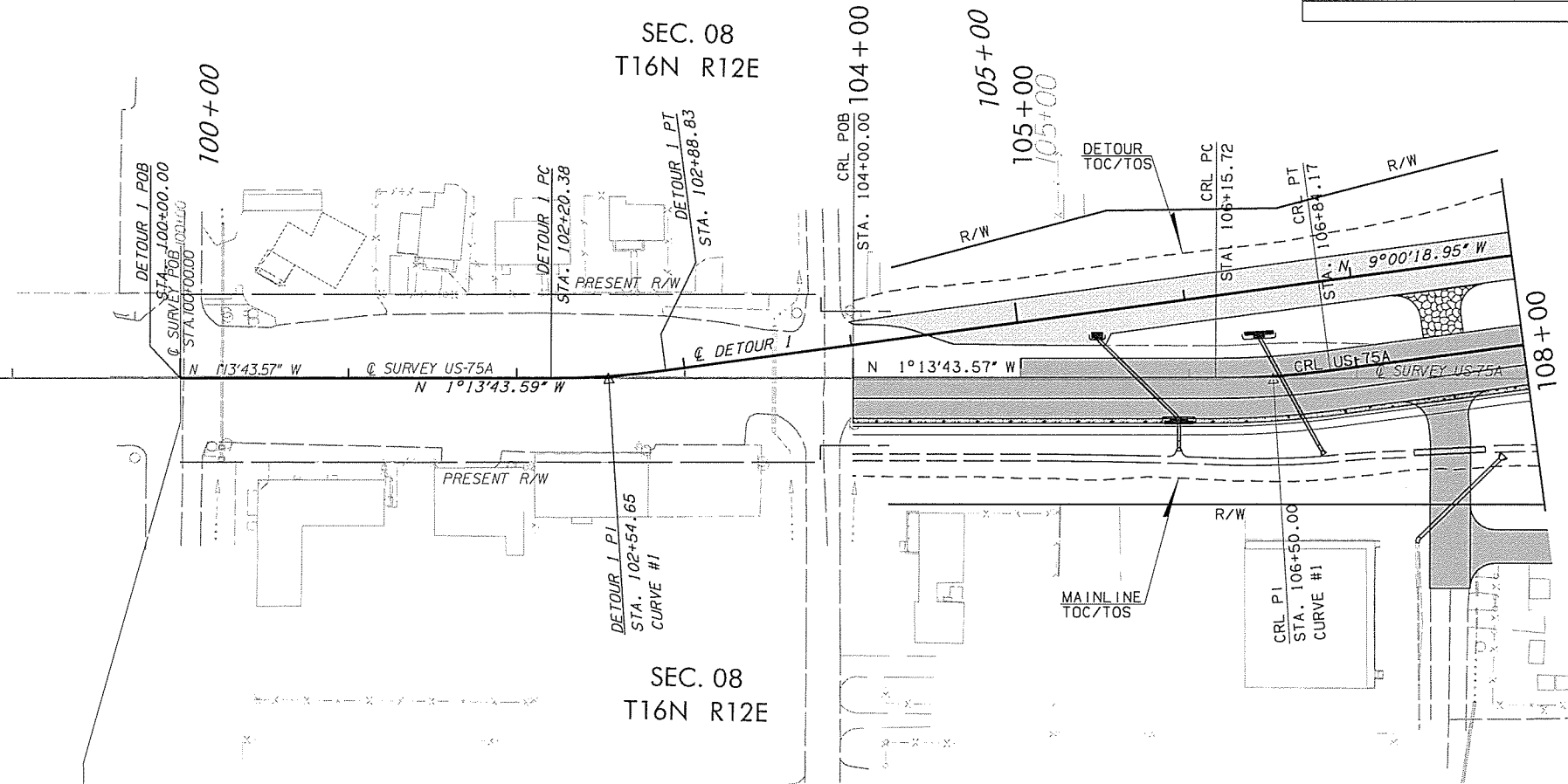


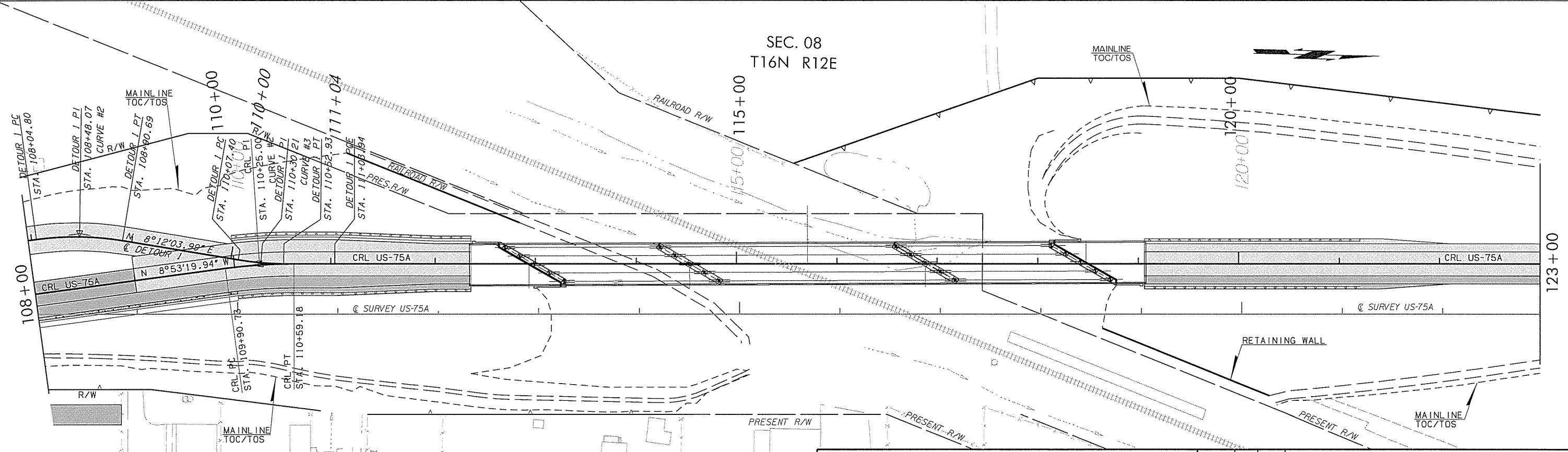
OKLAHOMA DEPARTMENT OF TRANSPORTATION						
FED. ROAD DIST. NO.	STATE	JOB PECE NO.	FISCAL YEAR	SHEET NO.	TOTAL SHEETS	
6	OKLA.					
DESCRIPTION		REVISIONS		DATE		

- PHASE III
- REMOVE EXISTING US-75A FROM CRL STA. 104+00.00 TO CRL STA. 139+34.48.  
- REMOVE RT. DRIVING LAND & SHOULDER ONLY FROM CRL STA. 104+00.00 TO CRL STA. 105+00.00.
  - CONSTRUCT MAINLINE US-75A FROM CRL STA. 104+00.00 TO CRL STA. 109+00.00.  
- CONSTRUCT RT. DRIVING LANE & RT. SHOULDER ONLY FROM CRL STA. 104+00.00 TO CRL STA. 105+00.00.  
- CONSTRUCT LT. & RT. DRIVING LANES AND RT. SHOULDER FROM CRL STA. 105+00.00 TO CRL STA. 109+00.00.  
- TEMPORARY 1:3 FILL OR CUT FROM LT. EDGE OF DRIVING LANE.
  - CONSTRUCT RT. SHOULDER AND FINISH SLOPE FROM CRL STA. 109+00.00 TO CRL STA. 112+35.40.
  - BUILD RETAINING WALL FROM CRL STA. 118+63.89 TO CRL STA. 120+29.85 RT.
  - CONSTRUCT MAINLINE US-75A FROM CRL STA. 119+06.06 TO CRL STA. 139+34.48.  
-CONSTRUCT RT. SHOULDER AND FINISH SLOPE FROM CRL STA. 119+06.06 TO CRL STA. 128+60.00.  
-CONSTRUCT LT. & RT. DRIVING LANES AND RT. SHOULDER FROM CRL STA. 128+60.00 TO CRL STA. 139+34.48.  
- TEMPORARY 1:3 FILL OR CUT FROM LT. EDGE OF DRIVING LANE.
  - SHIFT TRAFFIC FROM DETOUR 1 TO NEWLY CONSTRUCTED RT. SIDE OF US-75A FROM CRL STA. 104+00.00 TO CRL STA. 105+00.00. FROM CRL STA. 105+00.00 ONWARD SHIFT TRAFFIC TO ALL LANES. SHIFT TRAFFIC FROM DETOUR 2 TO NEWLY CONSTRUCTED US-75A.



PREVIOUS PHASE  
 NEW CONSTRUCTION

Y:\Division 8\UP27075 (04) Creek\IGN\PROJECT DGN\27075 (04) Phase 3 Detail Sheet 1.dgn  
 05-03-16



PREVIOUS PHASE  
 NEW CONSTRUCTION

FOR PHASING INFORMATION SEE THIS SHEET.

DESIGN	SCM
DRAWN	SCM
CHECKED	
APPROVED	
SQUAD	HAMILTON

OKLAHOMA DEPARTMENT OF TRANSPORTATION ROADWAY DESIGN DIVISION	
PHASE 3 DETAIL SHEET 1	
STATE JOB NO. 27075(04)	SHEET NO. 29
CREEK COUNTY	US-75A