

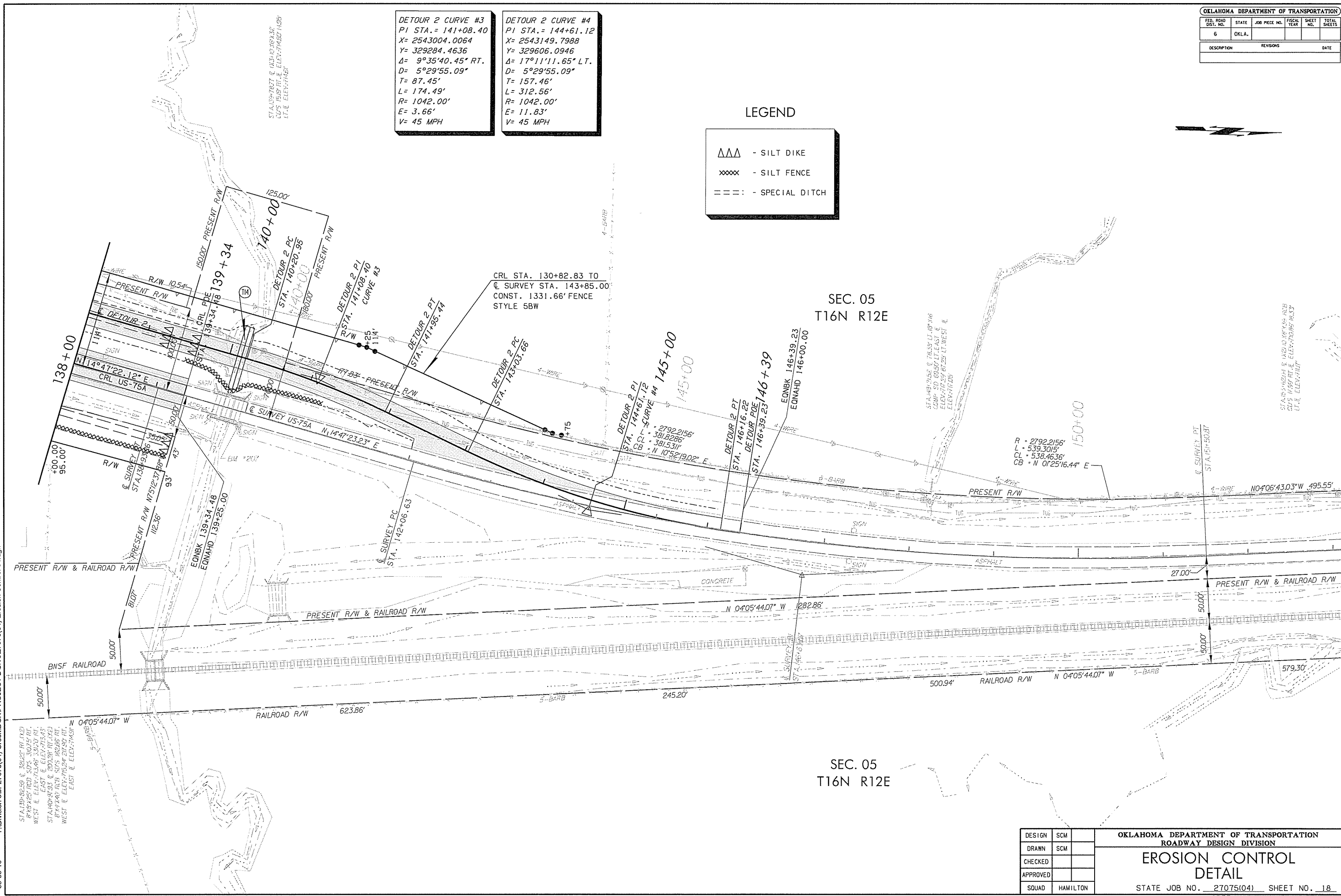
| OKLAHOMA DEPARTMENT OF TRANSPORTATION | | | | | |
|---------------------------------------|-------|---------------|-------------|-----------|--------------|
| FED. ROAD DIST. NO. | STATE | JOB PIECE NO. | FISCAL YEAR | SHEET NO. | TOTAL SHEETS |
| 6 | OKLA. | | | | |
| DESCRIPTION | | REVISIONS | | DATE | |

DETOUR 2 CURVE #3
 PI STA. = 141+08.40
 X = 2543004.0064
 Y = 329284.4636
 $\Delta = 9^{\circ}35'40.45" RT.$
 $D = 5^{\circ}29'55.09"$
 $T = 87.45'$
 $L = 174.49'$
 $R = 1042.00'$
 $E = 3.66'$
 $V = 45 MPH$

DETOUR 2 CURVE #4
 PI STA. = 144+61.12
 X = 2543149.7988
 Y = 329606.0946
 $\Delta = 17^{\circ}11'11.65" LT.$
 $D = 5^{\circ}29'55.09"$
 $T = 157.46'$
 $L = 312.56'$
 $R = 1042.00'$
 $E = 11.83'$
 $V = 45 MPH$

LEGEND

▲▲▲ - SILT DIKE
 ×××× - SILT FENCE
 = = = - SPECIAL DITCH



SEC. 05
T16N R12E

SEC. 05
T16N R12E

Y:\Division 8\UP27075(04) Creek\IGN\PROJECT DGNs\27075(04) Erosion Control 04.dgn

STA. 139+02.59 @ 321.02' RT. (X2)
 R/W 54.25' RCB SDS 30.75' RT.
 WEST @ ELEV. 713.26' 33.70' RT.
 EAST @ ELEV. 715.43'
 STA. 140+01.33 @ 200.28' RT. (X2)
 R/W 54.25' RCB SDS 30.75' RT.
 WEST @ ELEV. 715.24' 27.59' RT.
 EAST @ ELEV. 716.01'

| | |
|----------|----------|
| DESIGN | SCM |
| DRAWN | SCM |
| CHECKED | |
| APPROVED | |
| SQUAD | HAMILTON |

OKLAHOMA DEPARTMENT OF TRANSPORTATION
 ROADWAY DESIGN DIVISION
**EROSION CONTROL
 DETAIL**
 STATE JOB NO. 27075(04) SHEET NO. 18
 CREEK COUNTY US-75A