

1/4 SECTION CORNER - O.D.O.T. C-17-372
 SET #4 REBAR WITH CAP STAMPED CA 2054. THIS CORNER WAS RE-ESTABLISHED BY SINGLE PROPORTION. THERE WAS NO CORNER RECORD ON FILE.

SECTION CORNER - O.D.O.T. C-17-371
 SET #4 REBAR WITH CAP STAMPED CA 2054. THIS CORNER WAS RE-ESTABLISHED USING OLD HIGHWAY PLANS AND FITS WELL WITH GLO DISTANCES. ALSO FOUND #4 REBAR 10.9' NORTH AND 9.4' EAST OF CORNER AS SHOWN ON CORNER RECORD FILED BY ALBERT C. MCDONALD, JR.

SECTION CORNER - O.D.O.T. C-17-373
 FOUND AND ACCEPTED #4 REBAR. THIS CORNER FITS WELL WITH EXISTING IMPROVEMENTS. THERE WAS NO CORNER RECORD ON FILE.

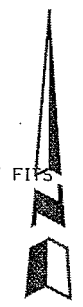
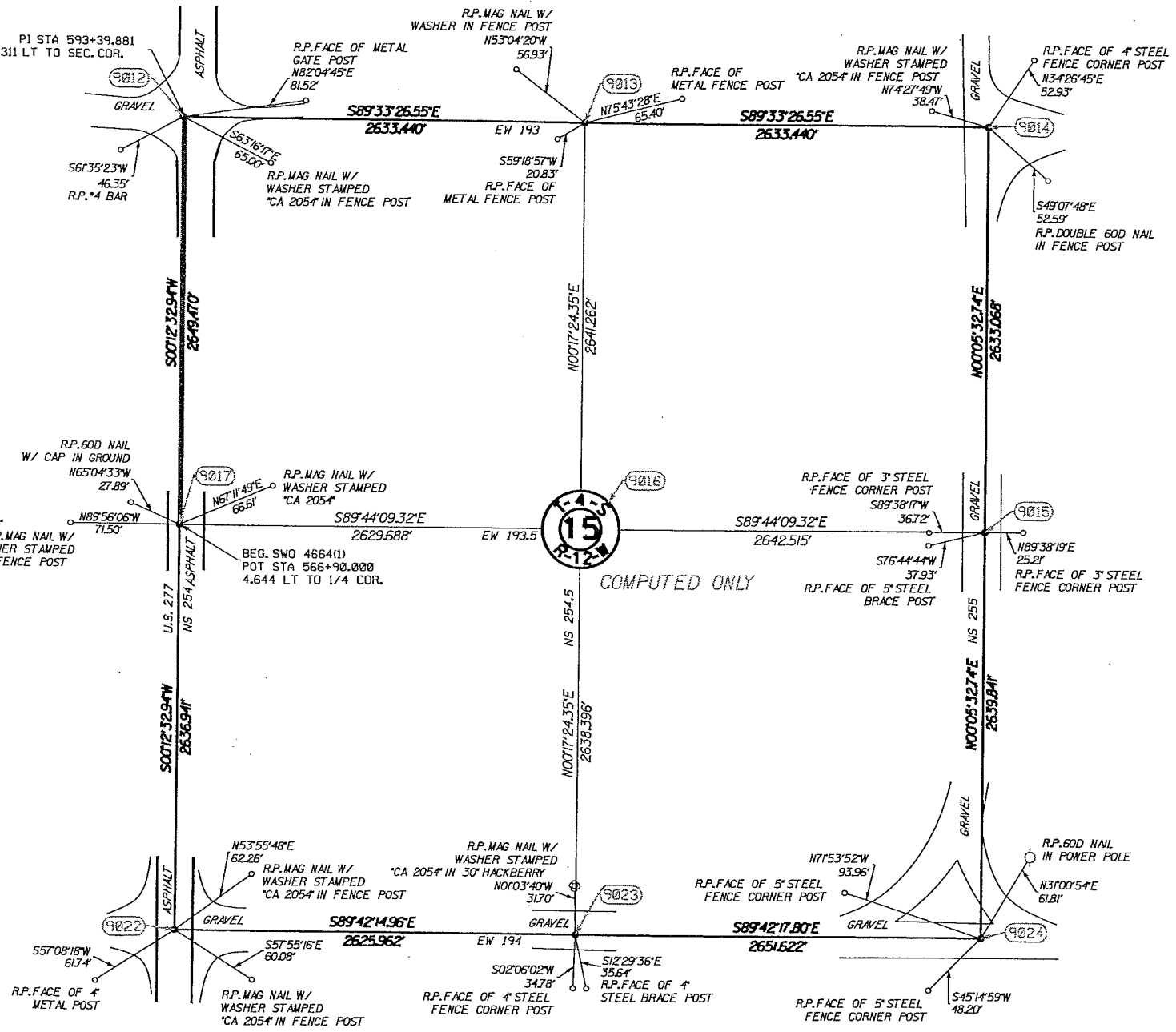
1/4 SECTION CORNER - O.D.O.T. C-17-376
 SET #4 REBAR WITH CAP STAMPED CA 2054. THIS CORNER WAS RE-ESTABLISHED USING OLD HIGHWAY PLANS AND FITS WELL WITH EXISTING IMPROVEMENTS. ALSO FOUND P.K. NAIL 11.7' NORTH AND 4.7' EAST AS SHOWN ON CORNER RECORD FILED BY ALBERT C. MCDONALD, JR.

1/4 SECTION CORNER - O.D.O.T. C-17-377
 SET #4 REBAR WITH CAP STAMPED CA 2054. THIS CORNER WAS RE-ESTABLISHED USING EXISTING IMPROVEMENTS. THERE WAS NO CORNER RECORD ON FILE.

SECTION CORNER - O.D.O.T. C-17-380
 FOUND AND ACCEPTED #4 REBAR AS SHOWN ON CORNER RECORD FILED BY ALBERT C. MCDONALD, JR.

SECTION CORNER - O.D.O.T. C-17-382
 FOUND AND ACCEPTED #3 REBAR. THIS MONUMENT FITS EXISTING IMPROVEMENTS. THERE WAS NO CORNER RECORD ON FILE.

1/4 SECTION CORNER - O.D.O.T. C-17-381
 FOUND AND ACCEPTED 60D NAIL. THIS MONUMENT FITS EXISTING IMPROVEMENTS. THERE WAS NO CORNER RECORD ON FILE.



SCALE:
1" = 500'

(NOTE: REFERENCE'S SHOWN ARE NOT TO SCALE.)

OKLAHOMA DEPARTMENT OF TRANSPORTATION		SURVEY DIVISION	
SURVEY DATA SHEET			
PLS	SS	SWO 4664	PROJECT NO. 28036(04)
DRAWN	SK		SHEET NO. 513
CHECKED	SS		
APPROVED	SS		
CREW	JL, TK		