

1/4 SECTION CORNER - O.D.O.T. C-17-370  
 FOUND AND ACCEPTED #3 REBAR WITH UNREADABLE CAP. THIS MONUMENT FITS WELL WITH EXISTING IMPROVEMENTS. THERE WAS NO CORNER RECORD ON FILE.

SECTION CORNER - O.D.O.T. C-17-369  
 SET #4 REBAR WITH CAP STAMPED CA 2054. THIS CORNER WAS RE-ESTABLISHED USING EXISTING IMPROVEMENTS AND FITS GLO DISTANCES TO SURROUNDING CORNERS. ALSO FOUND #4 REBAR 11.0<sup>5</sup>/<sub>32</sub> SOUTH AND 14.5' EAST OF CORNER AS SHOWN ON CORNER RECORD BY ROY F. WOODMAN. THIS CORNER WAS NOT ACCEPTED DUE TO METHOD USED.

SECTION CORNER - O.D.O.T. C-17-371  
 SET #4 REBAR WITH CAP STAMPED CA 2054. THIS CORNER WAS RE-ESTABLISHED USING OLD HIGHWAY PLANS AND FITS WELL WITH GLO DISTANCES. ALSO FOUND #4 REBAR 10.9' NORTH AND 9.4' EAST OF CORNER AS SHOWN ON CORNER RECORD FILED BY ALBERT C. McDONALD, JR.

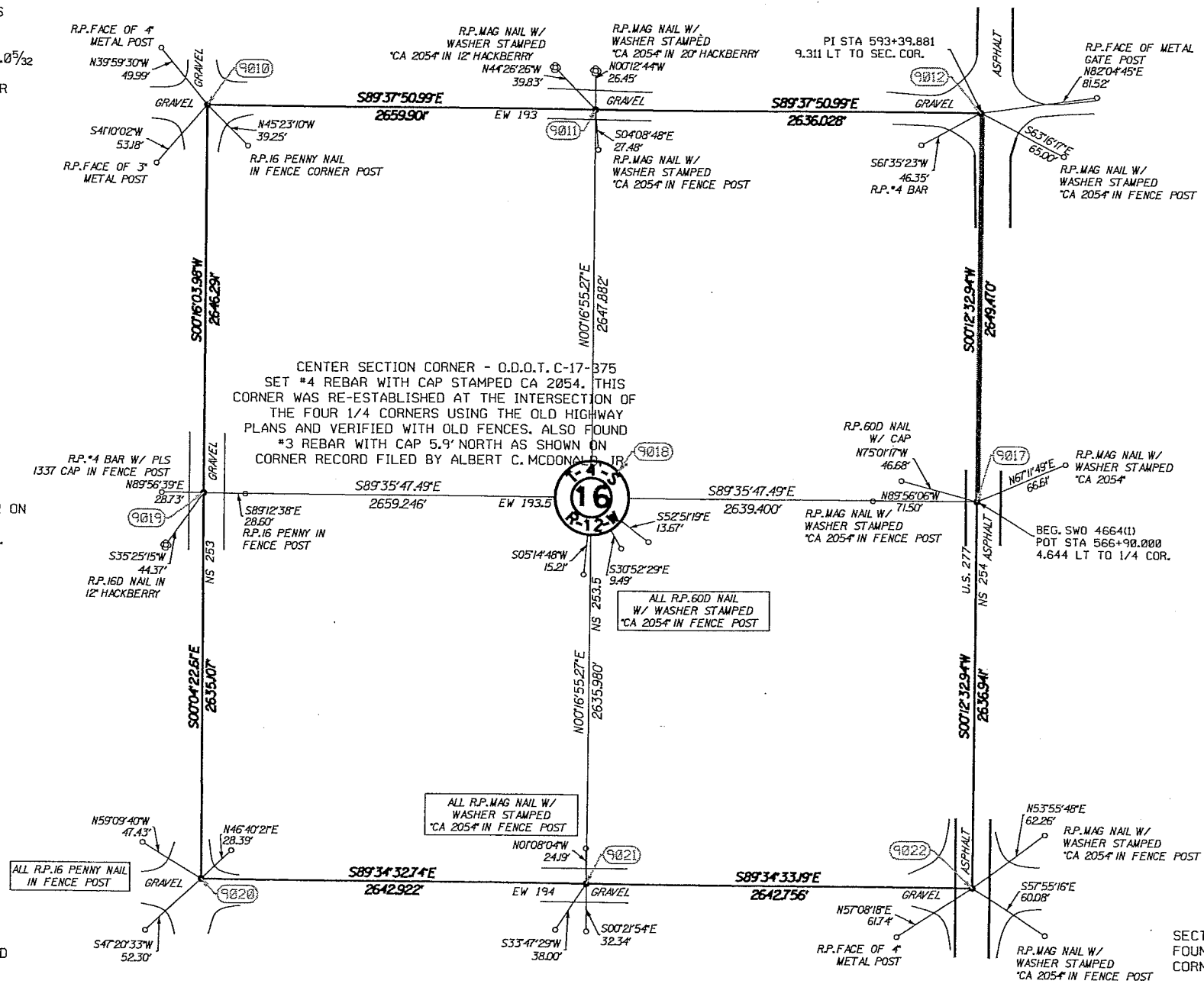
1/4 SECTION CORNER - O.D.O.T. C-17-374  
 SET #4 REBAR WITH CAP STAMPED CA 2054. THIS CORNER WAS RE-ESTABLISHED USING EXISTING IMPROVEMENTS. ALSO FOUND #4 REBAR WITH CAP STAMPED PLS 1337 14' EAST OF CORNER AS SHOWN ON CORNER RECORD FILED BY ROY F. WOODMAN. THIS CORNER WAS NOT ACCEPTED DUE TO METHOD USED.

CENTER SECTION CORNER - O.D.O.T. C-17-375  
 SET #4 REBAR WITH CAP STAMPED CA 2054. THIS CORNER WAS RE-ESTABLISHED AT THE INTERSECTION OF THE FOUR 1/4 CORNERS USING THE OLD HIGHWAY PLANS AND VERIFIED WITH OLD FENCES. ALSO FOUND #3 REBAR WITH CAP 5.9' NORTH AS SHOWN ON CORNER RECORD FILED BY ALBERT C. McDONALD, JR.

1/4 SECTION CORNER - O.D.O.T. C-17-376  
 SET #4 REBAR WITH CAP STAMPED CA 2054. THIS CORNER WAS RE-ESTABLISHED USING OLD HIGHWAY PLANS AND FITS WELL WITH EXISTING IMPROVEMENTS. ALSO FOUND P.K. NAIL 11.7' NORTH AND 4.7' EAST AS SHOWN ON CORNER RECORD FILED BY ALBERT C. McDONALD, JR.

SECTION CORNER - O.D.O.T. C-17-378  
 FOUND AND ACCEPTED #4 REBAR WITH CAP STAMPED PLS 1337 AS SHOWN ON CORNER RECORD FILED BY ROY F. WOODMAN. THIS MONUMENT FITS EXISTING IMPROVEMENTS.

1/4 SECTION CORNER - O.D.O.T. C-17-379  
 FOUND AND ACCEPTED #3 REBAR WITH UNREADABLE CAP. THIS MONUMENT APPEARS TO BE AT THE LOCATION SHOWN ON CORNER RECORD FILED BY ALBERT C. McDONALD, JR. AND FITS EXISTING IMPROVEMENTS.



SCALE:  
 1" = 500'

NOTE: REFERENCE'S SHOWN ARE NOT TO SCALE.

OKLAHOMA DEPARTMENT OF TRANSPORTATION			
SURVEY DIVISION			
SURVEY DATA SHEET			
PLS	SS		
DRAWN	SK		
CHECKED	SS		
APPROVED	SS		
CREW	JH, TK	SWO 4664	PROJECT NO. 28036(04) SHEET NO. 5/2