

OKLAHOMA DEPARTMENT OF TRANSPORTATION					
FED. ROAD DIST. NO.	STATE	PROJ. NO.	FISCAL YEAR	SHEET NO.	TOTAL SHEETS
	OKLA.				
DESCRIPTION			REVISIONS	DATE	

SECTION CORNER - O.D.O.T. C-17-363
 FOUND AND ACCEPTED #3 REBAR AS SHOWN ON
 CORNER RECORD FILED BY DENNIE J. HIGHTOWER.

1/4 SECTION CORNER - O.D.O.T. C-17-364
 FOUND AND ACCEPTED #4 REBAR AS SHOWN ON
 CORNER RECORD FILED BY DENNIE J. HIGHTOWER.

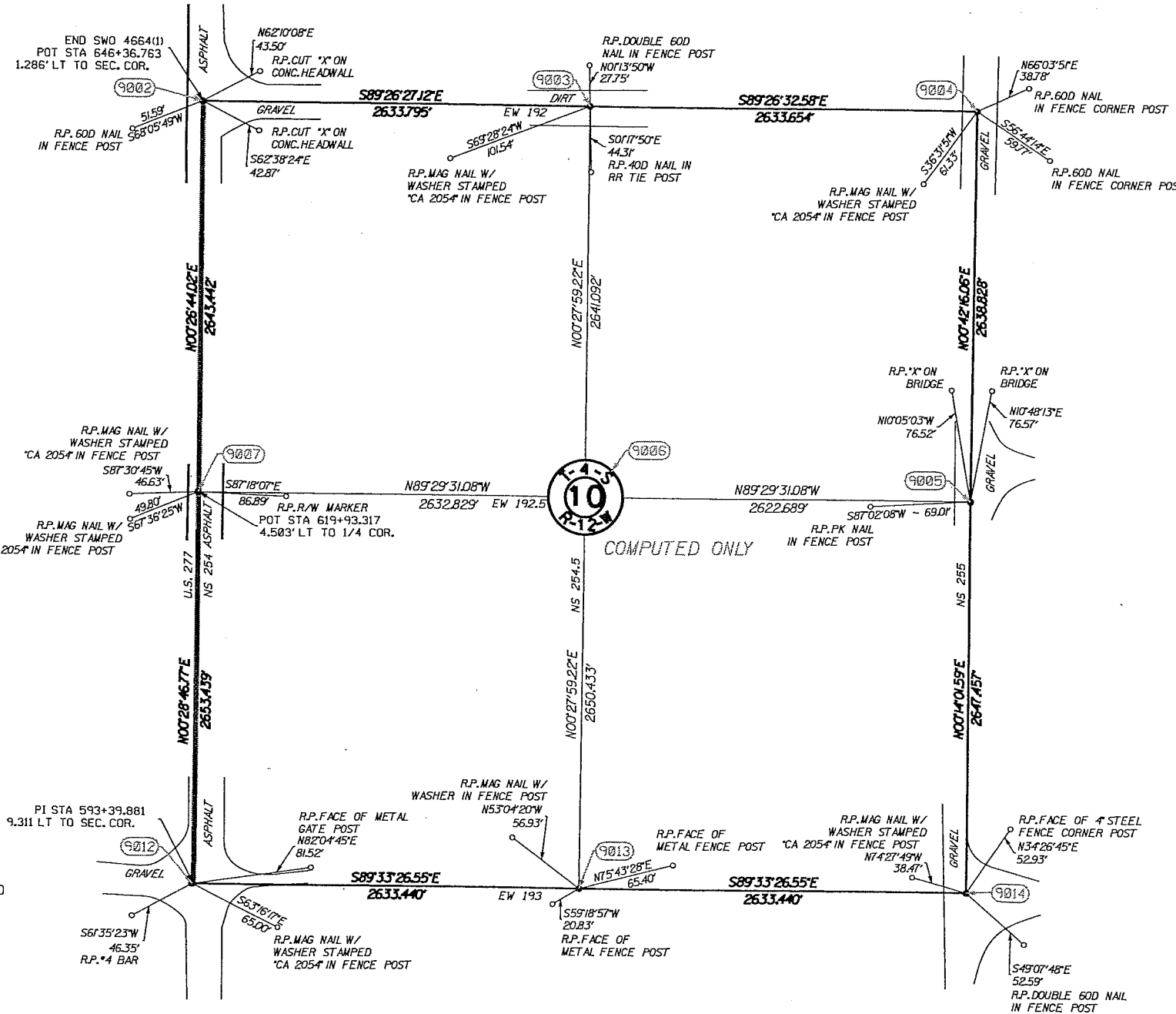
SECTION CORNER - O.D.O.T. C-17-365
 FOUND AND ACCEPTED #5 REBAR AS SHOWN ON
 CORNER RECORD FILED BY RANDY WAYNE MOSLEY.

1/4 SECTION CORNER - O.D.O.T. C-17-367
 SET #4 REBAR WITH CAP STAMPED CA 2054. THIS
 CORNER WAS RE-ESTABLISHED USING OLD HIGHWAY
 PLANS AND IS IN HARMONY WITH EXISTING
 IMPROVEMENTS. THERE WAS NO CORNER FILE ON
 RECORD.

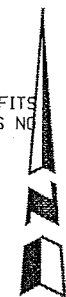
1/4 SECTION CORNER - O.D.O.T. C-17-368
 SET #4 REBAR WITH CAP STAMPED CA 2054. THIS
 CORNER WAS RE-ESTABLISHED USING EXISTING
 IMPROVEMENTS. THERE WAS NO CORNER RECORD ON
 FILE.

SECTION CORNER - O.D.O.T. C-17-371
 SET #4 REBAR WITH CAP STAMPED CA 2054. THIS
 CORNER WAS RE-ESTABLISHED USING OLD HIGHWAY
 PLANS AND FITS WELL WITH GLO DISTANCES. ALSO
 FOUND #4 REBAR 10.9' NORTH AND 9.4' EAST OF
 CORNER AS SHOWN ON CORNER RECORD FILED BY
 ALBERT C. McDONALD, JR.

SECTION CORNER - O.D.O.T. C-17-373
 FOUND AND ACCEPTED #4 REBAR. THIS CORNER FITS
 WELL WITH EXISTING IMPROVEMENTS. THERE WAS NO
 CORNER RECORD ON FILE.



1/4 SECTION CORNER - O.D.O.T. C-17-372
 SET #4 REBAR WITH CAP STAMPED CA 2054. THIS
 CORNER WAS RE-ESTABLISHED BY SINGLE PROPORTION.
 THERE WAS NO CORNER RECORD ON FILE.



SCALE:
 1" = 500'

NOTE: REFERENCE'S SHOWN ARE NOT TO SCALE.

OKLAHOMA DEPARTMENT OF TRANSPORTATION SURVEY DIVISION			
PLS	SS	SURVEY DATA SHEET	
DRAWN	SK		
CHECKED	SS		
APPROVED	SS		
CREW	JH, TK		
		SWO 4564 1C PROJECT NO 28038(04) SHEET NO 51	