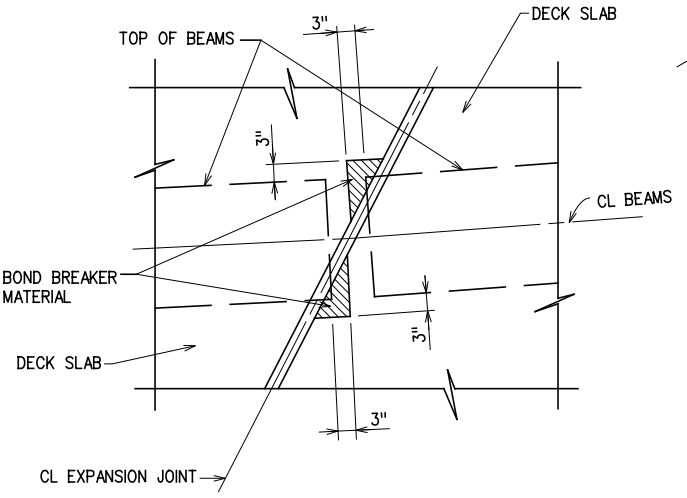


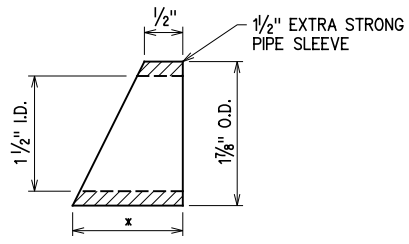
HAUNCH DETAIL

NOTE:
 PLAN QUANTITIES FOR "CLASS AA CONCRETE" INCLUDE BEAM HAUNCHES. HAUNCH HEIGHT SHOWN IS THE THEORETICAL HAUNCH HEIGHT AT CENTERLINE BEARING ONLY, MEASURED FROM BOTTOM OF DECK SLAB TO TOP OF BEAM, AND VARIES ACROSS THE SPAN. HAUNCH HEIGHT TO BE DETERMINED AFTER ERECTION OF BEAMS TO PROVIDE FOR BEAM CAMBER, DEAD LOAD DEFLECTION AND GRADE ADJUSTMENT AND SUBMITTED TO THE ENGINEER FOR APPROVAL. THE ENGINEER WILL NOT MEASURE DIFFERENCES BETWEEN THE THEORETICAL AND THE ACTUAL HAUNCH HEIGHTS FOR PAYMENT. SEE SHT. 92 FOR DEFLECTION DIAGRAMS.

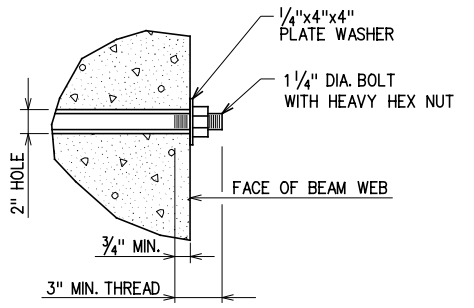


DETAIL OF BOND BREAK AT BEAM CORNER

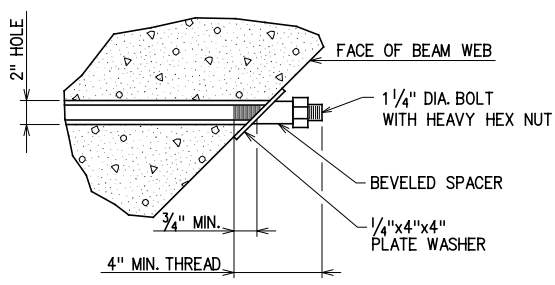
NOTE:
 WHERE THE TOP CORNER OF BEAM PROJECTS UNDER THE SLAB OF THE ADJACENT SPAN, A MINIMUM OF 1" CLEARANCE BETWEEN TOP OF BEAM AND BOTTOM OF SLAB SHALL BE PROVIDED IN THE HATCHED AREAS SHOWN ABOVE. 1" THICK EXPANSION MATERIAL SHALL BE USED AS A BOND BREAKER.



BEVELED SPACER
 * BEVEL AS REQUIRED TO ACCOUNT FOR SKEW AND CROSS SLOPE.



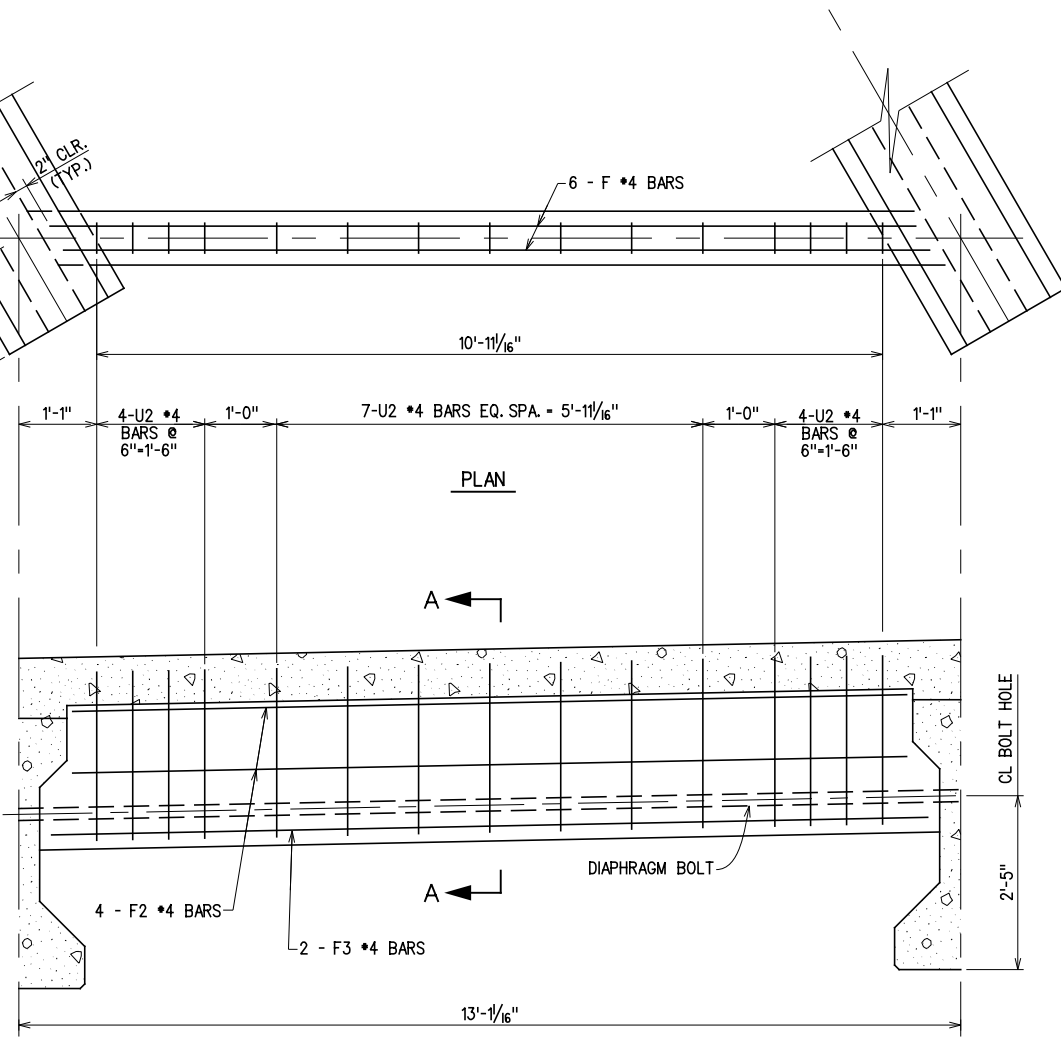
DETAIL DIAPHRAGM BOLT



DETAIL DIAPHRAGM BOLT SKEWED

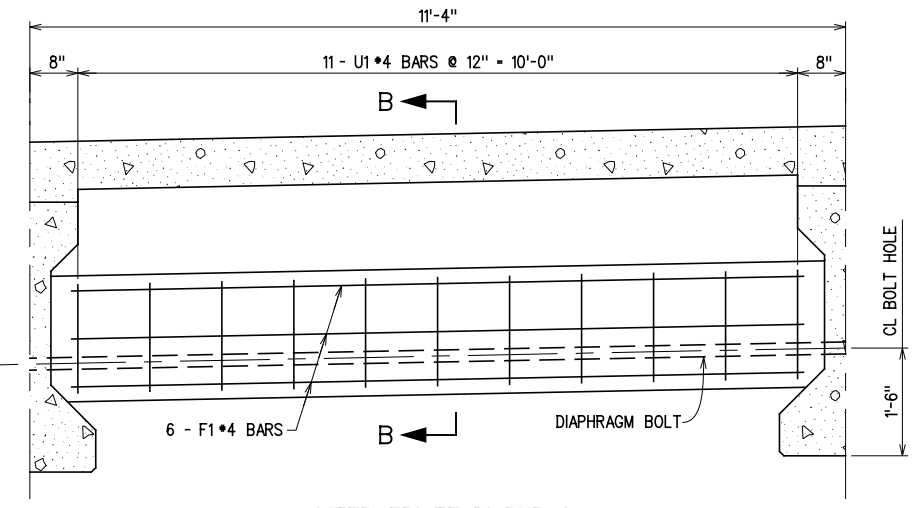
NOTE:
 STRUCTURAL STEEL FOR DIAPHRAGM BOLTS AND PLATE WASHERS SHALL CONFORM TO AASHTO M270 (ASTM A709), GRADE 50W (WEATHERING STEEL, CHARPY V-NOTCH TESTING NOT REQUIRED). A #10 REINFORCING BAR CONFORMING TO AASHTO M31, GRADE 60, AND THREADED AT THE ENDS AS SHOWN MAY BE SUBSTITUTED FOR THE DIAPHRAGM BOLT AT NO ADDITIONAL COST. HEX NUTS SHALL CONFORM TO AASHTO M291 (ASTM A563).

PAINT EXPOSED DIAPHRAGM BOLT, HEX NUT AND PLATE WASHER WITH TWO COATS OF ZINC RICH PAINT (MIN. 6 MIL THICKNESS) AFTER ASSEMBLY. ALL COST OF DIAPHRAGM BOLT, PLATE WASHER AND HEX NUT TO BE INCLUDED IN THE UNIT PRICE BID FOR "STRUCTURAL STEEL"

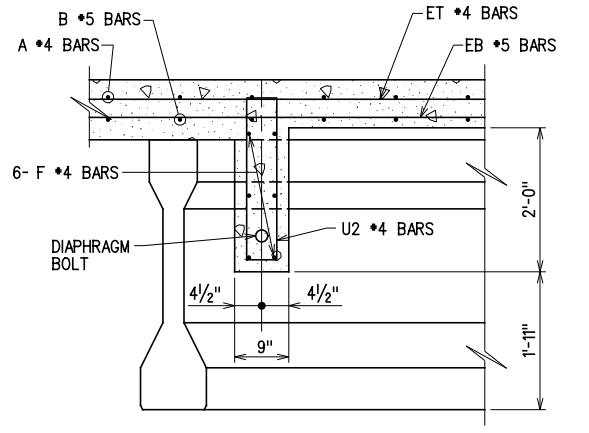


ELEVATION

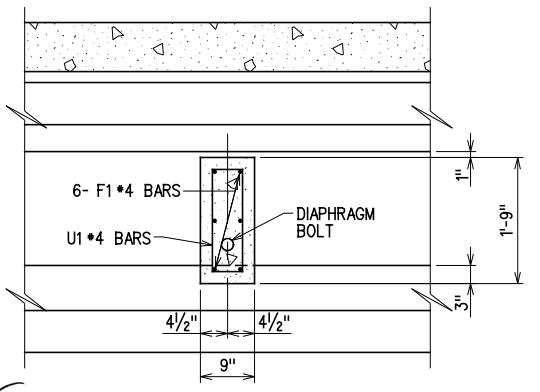
END DIAPHRAGM
 (TYPE III BEAMS)



INTERMEDIATE DIAPHRAGM
 (TYPE III BEAMS)



SECTION A-A



SECTION B-B



GROSSMAN & KEITH
 ENGINEERING COMPANY
 10408 GREENBRIAR PL., OKLA. CITY OK. 73159
 PH. 691-3213 FAX 691-3214
 CA. #74 EXPIRES 06/30/2016

DESIGN	
DRAWN	
CHECKED	
APPROVED	
SQUAD	G/K ENGR.

U.S. 277 OVER DEEP RED CREEK OVERFLOW COTTON COUNTY
 BRIDGE "C"
DIAPHRAGM DETAILS
 JOB PIECE NO. 28036(04) SHEET NO. 93

X:\guernsey\EC-1360\Struc\Bridge_C\DIAPH-3.dgn 6/2/2016