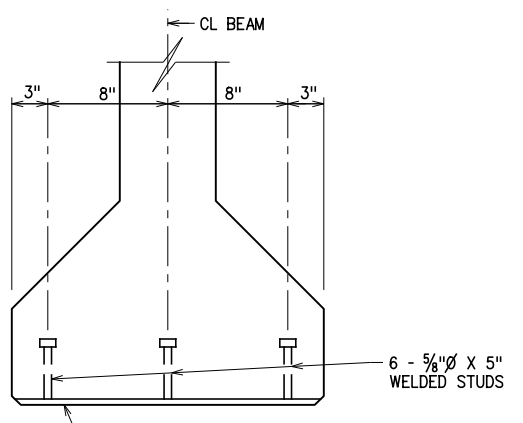
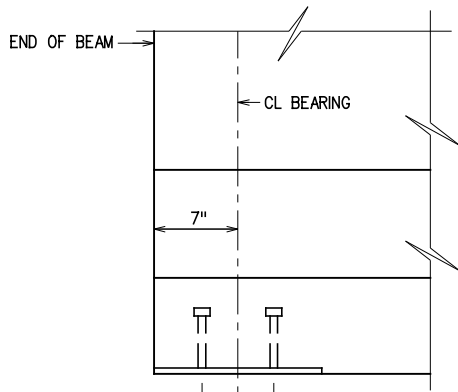


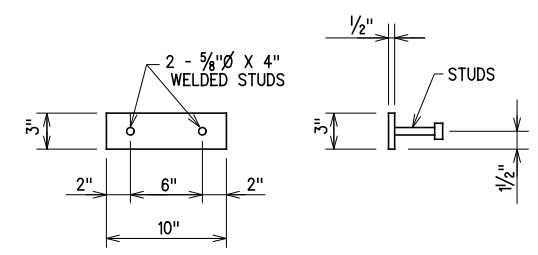
ELEVATION



END VIEW



ELEVATION



TOP VIEW

END VIEW

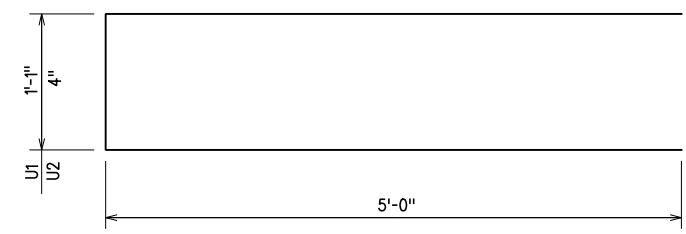
ENCASED BEAM PLATE DETAILS

NOTE: ENCASED BEAM PLATE LOCATED AT EXPANSION ENDS ONLY.

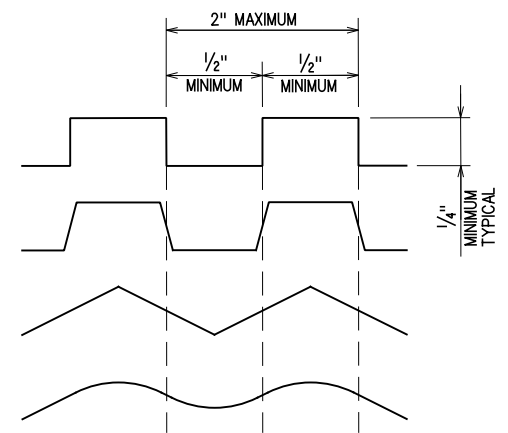
TYPE III P.C. BEAMS

ENCASED SOLE PLATE DETAILS

NOTE: ENCASED SOLE PLATE LOCATED AT EACH END OF BEAM.

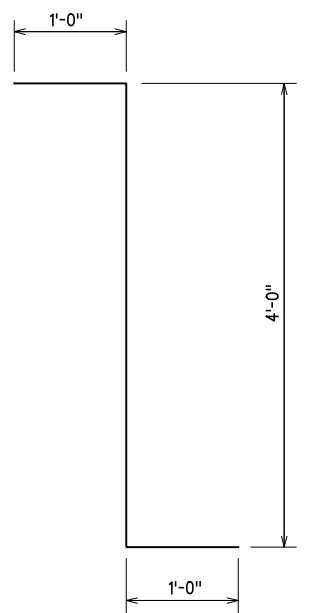


U1-#4 BAR x 11'-1"
U2-#5 BAR x 10'-4"

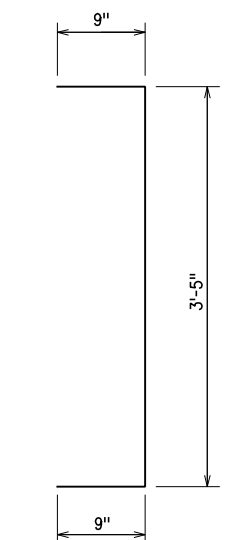


INTENTIONALLY ROUGHENED SURFACE EXAMPLES

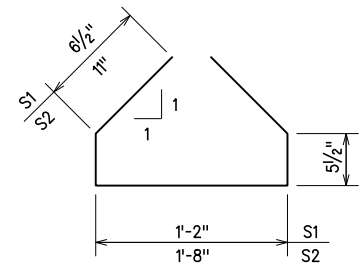
TOP SURFACE OF P.C. BEAMS SHALL BE INTENTIONALLY ROUGHENED TO A MINIMUM HEIGHT OF 1/4" OVER A MAXIMUM PITCH OF 2" MEASURED LONGITUDINALLY ALONG THE LENGTH OF THE BEAM. THE CREST AND TROUGH ASSOCIATED WITH THE HEIGHT SHALL NOT BE LESS THAN 1/2" AND SHALL EXTEND THE FULL WIDTH OF THE TOP FLANGE. ROUGHENED SURFACE MAY BE OBTAINED BY CLEANING THE CONCRETE SURFACE WITH A STIFF WIRE BRUSH (OR BLASTING) TO THE EXTENT THAT AGGREGATE IS EXPOSED TO A HEIGHT OF 1/4", OR BY ANOTHER APPROVED METHOD. THE METHOD USED SHALL BE SUBMITTED FOR APPROVAL BY THE ENGINEER. REPAIR ANY DAMAGE TO REINFORCEMENT EPOXY COATING BEFORE PLACEMENT OF DECK CONCRETE.



Z-#5 BAR x 6'-0"
(EPOXY COATED)

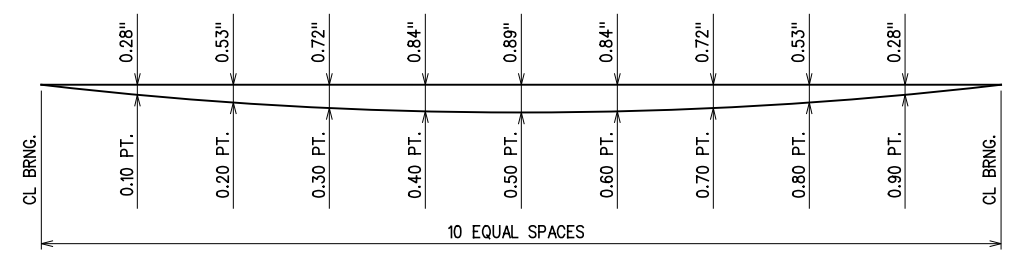


C-#5 BAR x 4'-11"



S1-#4 BAR x 3'-2"
S2-#4 BAR x 4'-5"

BAR BENDING DIAGRAMS
(ALL DIMENSIONS ARE OUT TO OUT)



DEAD LOAD DEFLECTION

DEFLECTION NOTES:
THE DEAD LOAD DEFLECTION SHOWN ABOVE AT THE TENTH POINTS ARE THE INITIAL DEFLECTIONS DUE TO DECK SLAB + DIAPHRAGMS + HAUNCH + 5 p.s.f. DECK FORM ALLOWANCE + CONCRETE TRAFFIC RAIL. IT DOES NOT INCLUDE THE BEAM WEIGHT OR FUTURE WEARING SURFACE.



GROSSMAN & KEITH
ENGINEERING COMPANY
10408 GREENBRIAR PL., OKLA. CITY OK. 73159
PH. 691-3213 FAX 691-3214
CA. #74 EXPIRES 06/30/2016

DESIGN	
DRAWN	
CHECKED	
APPROVED	
SQUAD	G/K ENGR.

U.S. 277 OVER DEEP RED CREEK OVERFLOW COTTON COUNTY
BRIDGE "C"
TYPE III P.C. BEAM DETAILS
(2 OF 2)
JOB PIECE NO. 28036(04) SHEET NO. 92

X:\quernsey\EC-1360\Struc\Bridge_C\BEAM-TYPE 3.dgn 6/2/2016