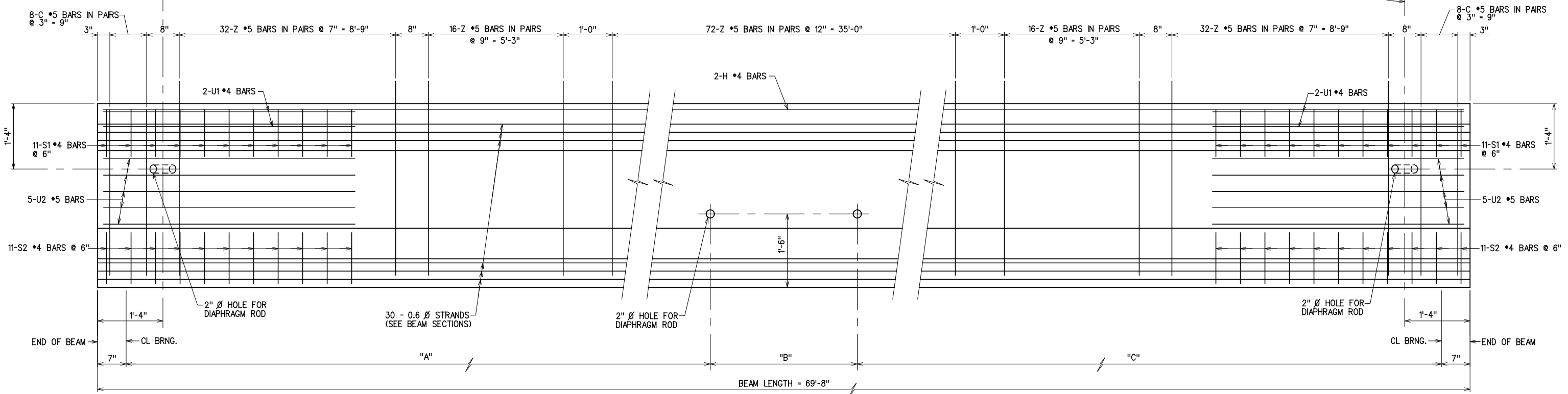
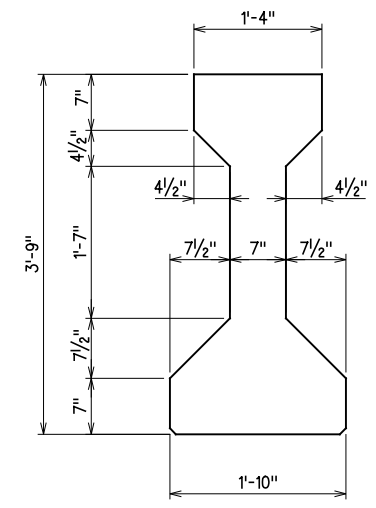
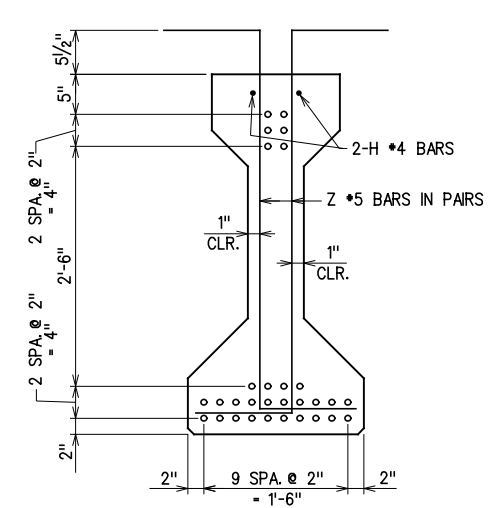
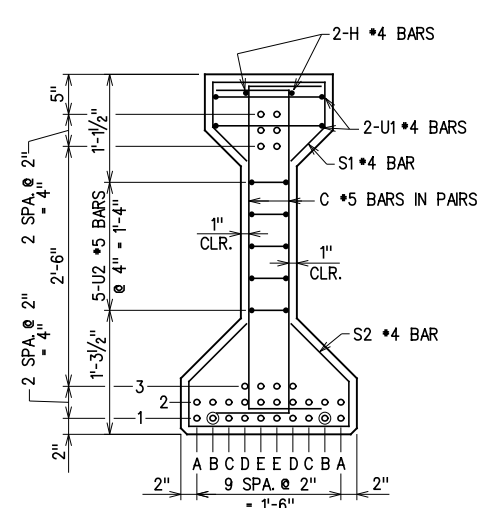


PLAN



ELEVATION

BEAM	BEAM DIMENSIONS		
	"A"	"B"	"C"
A	31'-6 3/4"	---	38'-1 1/4"
B	31'-6 3/4"	6'-6 1/2"	31'-6 3/4"
C	31'-6 3/4"	6'-6 1/2"	31'-6 3/4"
D	38'-1 1/4"	---	31'-6 3/4"



TYPE III BEAM SECTIONS
30 - 0.6 Ø STRANDS

DEBOND SCHEDULE	
DEBOND PAIR	DEBOND LENGTH FROM END OF BEAM
B1	6'-0"

PRESTRESSED CONCRETE BEAM NOTES

- COMPRESSIVE STRENGTH: THE REQUIRED COMPRESSIVE STRENGTH OF THE CONCRETE IN THE P.C. BEAMS IS 6.3 ksi AT TRANSFER OF PRESTRESS AND 9.0 ksi AT 28 DAYS.
- STRAND TYPE: THE TYPE OF PRESTRESSING STRAND REQUIRED IN THE P.C. BEAMS IS LOW-RELAXATION WITH A NOMINAL DIAMETER OF 0.6 INCHES AND AN ULTIMATE TENSILE STRENGTH OF 270 ksi.
- NOTES:
- DIAPHRAGM HOLE LOCATIONS ARE AT CL OF BEAM. VARIATIONS FOR CROSS SLOPE NOT SHOWN. SEE SHT. 84.
 - SEE SHT. 92 FOR DEAD LOAD DEFLECTION DIAGRAM.



GROSSMAN & KEITH
ENGINEERING COMPANY
10408 GREENBRIAR PL., OKLA. CITY OK. 73159
PH. 691-3213 FAX 691-3214
CA. #74 EXPIRES 06/30/2016

DESIGN		U.S. 277 OVER DEEP RED CREEK OVERFLOW	COTTON COUNTY
DRAWN		BRIDGE "C"	
CHECKED		TYPE III P.C. BEAM DETAILS (1 OF 2)	
APPROVED			
SQUAD	G/K ENGR.	JOB PIECE NO. 28036(04)	SHEET NO. 91

6/2/2016 X:\guernsey\EC-1360\Struc\Bridge_C\BEAM-TYPE 3.dgn