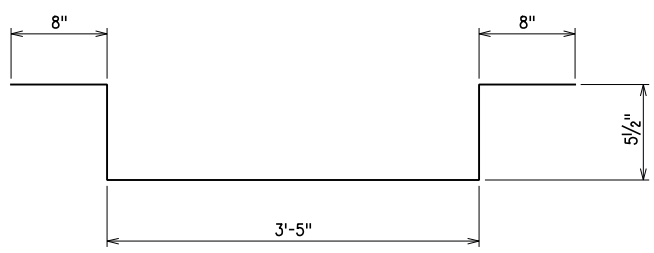
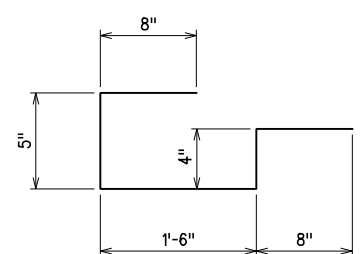


SUPERSTRUCTURE BAR LIST					
SPAN 1					
MARK	NO.	SIZE	FORM	LENGTH	LENGTH VARIATION
EPOXY COATED REINFORCING					
A	50	*4	BNT.	42'-10"	
① A1	44	*4	BNT.	20'-11" (AVG.)	2'-9" TO 39'-1"
AC	196	*6	BNT.	12'-3"	
② AC1	88	*6	BNT.	21'-11/2" (AVG.)	3'-6" TO 40'-5"
B	50	*5	STR.	41'-10"	
② B1	88	*5	STR.	20'-10 1/2" (AVG.)	2'-3" TO 39'-6"
④ ET1	43	*4	STR.	145'-5"	
③ ET3	76	*4	STR.	13'-7" (AVG.)	3'-3" TO 23'-11"
⑤ EB1	43	*5	STR.	146'-5"	
③ EB3	76	*5	STR.	13'-7" (AVG.)	3'-3" TO 23'-11"
AH1	12	*4	BNT.	3'-2"	
AH2	33	*4	BNT.	6'-0"	
AS	43	*4	BNT.	5'-0"	
AT1	4	*5	BNT.	25'-5"	
AT2	4	*5	BNT.	25'-4"	
FPH	36	*4	BNT.	5'-8"	
FPT1	2	*5	BNT.	25'-5"	
FPT2	2	*5	BNT.	25'-4"	
FPT3	1	*4	STR.	40'-5"	
SR1	300	*5	BNT.	4'-1"	PARAPET REINFORCING
F1	18	*4	STR.	10'-5"	IN INTER. DIAPHRAGM
F2	24	*4	STR.	11'-2"	IN END DIAPHRAGM
F3	12	*4	STR.	12'-0"	IN END DIAPHRAGM
U1	33	*4	BNT.	4'-1"	IN INTER. DIAPHRAGM
U2	90	*4	BNT.	5'-9"	IN END DIAPHRAGM

- ① 2 SETS OF 22 BARS
- ② 2 SETS OF 44 BARS
- ③ 2 SETS OF 38 BARS
- ④ INCLUDES 4'-0" FOR (2) 2'-0" LAP SPLICES. BARS SHALL BE CONTINUOUS THRU CONSTRUCTION JOINT AT FIXED PIERS INTO ADJACENT SPAN. DO NOT LAP WITHIN 10' OF CENTERLINE OF FIXED PIER. STAGGER SPLICES.
- ⑤ INCLUDES 5'-0" FOR (2) 2'-6" LAP SPLICES. BARS SHALL BE CONTINUOUS THRU CONSTRUCTION JOINT AT FIXED PIERS INTO ADJACENT SPAN. DO NOT LAP WITHIN 10' OF CENTERLINE OF FIXED PIER. STAGGER SPLICES.



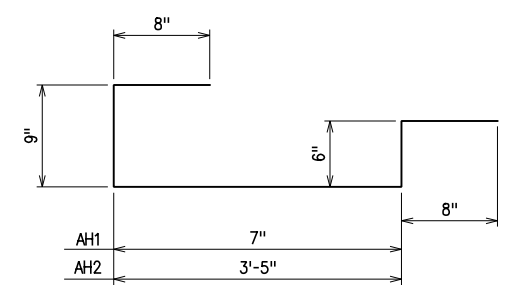
FPH-#4 BAR X 5'-8"



EPH-#4 BAR X 3'-7"

SUPERSTRUCTURE BAR LIST					
SPAN 2					
MARK	NO.	SIZE	FORM	LENGTH	LENGTH VARIATION
EPOXY COATED REINFORCING					
A	48	*4	BNT.	42'-10"	
① A2	44	*4	BNT.	20'-11 1/2" (AVG.)	2'-9" TO 39'-2"
AC	188	*6	BNT.	12'-3"	
② AC2	88	*6	BNT.	22'-0" (AVG.)	3'-6" TO 40'-6"
B	48	*5	STR.	41'-10"	
② B2	88	*5	STR.	20'-10 1/2" (AVG.)	2'-3" TO 39'-6"
③ ET3	76	*4	STR.	13'-7" (AVG.)	3'-3" TO 23'-11"
③ EB3	76	*5	STR.	13'-7" (AVG.)	3'-3" TO 23'-11"
FPT1	2	*5	BNT.	25'-5"	
FPT2	2	*5	BNT.	25'-4"	
FPT3	1	*4	STR.	40'-5"	
EJ	3	*5	STR.	44'-0"	
EPH	43	*4	BNT.	3'-7"	
EPT1	2	*5	BNT.	25'-5"	
EPT2	2	*5	BNT.	25'-4"	
SR1	276	*5	BNT.	4'-1"	PARAPET REINFORCING
F1	18	*4	STR.	10'-5"	IN INTER. DIAPHRAGM
F2	24	*4	STR.	11'-2"	IN END DIAPHRAGM
F3	12	*4	STR.	12'-0"	IN END DIAPHRAGM
U1	33	*4	BNT.	4'-1"	IN INTER. DIAPHRAGM
U2	90	*4	BNT.	5'-9"	IN END DIAPHRAGM

- ① 2 SETS OF 22 BARS
- ② 2 SETS OF 44 BARS
- ③ 2 SETS OF 38 BARS



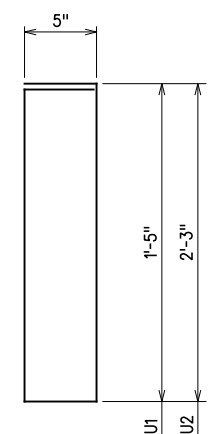
AH1-#4 BAR X 3'-2"
AH2-#4 BAR X 6'-0"

NOTE:
1. SEE STANDARD TR4-2 FOR TRAFFIC RAIL DETAILS AND BAR BENDS.

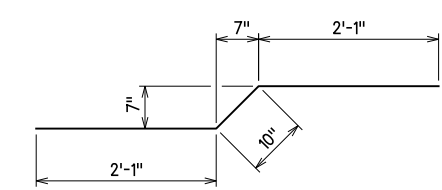
BAR BENDING DIAGRAMS
(ALL DIMENSIONS ARE OUT TO OUT)

SUPERSTRUCTURE BAR LIST					
SPAN 3					
MARK	NO.	SIZE	FORM	LENGTH	LENGTH VARIATION
EPOXY COATED REINFORCING					
A	50	*4	BNT.	42'-10"	
① A3	44	*4	BNT.	20'-10" (AVG.)	2'-8" TO 39'-0"
AC	196	*6	BNT.	12'-3"	
② AC3	88	*6	BNT.	21'-10 1/2" (AVG.)	3'-5" TO 40'-4"
B	50	*5	STR.	41'-10"	
② B3	88	*5	STR.	20'-9 1/2" (AVG.)	2'-2" TO 39'-5"
④ ET2	43	*4	STR.	73'-5"	
③ ET3	76	*4	STR.	13'-7" (AVG.)	3'-3" TO 23'-11"
⑤ EB2	43	*5	STR.	73'-11"	
③ EB3	76	*5	STR.	13'-7" (AVG.)	3'-3" TO 23'-11"
AH1	12	*4	BNT.	3'-2"	
AH2	33	*4	BNT.	6'-0"	
AS	43	*4	BNT.	5'-0"	
AT1	4	*5	BNT.	25'-5"	
AT2	4	*5	BNT.	25'-4"	
EJ	3	*5	STR.	44'-0"	
EPH	43	*4	BNT.	3'-7"	
EPT1	2	*5	BNT.	25'-5"	
EPT2	2	*5	BNT.	25'-4"	
SR1	292	*5	BNT.	4'-1"	PARAPET REINFORCING
F1	18	*4	STR.	10'-5"	IN INTER. DIAPHRAGM
F2	24	*4	STR.	11'-2"	IN END DIAPHRAGM
F3	12	*4	STR.	12'-0"	IN END DIAPHRAGM
U1	33	*4	BNT.	4'-1"	IN INTER. DIAPHRAGM
U2	90	*4	BNT.	5'-9"	IN END DIAPHRAGM

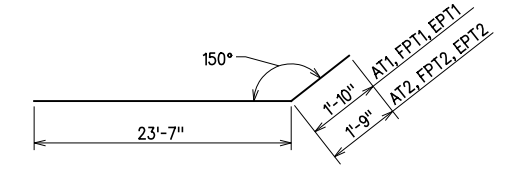
- ① 2 SETS OF 22 BARS
- ② 2 SETS OF 44 BARS
- ③ 2 SETS OF 38 BARS
- ④ INCLUDES 2'-0" FOR (1) 2'-0" LAP SPLICE STAGGER SPLICES
- ⑤ INCLUDES 2'-6" FOR (1) 2'-6" LAP SPLICE STAGGER SPLICES



U1-#4 BAR X 4'-1"
U2-#4 BAR X 5'-9"



AS-#4 BAR X 5'-0"



AT1, FPT1, EPT1-#5 BAR X 25'-5"
AT2, FPT2, EPT2-#5 BAR X 25'-4"



GROSSMAN & KEITH
ENGINEERING COMPANY
10408 GREENBRIAR PL., OKLA. CITY OK. 73159
PH. 691-3213 FAX 691-3214
CA. #74 EXPIRES 06/30/2016

DESIGN		U.S. 277 OVER DEEP RED CREEK OVERFLOW	COTTON COUNTY
DRAWN		BRIDGE "C"	
CHECKED		CONCRETE DECK DETAILS (3 OF 3)	
APPROVED			
SQUAD	G/K ENGR.	JOB PIECE NO. 28036(04)	SHEET NO. 90

X:\guernsey\EC-1360\Struc\Bridge_C\DECK-DET.dgn 6/2/2016