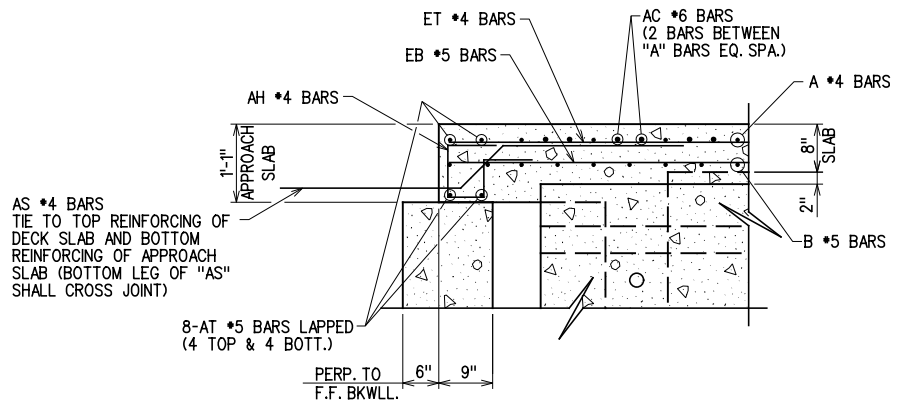
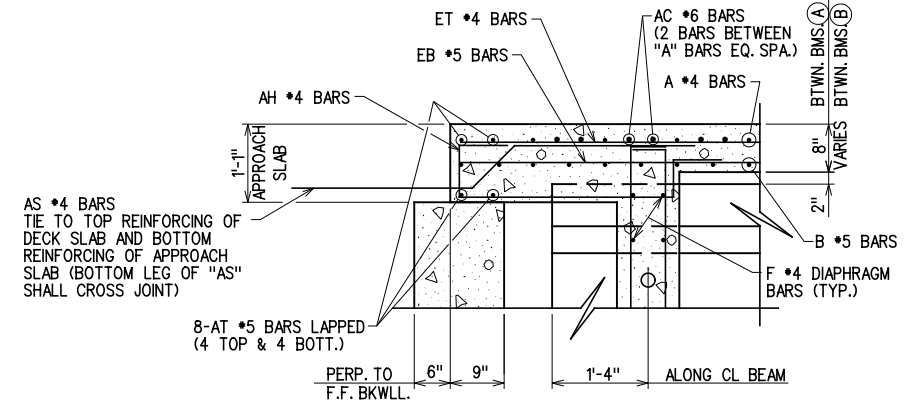


SECTION THRU ABUTMENT AT OVERHANG

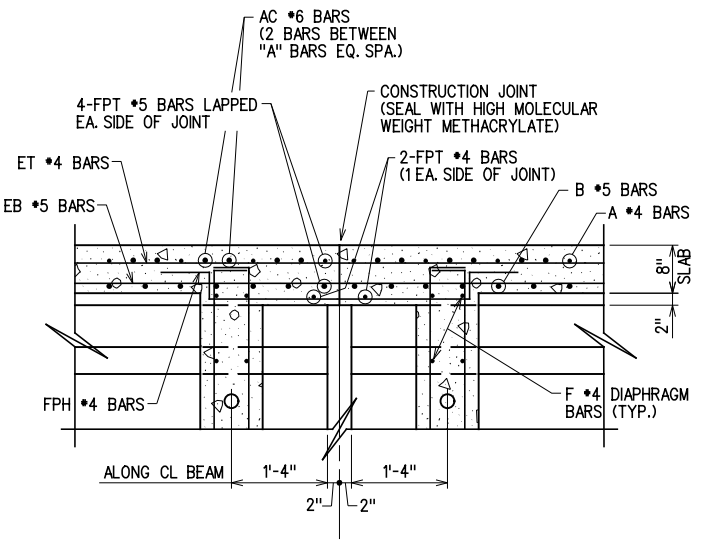


SECTION THRU ABUTMENT AT BEAM

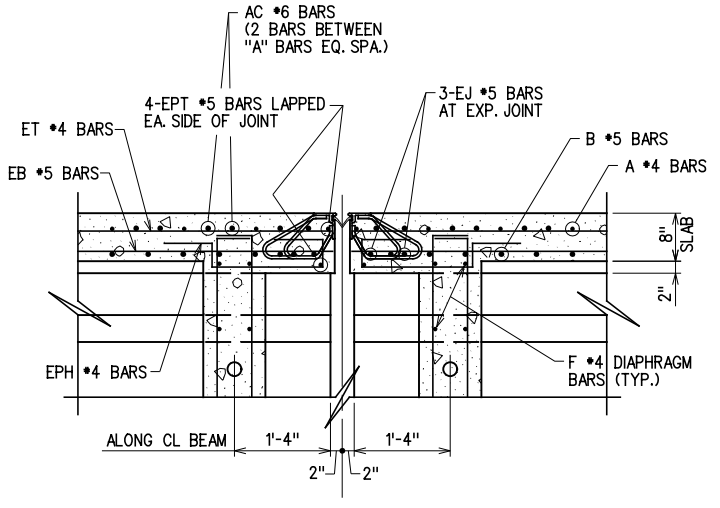


SECTION THRU ABUTMENT BETWEEN BEAMS

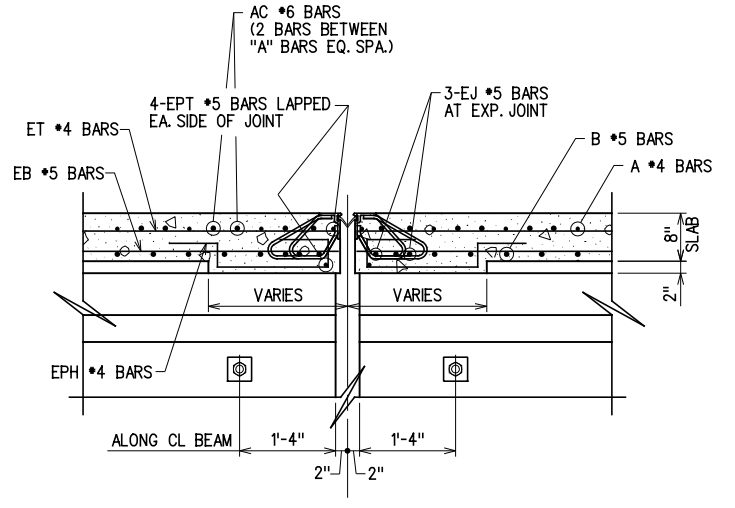
UNDER NO CIRCUMSTANCES SHOULD THE SLAB BE A CONTINUOUS POUR OVER THE FIXED PIER. THIS LOCATION SHALL HAVE A CONSTRUCTION JOINT IN THE SLAB. THE LONGITUDINAL REINFORCING STEEL SHALL BE CONTINUOUS THRU THE CONSTRUCTION JOINT.



SECTION AT FIXED PIER (PIER NO. 1)



SECTION AT EXPANSION PIER BETWEEN BEAMS (PIER NO. 2)



SECTION AT EXPANSION PIER AT OVERHANG (PIER NO. 2)

X:\guernsey\EC-1360\Struc\Bridge_C\DECK-SEC.dgn 6/2/2016



GROSSMAN & KEITH
ENGINEERING COMPANY
10408 GREENBRIAR PL., OKLA. CITY OK. 73159
PH. 691-3213 FAX 691-3214
CA. #74 EXPIRES 06/30/2016

DESIGN		U.S. 277 OVER DEEP RED CREEK OVERFLOW BRIDGE "C" CONCRETE DECK DETAILS (2 OF 3)	COTTON COUNTY
DRAWN			
CHECKED			
APPROVED			
SQUAD	G/K ENGR.		
JOB PIECE NO. 28036(04)		SHEET NO. 89	