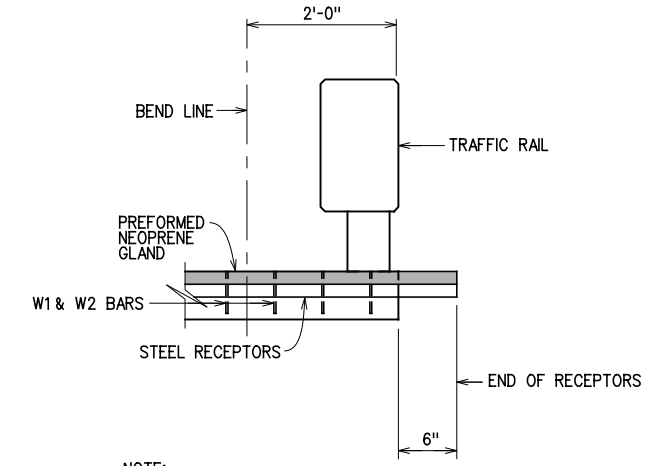


PIER NO. 2  
DECK JOINT DETAIL  
SCALE: NONE

EXPANSION JOINT OPENING	
PIER NO. 2	
TEMP.	WIDTH ①
11° - 19°	2 3/8"
20° - 28°	2 1/4"
29° - 37°	2 1/8"
38° - 48°	2"
49° - 57°	1 7/8"
58° - 66°	1 3/4"
67° - 75°	1 5/8"
76° - 84°	1 1/2"
85° - 93°	1 3/8"
94° - 102°	1 1/4"
103° - 111°	1 1/8"

① JOINT SETTING WIDTHS ARE MEASURED PERPENDICULAR TO THE JOINT



NOTE:  
SEE STANDARDS EJ-SK AND EJ-DTL FOR ADDITIONAL JOINT DETAILS.

SECTION AT TRAFFIC RAIL  
WITH OPENINGS

X:\guernsey\EC-1360\Struc\Bridge\_C\EXPJT.dgn 6/2/2016



**GROSSMAN & KEITH**  
ENGINEERING COMPANY  
10408 GREENBRIAR PL., OKLA. CITY OK. 73159  
PH. 691-3213 FAX 691-3214  
CA. #74 EXPIRES 06/30/2016

DESIGN	
DRAWN	
CHECKED	
APPROVED	
SQUAD	G/K ENGR.

U.S. 277 OVER DEEP RED CREEK OVERFLOW COTTON COUNTY  
BRIDGE "C"  
EXPANSION JOINT DETAILS  
JOB PIECE NO. 28036(04) SHEET NO. 87