

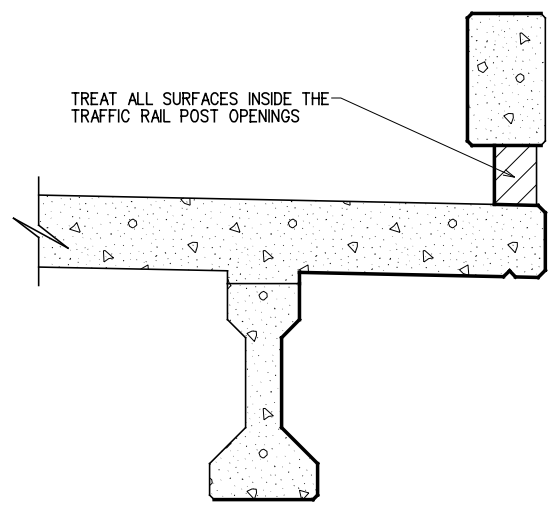
HALF SECTION AT INTERMEDIATE DIAPHRAGM

HALF SECTION AT END DIAPHRAGM

TYPICAL SECTION

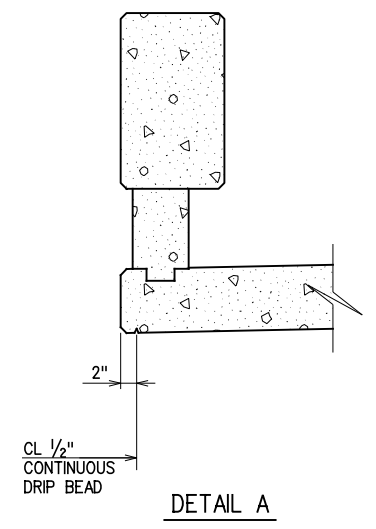
SUPERSTRUCTURE QUANTITIES					
ITEM	UNIT	SPAN 1	SPAN 2	SPAN 3	TOTAL
PRESTRESSED CONCRETE BEAMS (TYPE III)	L.F.	278.7	278.7	278.7	836.1
SAW-CUT GROOVING	S.Y.	319.4	310.7	318.9	949.0
SEALED EXPANSION JOINT	L.F.	---	49.1	---	49.1
CONCRETE RAIL (TR4)	L.F.	143.7	139.9	143.6	427.2
① STRUCTURAL STEEL	LB.	560.0	560.0	560.0	1,680.0
STAINLESS STEEL FIXED BEARING ASSEMBLY	EA.	4.0	---	4.0	8.0
STAINLESS STEEL EXPANSION BEARING ASSEMBLY	EA.	4.0	8.0	4.0	16.0
② CLASS AA CONCRETE	C.Y.	84.7	81.2	84.6	250.5
EPOXY COATED REINFORCING STEEL	LB.	28,060.0	16,630.0	22,770.0	67,460.0
WATER REPELLENT (VISUALLY INSPECTED)	S.Y.	233.0	224.0	232.0	689.0
SEALER CRACK PREPERATION	L.F.	46.7	---	---	46.7
SEALER RESIN	GAL.	0.5	---	---	0.5

- ① DIAPHRAGM RODS AND FITTINGS
- ② INCLUDES 6.9 C.Y. FOR HAUNCHES



PENETRATING WATER REPELLENT TREATMENT

NOTE:
SURFACES INDICATED WITH HEAVY LINES SHALL BE TREATED WITH A PENETRATING WATER REPELLENT SURFACE TREATMENT



DETAIL A

GROSSMAN & KEITH
ENGINEERING COMPANY
10408 GREENBRIAR PL., OKLA. CITY OK. 73159
PH. 691-3213 FAX 691-3214
CA. #74 EXPIRES 06/30/2016

DESIGN	
DRAWN	
CHECKED	
APPROVED	
SQUAD	G/K ENGR.

X:\guernsey\EC-1360\Struc\Bridge_C\TYP.dgn

6/2/2016