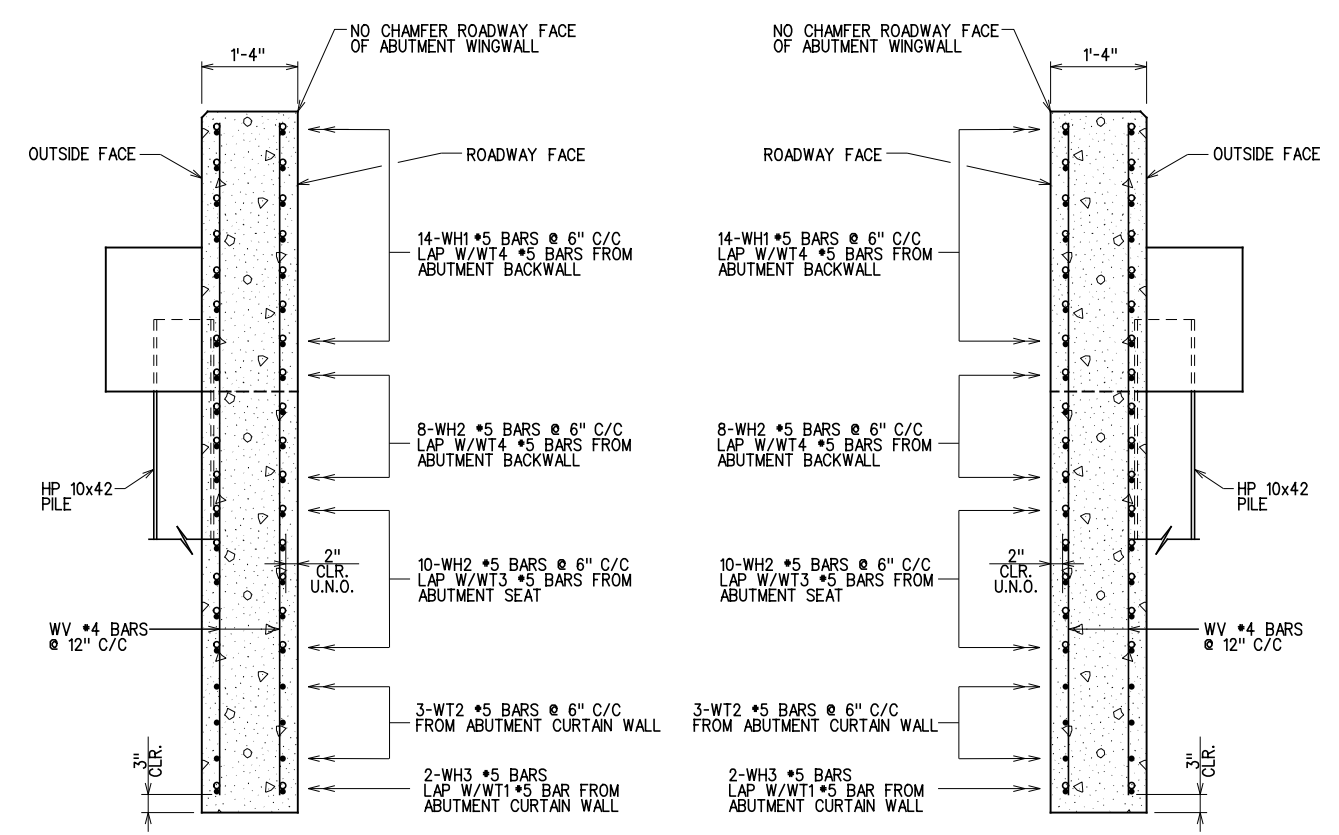


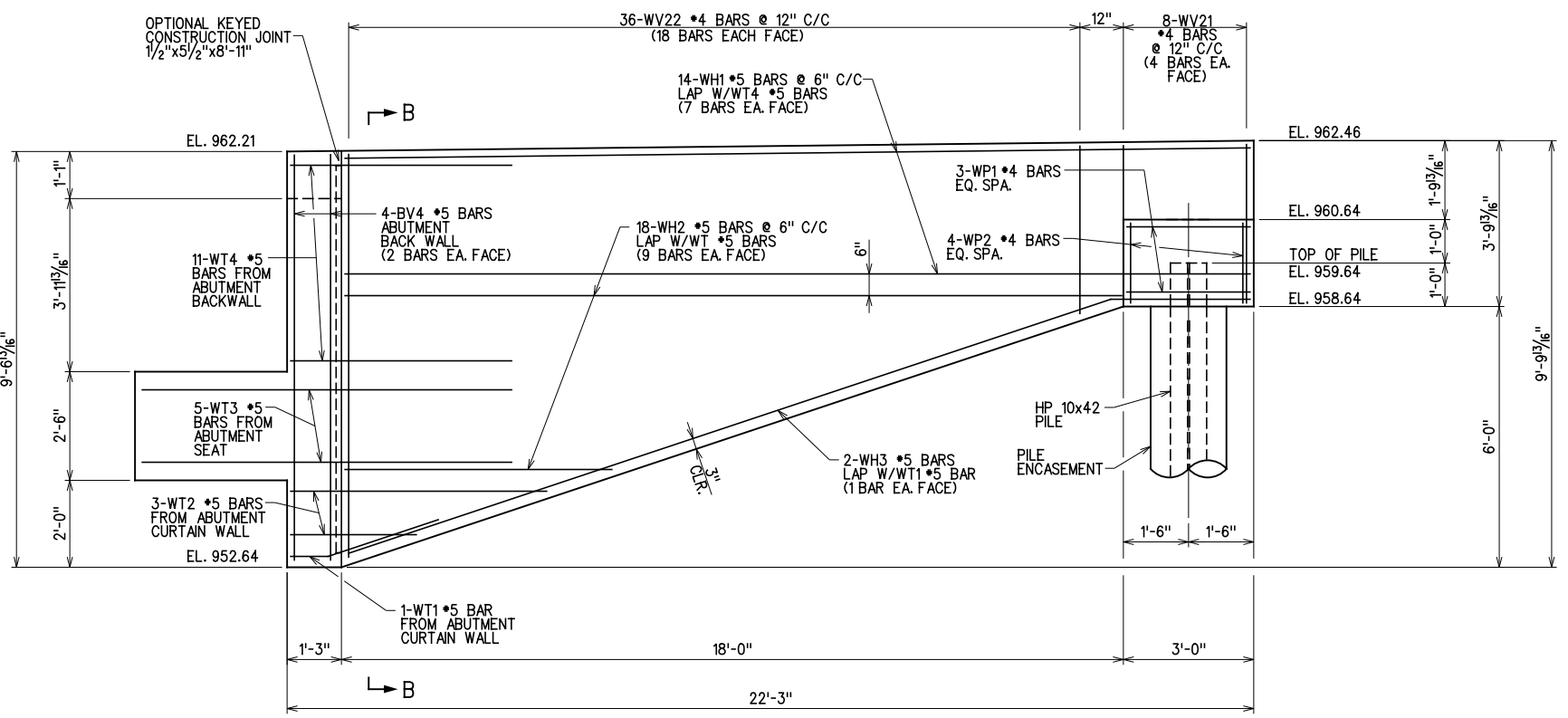
ABUTMENT NO. 2 - WEST WING



SECTION A-A

SECTION B-B

NOTE: PILE ENCASEMENT NOT SHOWN FOR CLARITY.



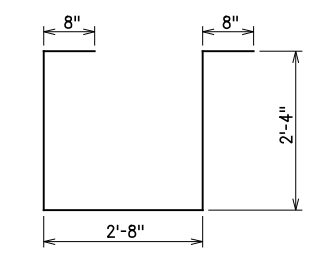
ABUTMENT NO. 2 - EAST WING

ABUTMENT WING BAR LIST					
WEST WING					
MARK	NO.	SIZE	FORM	LENGTH	LENGTH VARIATION
EPOXY COATED REINFORCING					
WH1	14	#5	STR.	20'-8"	
① WH2	18	#5	STR.	11'-9" (AVG.)	5'-9" TO 17'-9"
WH3	2	#5	BNT.	21'-7"	
WV11	8	#4	STR.	3'-7"	
② WV12	36	#4	STR.	6'-7 1/2" (AVG.)	3'-11" TO 9'-4"
WP1	3	#4	BNT.	8'-8"	
WP2	4	#4	STR.	1'-7"	

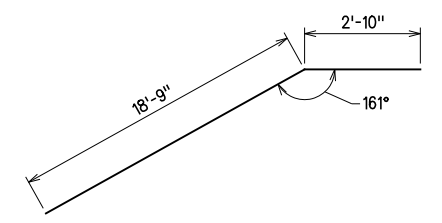
① 2 SETS OF 9 BARS
② 2 SETS OF 18 BARS

ABUTMENT WING BAR LIST					
EAST WING					
MARK	NO.	SIZE	FORM	LENGTH	LENGTH VARIATION
EPOXY COATED REINFORCING					
WH1	14	#5	STR.	20'-8"	
① WH2	18	#5	STR.	11'-9" (AVG.)	5'-9" TO 17'-9"
WH3	2	#5	BNT.	21'-7"	
WV21	8	#4	STR.	3'-4"	
② WV22	36	#4	STR.	6'-4 1/2" (AVG.)	3'-8" TO 9'-1"
WP1	3	#4	BNT.	8'-8"	
WP2	4	#4	STR.	1'-7"	

① 2 SETS OF 9 BARS
② 2 SETS OF 18 BARS



WP1 - #4 BAR x 8'-8"



WH3 - #5 BAR x 21'-7"



BAR BENDING DIAGRAMS
(ALL DIMENSIONS ARE OUT TO OUT)

GROSSMAN & KEITH
ENGINEERING COMPANY
10408 GREENBRIAR PL., OKLA. CITY OK. 73159
PH. 691-3213 FAX 691-3214
CA. #74 EXPIRES 06/30/2016

DESIGN		ABUTMENT NO. 2	
DRAWN		DESIGN	
CHECKED		DRAWN	
APPROVED		CHECKED	
SQUAD	G/K ENGR.	APPROVED	

U.S. 277 OVER DEEP RED CREEK OVERFLOW COTTON COUNTY
BRIDGE "C"
ABUTMENT DETAILS (8 OF 8)

JOB PIECE NO. 28036(04) SHEET NO. 80

X:\quernsey\EC-1360\Struc\Bridge_C\ABUT2-3.dgn

6/2/2016