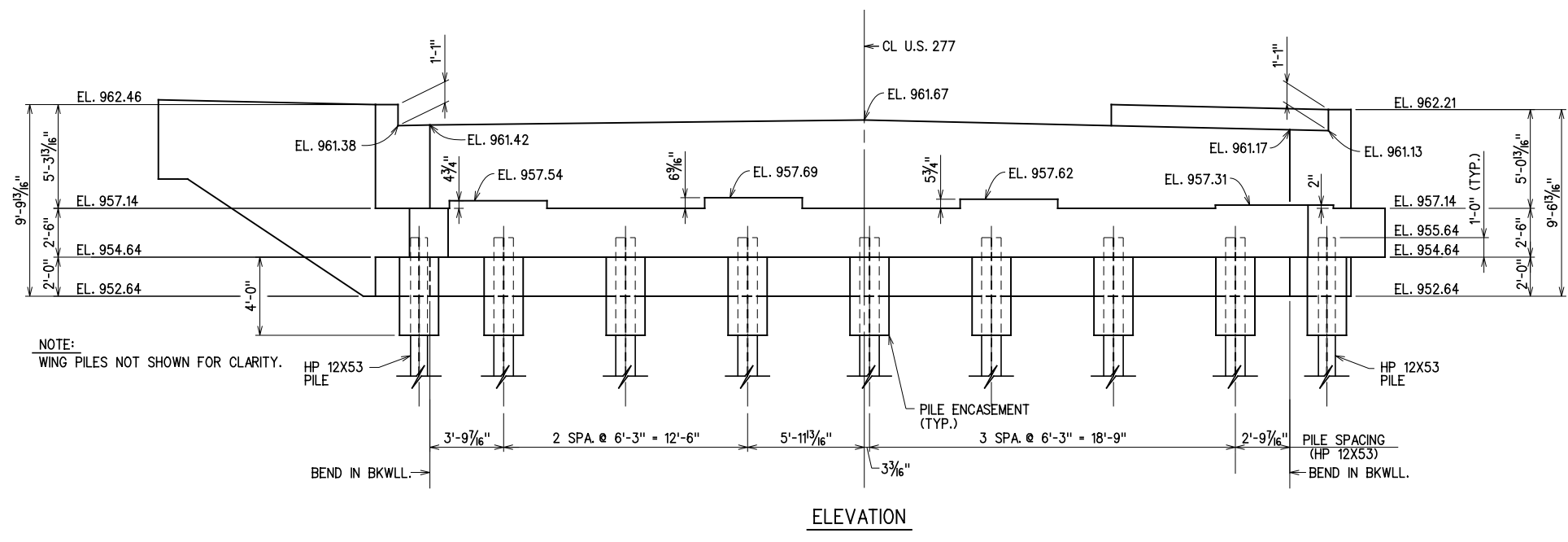
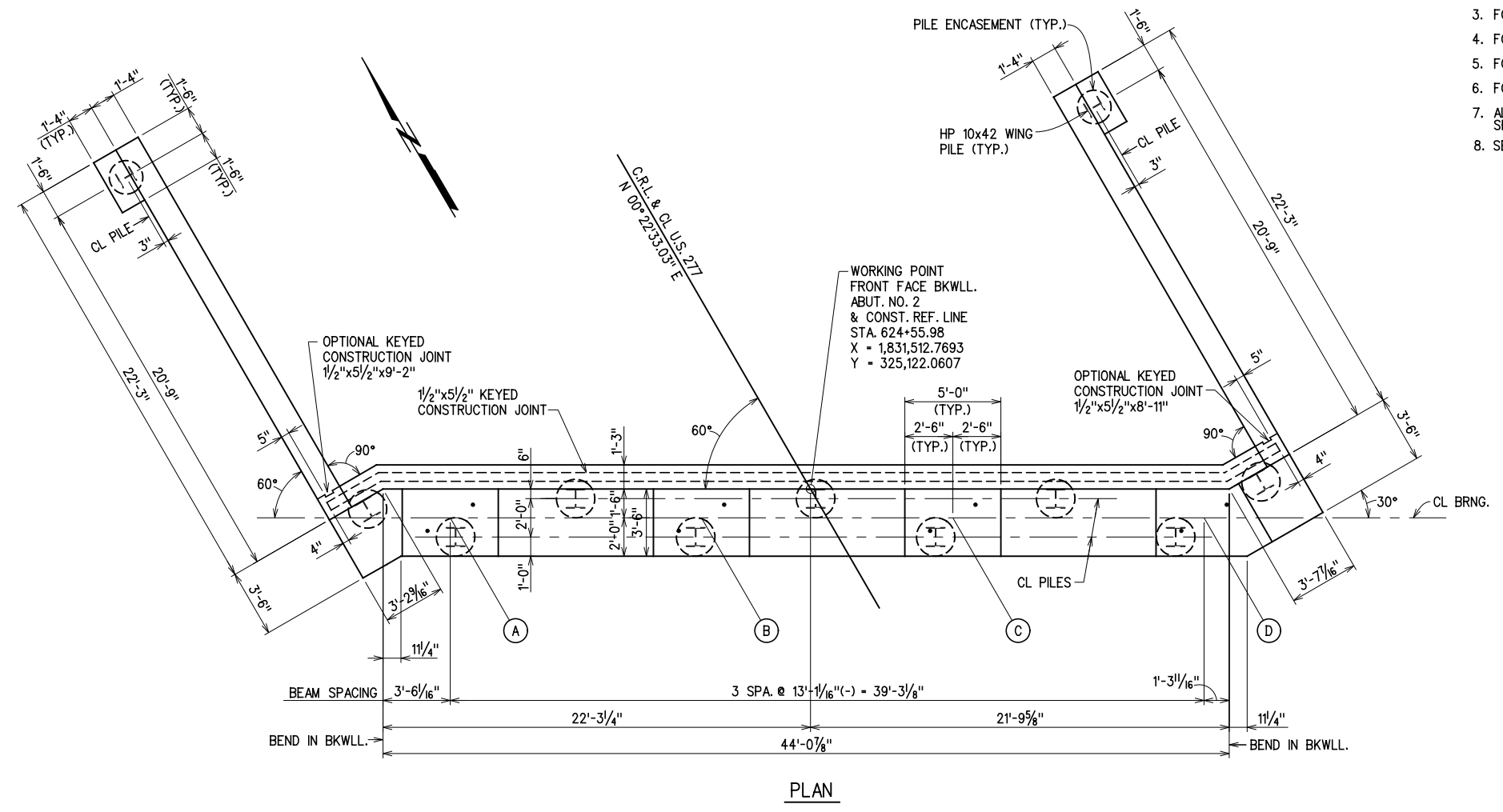
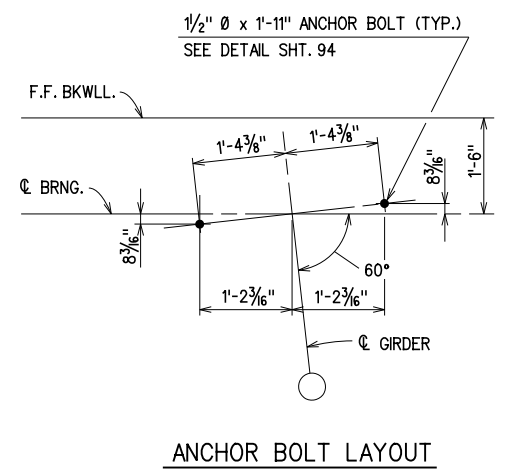


- NOTES:**
- FOR WINGWALL ELEVATIONS, SEE SHT. 80.
 - FOR ABUTMENT EXCAVATION DIAGRAM, SEE SHT. 81.
 - FOR LOCATION OF PERF. PIPE UNDERDRAIN, SEE SHT. 81.
 - FOR SLAB DETAILS AT ABUT. BKWLL., SEE SHT. 89.
 - FOR BAR LIST, SEE SHT. 79.
 - FOR PEDESTAL DETAILS, SEE SHT. 78.
 - ALL EXPOSED EDGES SHALL BE CHAMFERED 3/4" UNLESS SHOWN OR NOTED OTHERWISE.
 - SEE STANDARD HP1-2 FOR PILE ENCASEMENT DETAILS.



GROSSMAN & KEITH
ENGINEERING COMPANY
10408 GREENBRIAR PL., OKLA. CITY OK. 73159
PH. 691-3213 FAX 691-3214
CA. #74 EXPIRES 06/30/2016

DESIGN		U.S. 277 OVER DEEP RED CREEK OVERFLOW BRIDGE "C" ABUTMENT DETAILS (5 OF 8)	COTTON COUNTY
DRAWN			
CHECKED			
APPROVED			
SQUAD			
G/K ENGR.	JOB PIECE NO. 28036(04)	SHEET NO. 77	

X:\guernsey\EC-1360\Struc\Bridge_C\ABUT2-1.dgn 6/2/2016