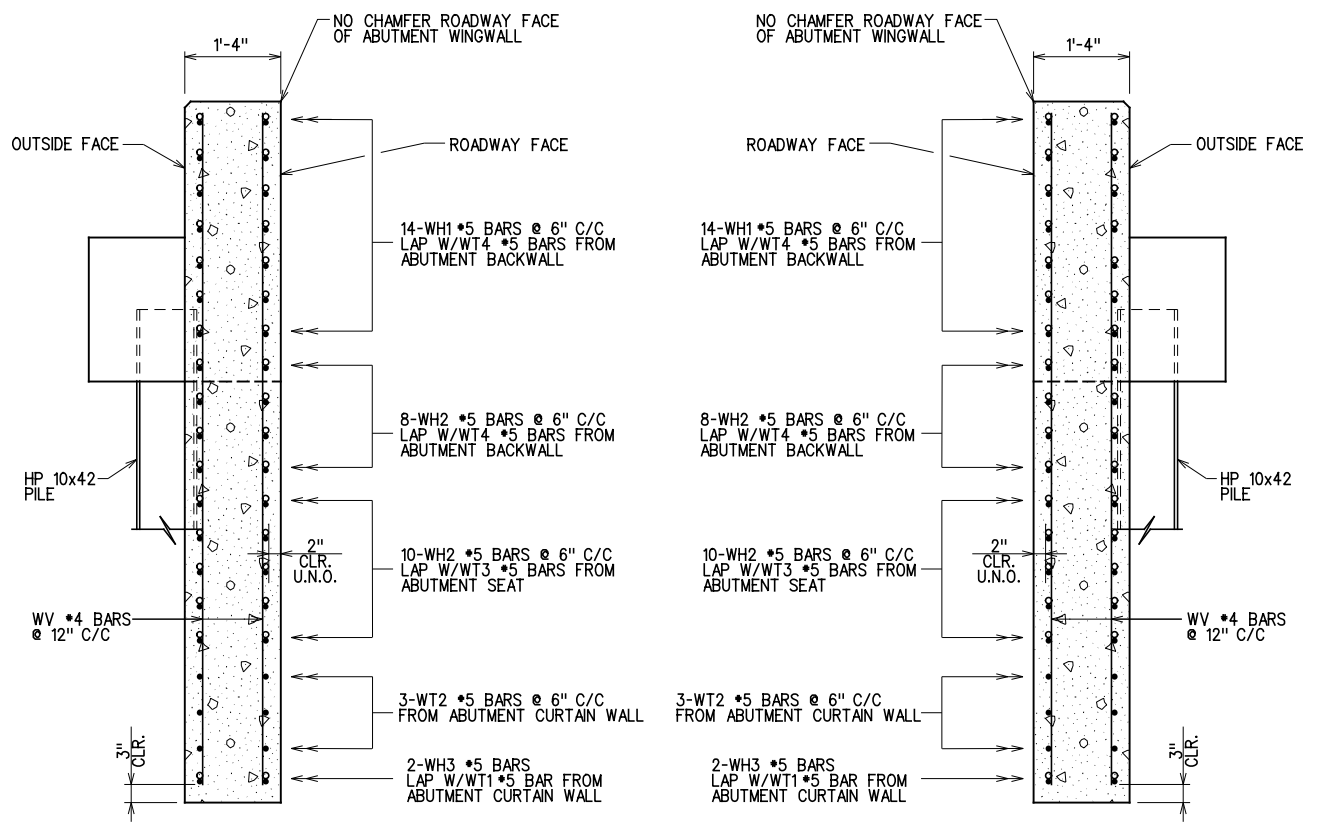


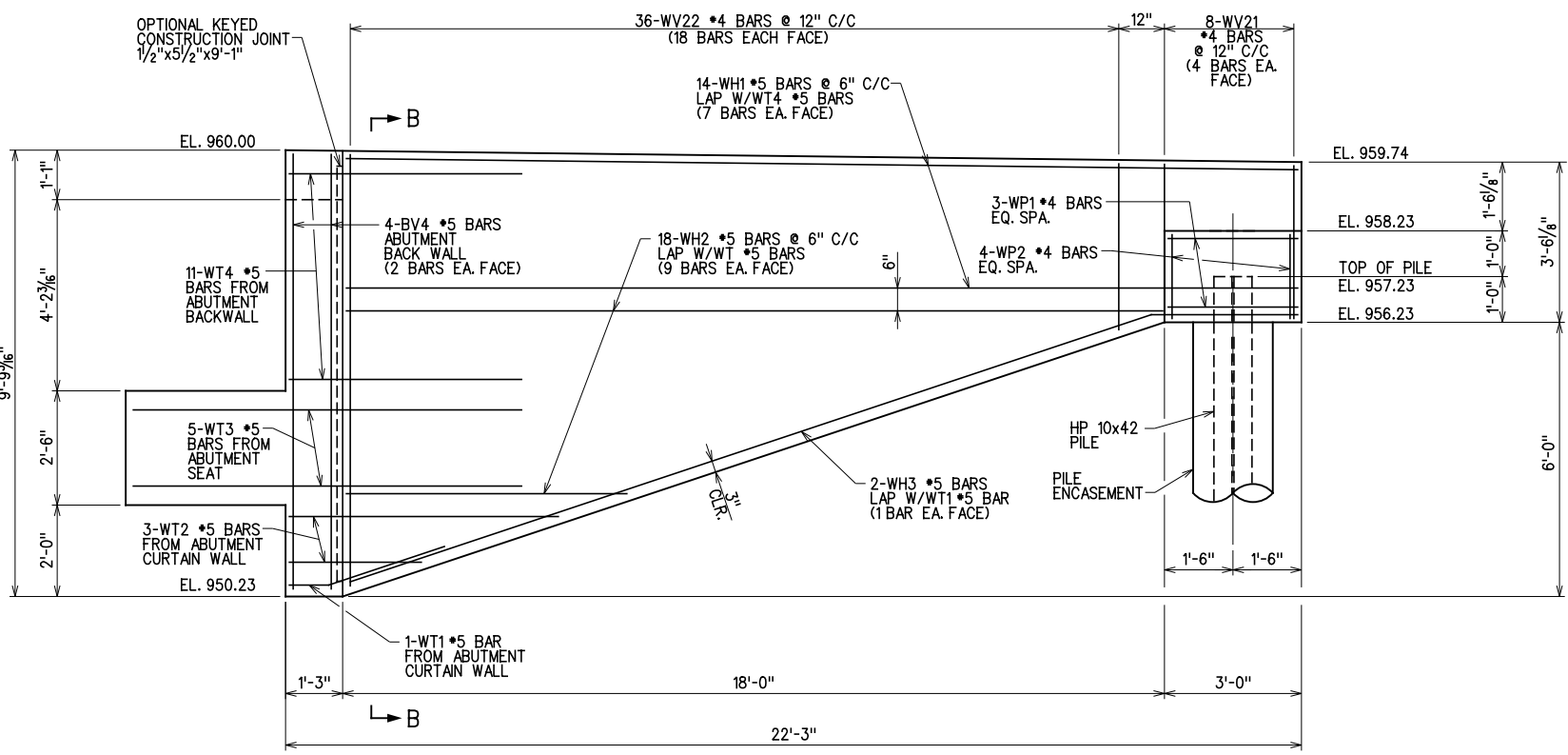
ABUTMENT NO. 1 - EAST WING



SECTION A-A

SECTION B-B

NOTE: PILE ENCASEMENT NOT SHOWN FOR CLARITY.



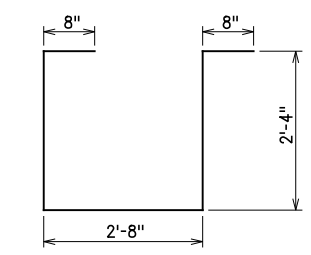
ABUTMENT NO. 1 - WEST WING

ABUTMENT WING BAR LIST						
EAST WING						
MARK	NO.	SIZE	FORM	LENGTH	LENGTH VARIATION	
EPOXY COATED REINFORCING						
WH1	14	#5	STR.	20'-8"		
① WH2	18	#5	STR.	11'-9" (AVG.)	5'-9" TO 17'-9"	
WH3	2	#5	BNT.	21'-7"		
WV11	8	#4	STR.	2'-10"		
② WV12	36	#4	STR.	6'-1" (AVG.)	3'-2" TO 9'-0"	
WP1	3	#4	BNT.	8'-8"		
WP2	4	#4	STR.	1'-7"		

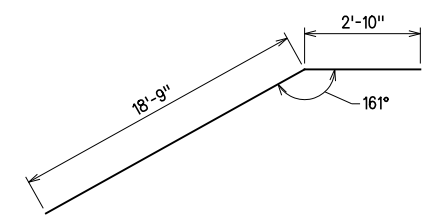
- ① 2 SETS OF 9 BARS
- ② 2 SETS OF 18 BARS

ABUTMENT WING BAR LIST						
WEST WING						
MARK	NO.	SIZE	FORM	LENGTH	LENGTH VARIATION	
EPOXY COATED REINFORCING						
WH1	14	#5	STR.	20'-8"		
① WH2	18	#5	STR.	11'-9" (AVG.)	5'-9" TO 17'-9"	
WH3	2	#5	BNT.	21'-7"		
WV21	8	#4	STR.	3'-1"		
② WV22	36	#4	STR.	6'-4" (AVG.)	3'-5" TO 9'-3"	
WP1	3	#4	BNT.	8'-8"		
WP2	4	#4	STR.	1'-7"		

- ① 2 SETS OF 9 BARS
- ② 2 SETS OF 18 BARS



WP1 - #4 BAR x 8'-8"



WH3 - #5 BAR x 21'-7"



BAR BENDING DIAGRAMS  
(ALL DIMENSIONS ARE OUT TO OUT)

**GROSSMAN & KEITH**  
ENGINEERING COMPANY  
10408 GREENBRIAR PL., OKLA. CITY OK. 73159  
PH. 691-3213 FAX 691-3214  
CA. #74 EXPIRES 06/30/2016

DESIGN		ABUTMENT NO. 1	

U.S. 277 OVER DEEP RED CREEK OVERFLOW COTTON COUNTY  
BRIDGE "C"  
ABUTMENT DETAILS (4 OF 8)

SQUAD G/K ENGR. JOB PIECE NO. 28036(04) SHEET NO. 76

X:\quernsey\EC-1360\Struc\Bridge\_C\ABUT1-3.dgn 6/2/2016