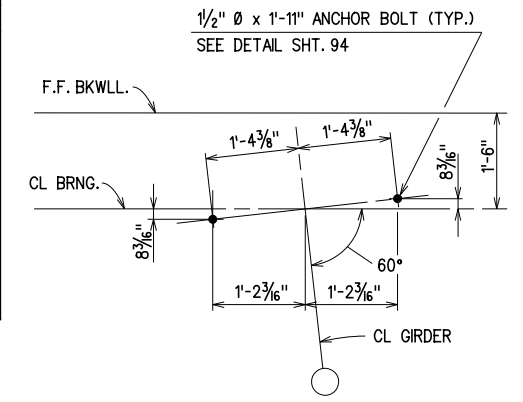


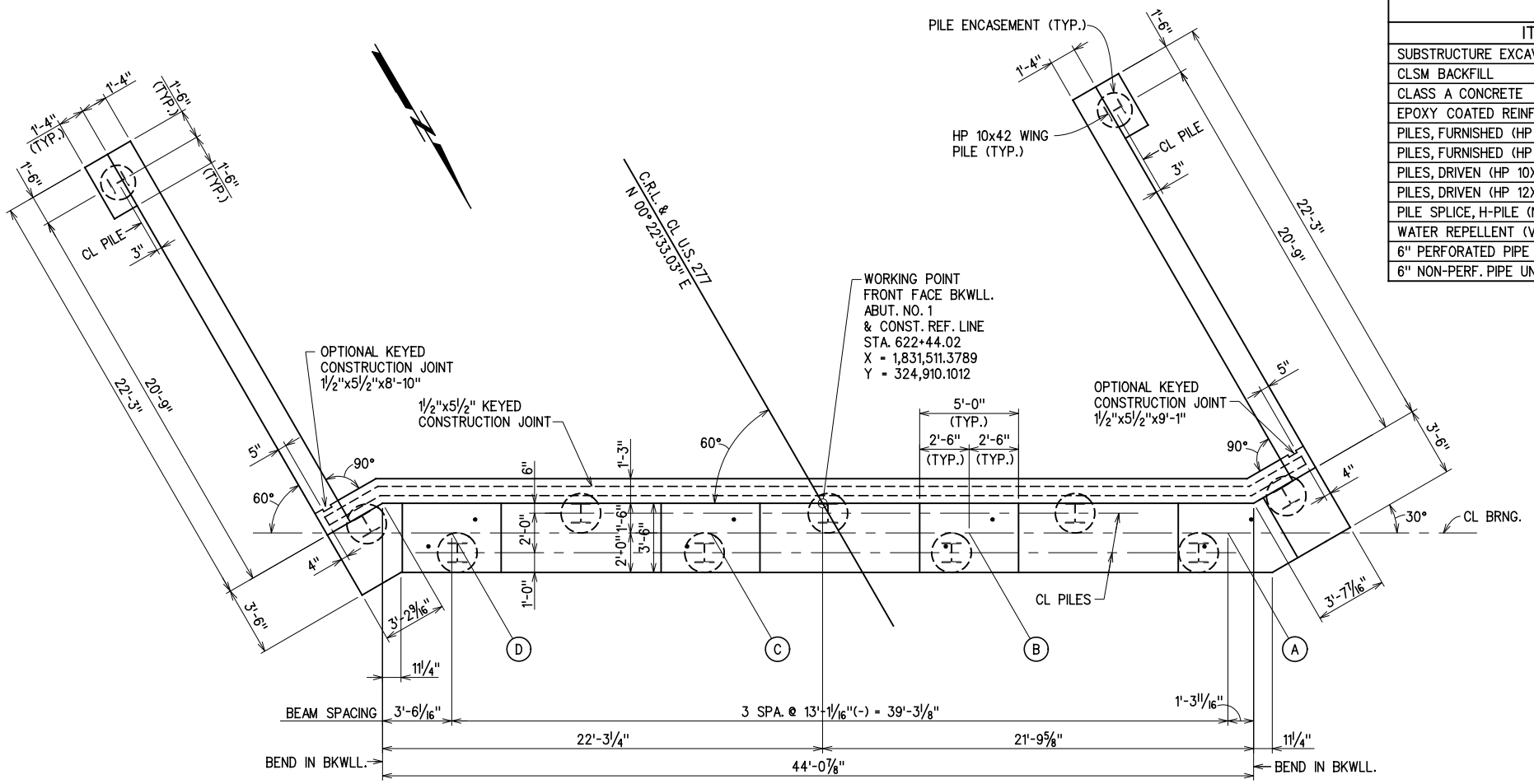
ABUTMENT QUANTITIES

ITEM	UNIT	ABUT. 1	ABUT. 2	TOTAL
SUBSTRUCTURE EXCAVATION COMMON	C.Y.	115.0	120.0	235.0
CLSM BACKFILL	C.Y.	122.0	125.0	247.0
CLASS A CONCRETE	C.Y.	50.4	51.2	101.6
EPOXY COATED REINFORCING STEEL	LB.	6,580.0	6,610.0	13,190.0
PILES, FURNISHED (HP 10X42)	L.F.	84.0	56.0	140.0
PILES, FURNISHED (HP 12X53)	L.F.	342.0	220.0	562.0
PILES, DRIVEN (HP 10X42)	L.F.	84.0	56.0	140.0
PILES, DRIVEN (HP 12X53)	L.F.	342.0	220.0	562.0
PILE SPLICE, H-PILE (NON-BIDDABLE)	EA.	---	---	1.0
WATER REPELLENT (VISUALLY INSPECTED)	S.Y.	63.0	63.0	126.0
6" PERFORATED PIPE UNDERDRAIN ROUND	L.F.	48.0	48.0	96.0
6" NON-PERF. PIPE UNDERDRAIN RND.	L.F.	30.0	30.0	60.0

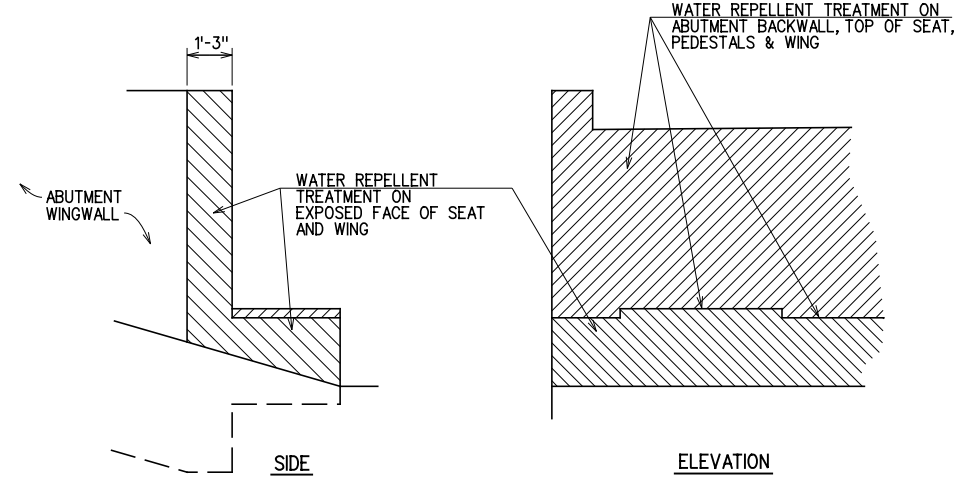


ANCHOR BOLT LAYOUT

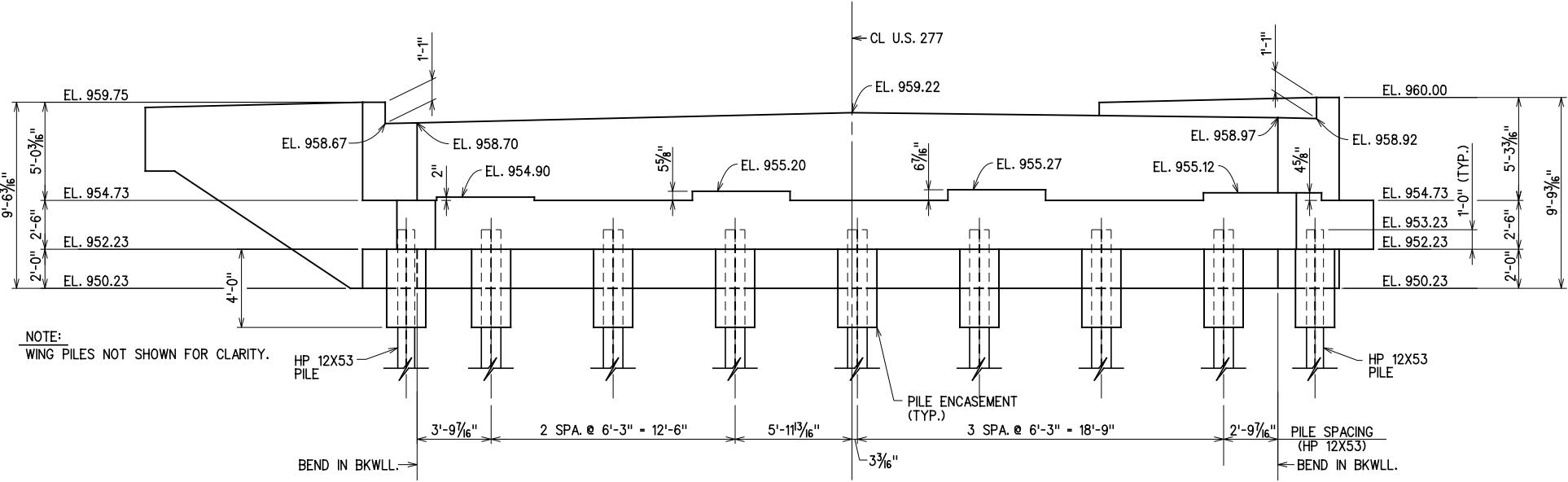
- NOTES:
1. FOR WINGWALL ELEVATIONS, SEE SHT. 76.
 2. FOR ABUTMENT EXCAVATION DIAGRAM, SEE SHT. 81.
 3. FOR LOCATION OF PERF. PIPE UNDERDRAIN, SEE SHT. 81.
 4. FOR SLAB DETAILS AT ABUT. BKWLL., SEE SHT. 89.
 5. FOR BAR LIST, SEE SHT. 75.
 6. FOR PEDESTAL DETAILS, SEE SHT. 74.
 7. ALL EXPOSED EDGES SHALL BE CHAMFERED 3/4" UNLESS SHOWN OR NOTED OTHERWISE.
 8. SEE STANDARD HP-1-2 FOR PILE ENCASEMENT DETAILS.



PLAN



PENETRATING WATER REPELLENT TREATMENT



ELEVATION

NOTE:
WING PILES NOT SHOWN FOR CLARITY.

GROSSMAN & KEITH
ENGINEERING COMPANY
10408 GREENBRIAR PL., OKLA. CITY OK. 73159
PH. 691-3213 FAX 691-3214
CA. #74 EXPIRES 06/30/2016

ABUTMENT NO. 1
DESIGN
DRAWN
CHECKED
APPROVED
SQUAD G/K ENGR.

U.S. 277 OVER DEEP RED CREEK OVERFLOW COTTON COUNTY BRIDGE "C"
ABUTMENT DETAILS (1 OF 8)
JOB PIECE NO. 28036(04) SHEET NO. 73



X:\guernsey\EC-1360\Struc\Bridge_C\ABUT1-1.dgn 6/2/2016