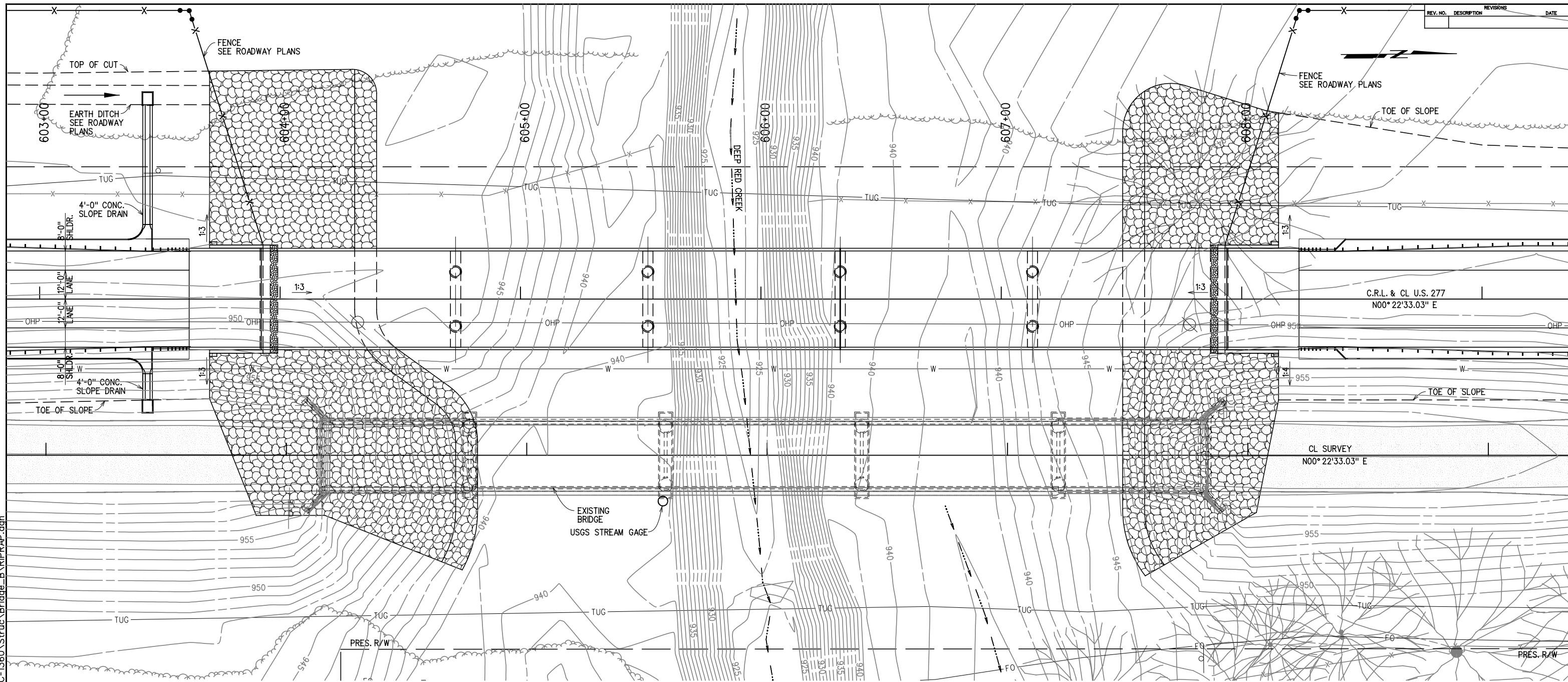


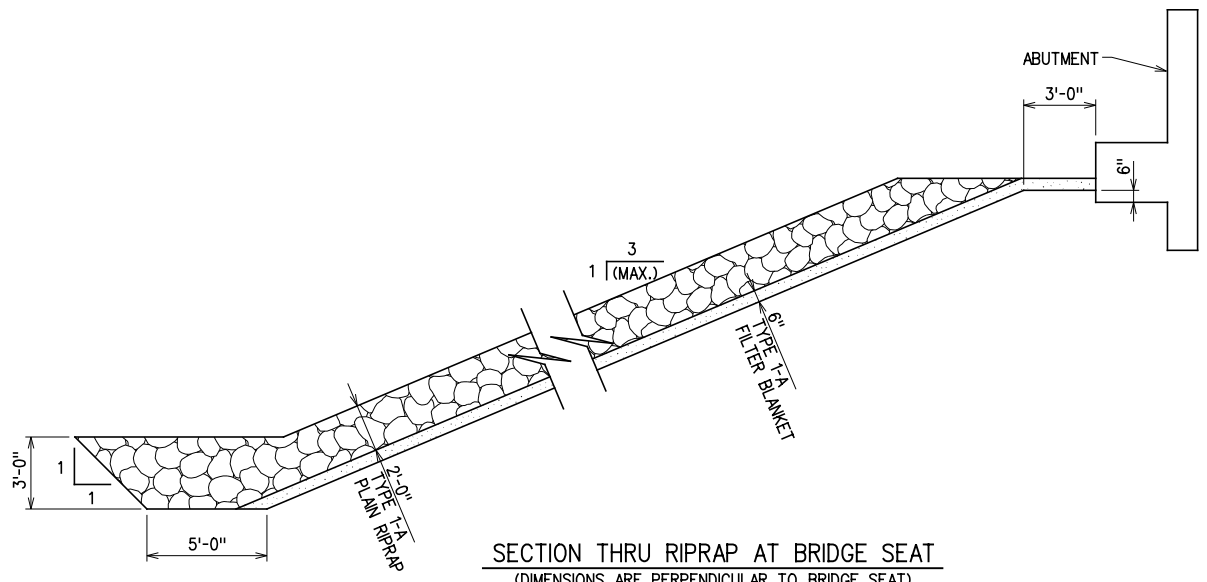
X:\guernsey\EC-1360\Struc\Bridge_B\RIPRAP.dgn

6/2/2016

REV. NO.	DESCRIPTION	REVISIONS	DATE



PLAN



SECTION THRU RIPRAP AT BRIDGE SEAT
(DIMENSIONS ARE PERPENDICULAR TO BRIDGE SEAT)

RIPRAP QUANTITIES				
ITEM	UNIT	ABUT. 1	ABUT. 2	TOTAL
TYPE 1-A PLAIN RIPRAP	TON	1,855.0	1,365.0	3,220.0
TYPE 1-A FILTER BLANKET	TON	410.0	295.0	705.0



GROSSMAN & KEITH
ENGINEERING COMPANY
10408 GREENBRIAR PL., OKLA. CITY OK. 73159
PH. 691-3213 FAX 691-3214
CA. #74 EXPIRES 06/30/2016

DESIGN		U.S. 277 OVER DEEP RED CREEK BRIDGE "B"	COTTON COUNTY
DRAWN			
CHECKED			
APPROVED			
SQUAD	G/K ENGR.		
		JOB PIECE NO. 28036(04)	SHEET NO. 66

RIPRAP DETAILS