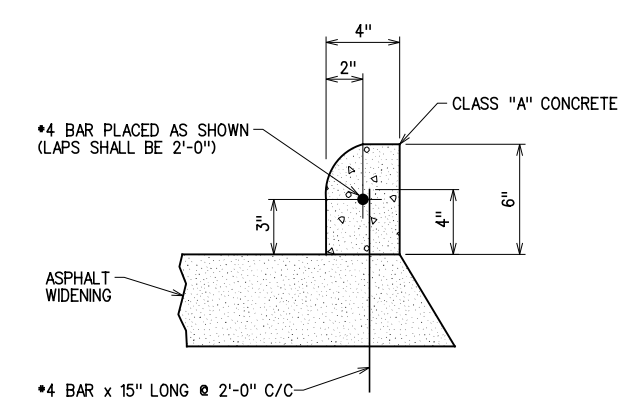
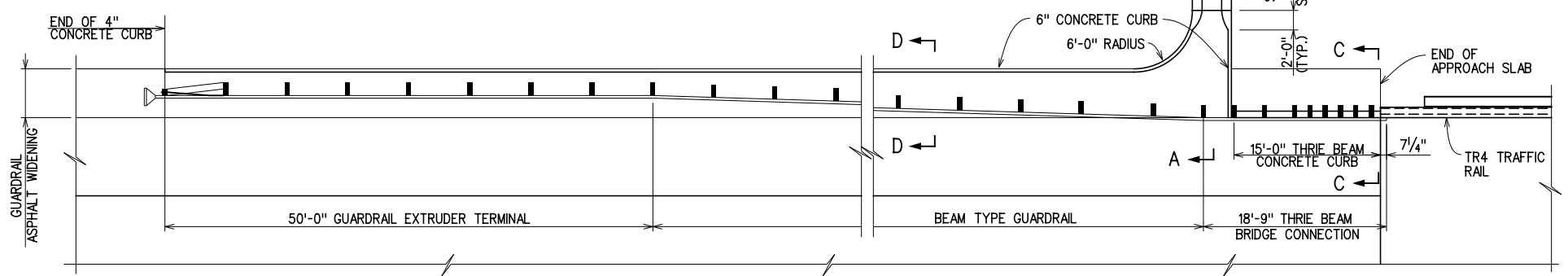


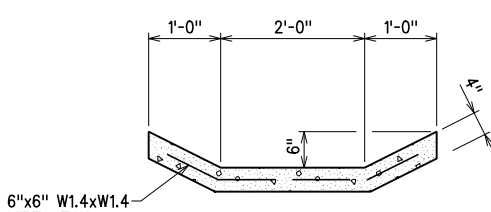
SECTION A-A
 ① SLOPE TO MATCH SLOPE OF HEADER



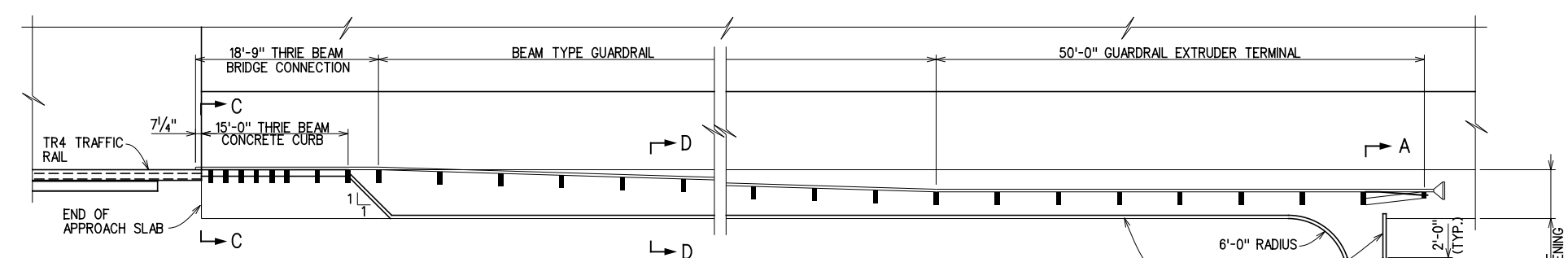
DETAIL OF CONCRETE CURB



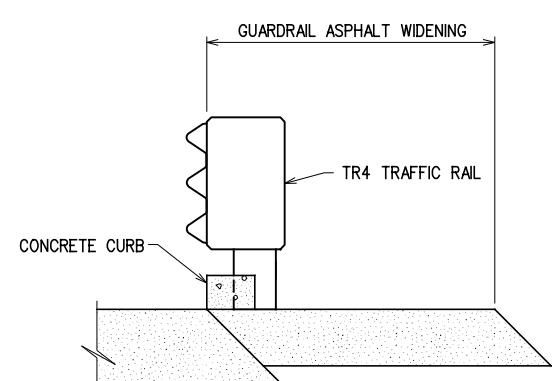
SOUTH END OF BRIDGE, EAST AND WEST SIDE OF ROADWAY
 WEST SIDE OF ROADWAY SHOWN, EAST SIDE IS OPPOSITE HAND



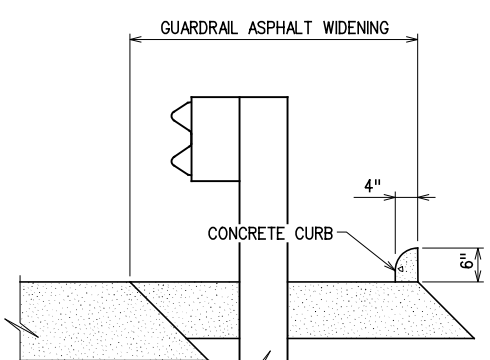
SECTION B-B



NORTH END OF BRIDGE, EAST AND WEST SIDE OF ROADWAY
 EAST SIDE OF ROADWAY SHOWN, WEST SIDE IS OPPOSITE HAND



SECTION C-C



SECTION D-D

NOTES

SLOPE DRAINS, SPLASH BASINS, AND CURBS SHALL BE CONSTRUCTED USING CLASS "A" CONCRETE AS SHOWN ON THIS SHEET. ALL COSTS OF THE SLOPE DRAINS, SPLASH BASINS AND CURBS INCLUDING CONCRETE, REINFORCING STEEL BARS AND WIRE MESH, EXCAVATION, BACKFILLING, MATERIAL, LABOR, EQUIPMENT AND INCIDENTALS SHALL BE INCLUDED IN THE ROADWAY PAY ITEM FOR "CLASS A CONCRETE".

ASPHALT WIDENING SHALL BE IN ACCORDANCE WITH STANDARDS THRI-1, GHW1-1 AND SKT-1 EXCEPT AS SHOWN ON THIS SHEET. ALL COSTS OF ASPHALT WIDENING SHALL BE INCLUDED IN ROADWAY PAY ITEMS.



GROSSMAN & KEITH
 ENGINEERING COMPANY
 10408 GREENBRIAR PL., OKLA. CITY OK. 73159
 PH. 691-3213 FAX 691-3214
 CA. #74 EXPIRES 06/30/2016

DESIGN	
DRAWN	
CHECKED	
APPROVED	
SQUAD	G/K ENGR.

U.S. 277 OVER DEEP RED CREEK	COTTON COUNTY
BRIDGE "B"	
DETAIL OF DRAINS AT END OF BRIDGE	
JOB PIECE NO. 28036(04)	SHEET NO. 65

X:\guernsey\EC-1360\Struc\Bridge_B\DRAINS.dgn 6/2/2016