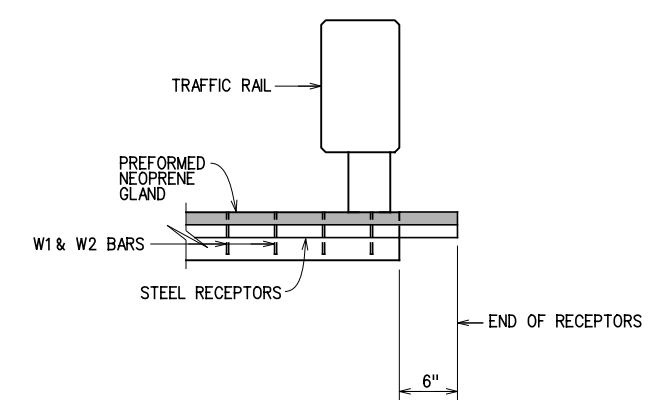


PIER NO. 3
DECK JOINT DETAIL
SCALE: NONE

EXPANSION JOINT OPENING	
PIER NO. 3	
TEMP.	WIDTH ①
25° - 28°	3 1/2"
29° - 32°	3 3/8"
33° - 36°	3 1/4"
37° - 40°	3 1/8"
41° - 45°	3"
46° - 49°	2 7/8"
50° - 53°	2 3/4"
54° - 57°	2 5/8"
58° - 61°	2 1/2"
62° - 65°	2 3/8"
66° - 69°	2 1/4"
70° - 73°	2 1/8"
74° - 77°	2"
78° - 81°	1 7/8"
82° - 85°	1 3/4"
86° - 89°	1 5/8"
90° - 93°	1 1/2"
94° - 97°	1 3/8"
98° - 101°	1 1/4"
102° - 105°	1 1/8"

① JOINT SETTING WIDTHS ARE MEASURED PERPENDICULAR TO THE JOINT



NOTE:
SEE STANDARDS EJ-SQ AND EJ-DTL FOR ADDITIONAL JOINT DETAILS.

SECTION AT TRAFFIC RAIL
WITH OPENINGS

X:\guernsey\EC-1360\Struc\Bridge_B\EXPJT.dgn

6/2/2016



GROSSMAN & KEITH
ENGINEERING COMPANY
10408 GREENBRIAR PL., OKLA. CITY OK. 73159
PH. 691-3213 FAX 691-3214
CA. #74 EXPIRES 06/30/2016

DESIGN	
DRAWN	
CHECKED	
APPROVED	
SQUAD	G/K ENGR.

U.S. 277 OVER DEEP RED CREEK
BRIDGE "B"
COTTON COUNTY
EXPANSION JOINT DETAILS
JOB PIECE NO. 28036(04) SHEET NO. 64