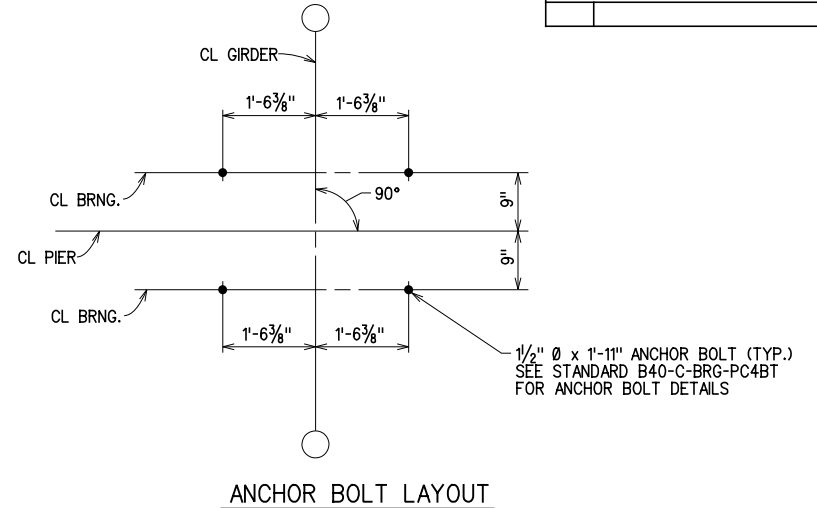


BAR LIST PIER NO. 1				
EPOXY COATED REINFORCING				
MARK	NO.	SIZE	FORM	LENGTH
BH1	9	*10	BNT.	42'-6"
BH2	9	*10	STR.	39'-8"
BH3	8	*6	STR.	39'-8"
BH4	8	*4	BNT.	5'-10"
P1	20	*4	BNT.	7'-8"
P2	24	*4	BNT.	6'-11"
S1	76	*5	BNT.	15'-1"
PLAIN REINFORCING				
CS1	2	W20	SPR.	177'-0"
D1	40	*9	STR.	11'-8"
CT1	12	*4	BNT.	12'-6"
DS1	2	W20	SPR.	1,483'-0"
DV1	48	*10	STR.	57'-6"



① DRILLED SHAFT REINFORCEMENT TO BE INCLUDED IN PRICE BID PER L.F. OF 60" DIA. DRILLED SHAFT.

BAR LIST PIER NO. 2				
EPOXY COATED REINFORCING				
MARK	NO.	SIZE	FORM	LENGTH
BH1	9	*10	BNT.	42'-6"
BH2	9	*10	STR.	39'-8"
BH3	8	*6	STR.	39'-8"
BH4	8	*4	BNT.	5'-10"
P1	20	*4	BNT.	7'-8"
P2	24	*4	BNT.	6'-11"
S1	76	*5	BNT.	15'-1"
PLAIN REINFORCING				
CS2	2	W20	SPR.	294'-0"
D1	40	*9	STR.	11'-8"
CT1	12	*4	BNT.	12'-6"
DS2	2	W20	SPR.	1,282'-0"
DV2	48	*10	STR.	49'-6"

BAR LIST PIER NO. 3				
EPOXY COATED REINFORCING				
MARK	NO.	SIZE	FORM	LENGTH
BH1	9	*10	BNT.	42'-6"
BH2	9	*10	STR.	39'-8"
BH3	8	*6	STR.	39'-8"
BH4	8	*4	BNT.	5'-10"
P1	20	*4	BNT.	7'-8"
P2	24	*4	BNT.	6'-11"
S1	76	*5	BNT.	15'-1"
PLAIN REINFORCING				
CS3	2	W20	SPR.	287'-0"
D1	40	*9	STR.	11'-8"
CT1	12	*4	BNT.	12'-6"
DS3	2	W20	SPR.	1,257'-0"
DV3	48	*10	STR.	48'-6"

BAR LIST PIER NO. 4				
EPOXY COATED REINFORCING				
MARK	NO.	SIZE	FORM	LENGTH
BH1	9	*10	BNT.	42'-6"
BH2	9	*10	STR.	39'-8"
BH3	8	*6	STR.	39'-8"
BH4	8	*4	BNT.	5'-10"
P1	20	*4	BNT.	7'-8"
P2	24	*4	BNT.	6'-11"
S1	76	*5	BNT.	15'-1"
PLAIN REINFORCING				
CS4	2	W20	SPR.	236'-0"
D1	40	*9	STR.	11'-8"
CT1	12	*4	BNT.	12'-6"
DS4	2	W20	SPR.	1,483'-0"
DV4	48	*10	STR.	57'-6"

① DRILLED SHAFT REINFORCEMENT TO BE INCLUDED IN PRICE BID PER L.F. OF 60" DIA. DRILLED SHAFT.

① DRILLED SHAFT REINFORCEMENT TO BE INCLUDED IN PRICE BID PER L.F. OF 60" DIA. DRILLED SHAFT.

① DRILLED SHAFT REINFORCEMENT TO BE INCLUDED IN PRICE BID PER L.F. OF 60" DIA. DRILLED SHAFT.

PIER ELEVATIONS				
	PIER 1	PIER 2	PIER 3	PIER 4
EL. A	956.55	956.15	955.75	955.35
EL. B	956.78	956.38	955.98	955.58
EL. C	956.38	955.98	955.58	955.18
EL. D	951.38	950.98	950.58	950.18
EL. E	944.00	938.00	938.00	940.00
EL. F	886.00	888.00	889.00	882.00
DIM. A	7'-4 3/16"	12'-11 3/4"	12'-6 5/16"	10'-2 3/16"
DIM. B	58'-0"	50'-0"	49'-0"	58'-0"
DIM. C	15'-0"	10'-0"	10'-0"	15'-0"

PIER QUANTITIES						
ITEM	UNIT	PIER 1	PIER 2	PIER 3	PIER 4	TOTAL
CLASS A CONCRETE	C.Y.	39.1	44.3	43.9	41.7	169.0
REINFORCING STEEL	LB.	240.0	400.0	390.0	320.0	1,350.0
EPOXY COATED REINFORCING STEEL	LB.	6,700.0	7,460.0	7,420.0	7,090.0	28,670.0
① WATER REPELLENT (VISUALLY INSPECTED)	S.Y.	110.0	126.0	125.0	118.0	479.0
DRILLED SHAFTS 60" DIAMETER	L.F.	116.0	100.0	98.0	116.0	430.0
CROSSHOLE SONIC LOGGING	EA.	---	---	---	---	2.0

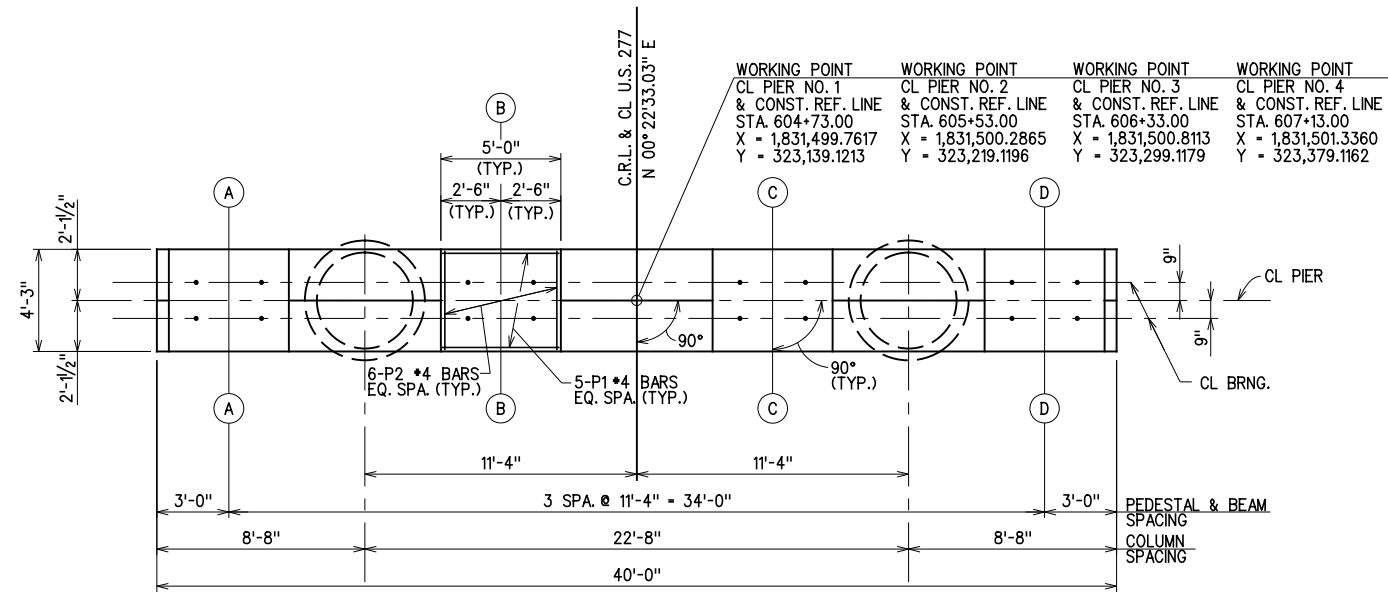
① APPLIED TO ALL EXPOSED SURFACES OF PIER CAP AND COLUMNS



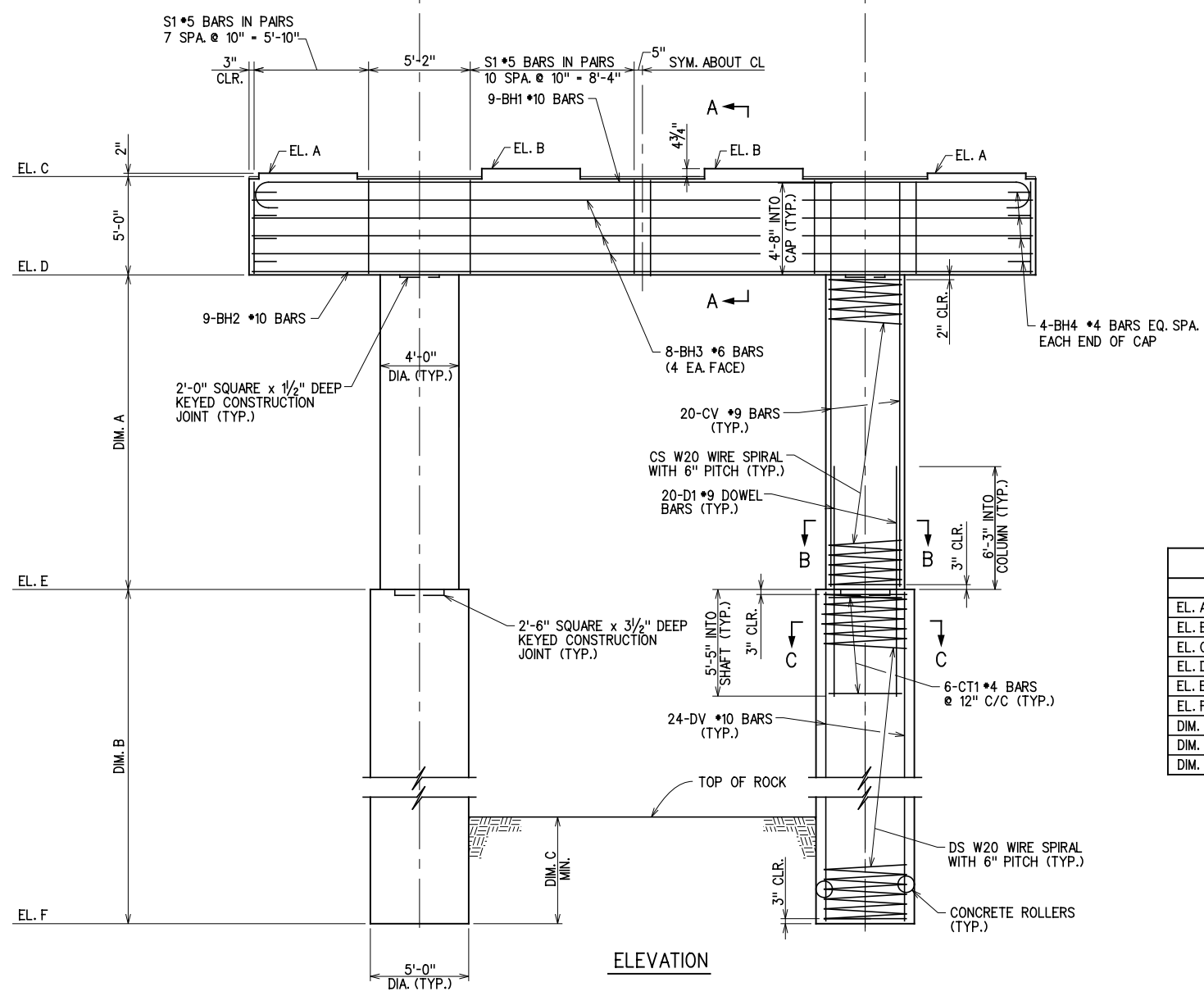
**GROSSMAN & KEITH**  
ENGINEERING COMPANY  
10408 GREENBRIAR PL., OKLA. CITY OK. 73159  
PH. 691-3213 FAX 691-3214  
CA. #74 EXPIRES 06/30/2016

DESIGN		U.S. 277 OVER DEEP RED CREEK BRIDGE "B"	COTTON COUNTY
DRAWN			
CHECKED			
APPROVED			
SQUAD	G/K ENGR.		
		JOB PIECE NO. 28036(04)	SHEET NO. 61

NOTES:  
1. FOR BAR BENDING DIAGRAM SEE SHT. 62.  
2. FOR SECTIONS SEE SHT. 62.



PLAN



ELEVATION

X:\quernsey\EC-1360\Struc\Bridge\_B\PIER1.dgn 6/2/2016