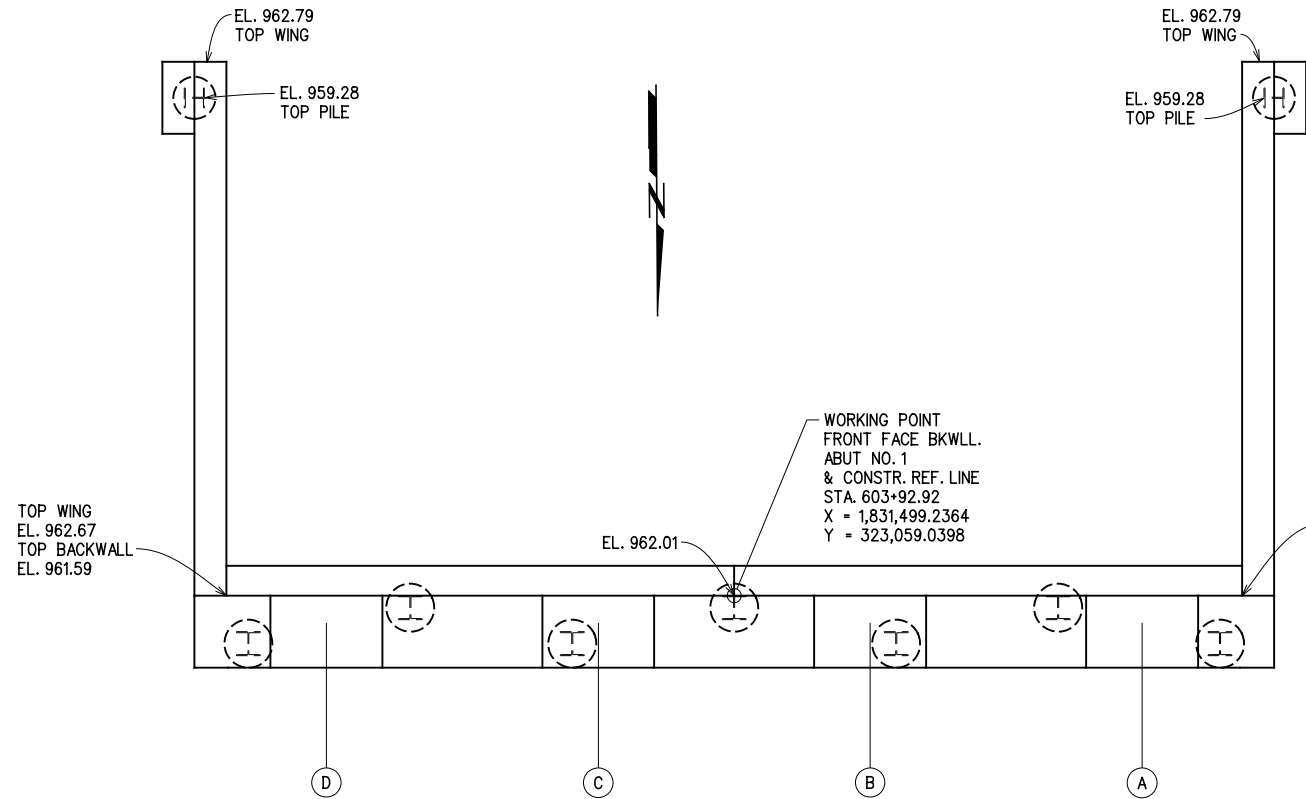
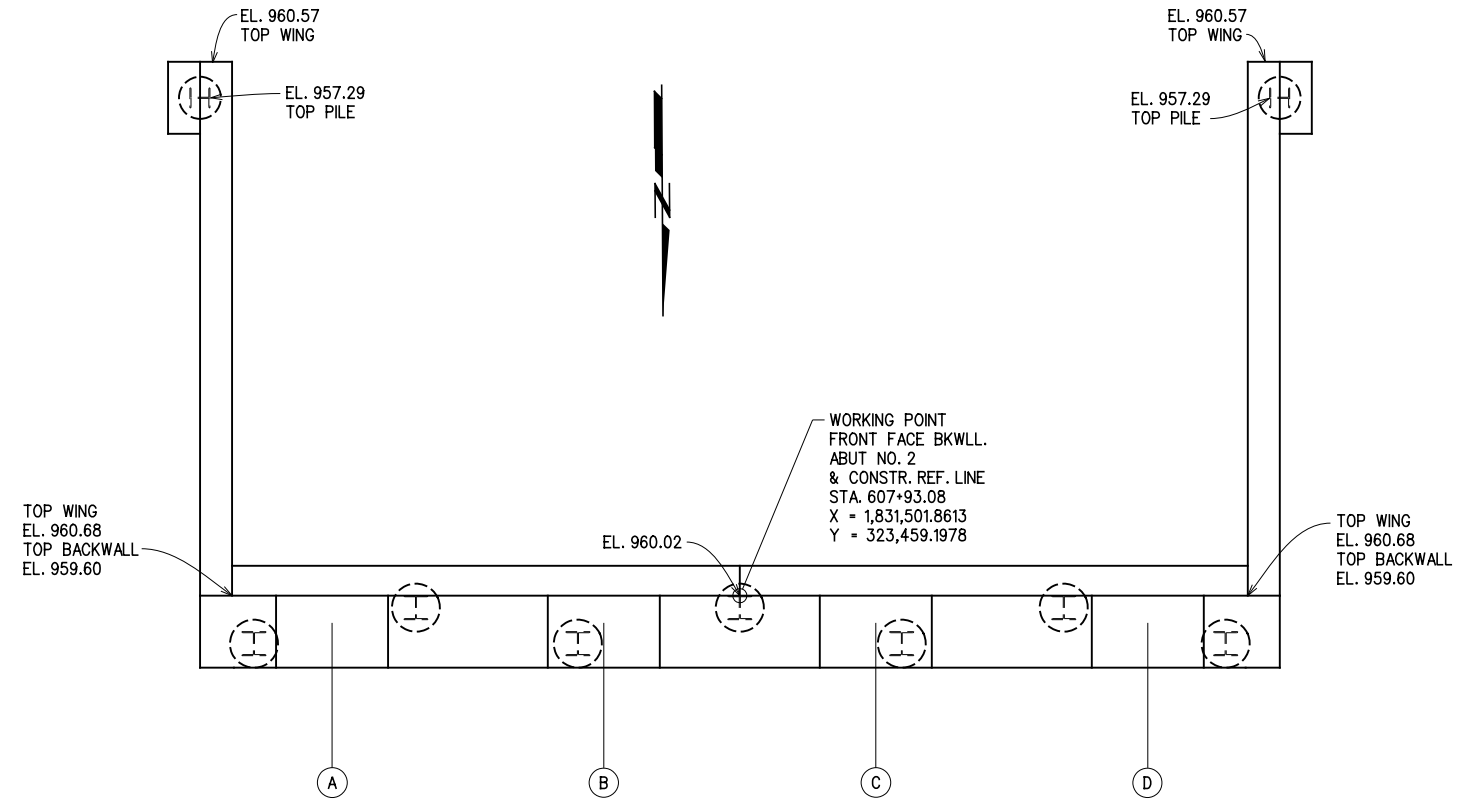


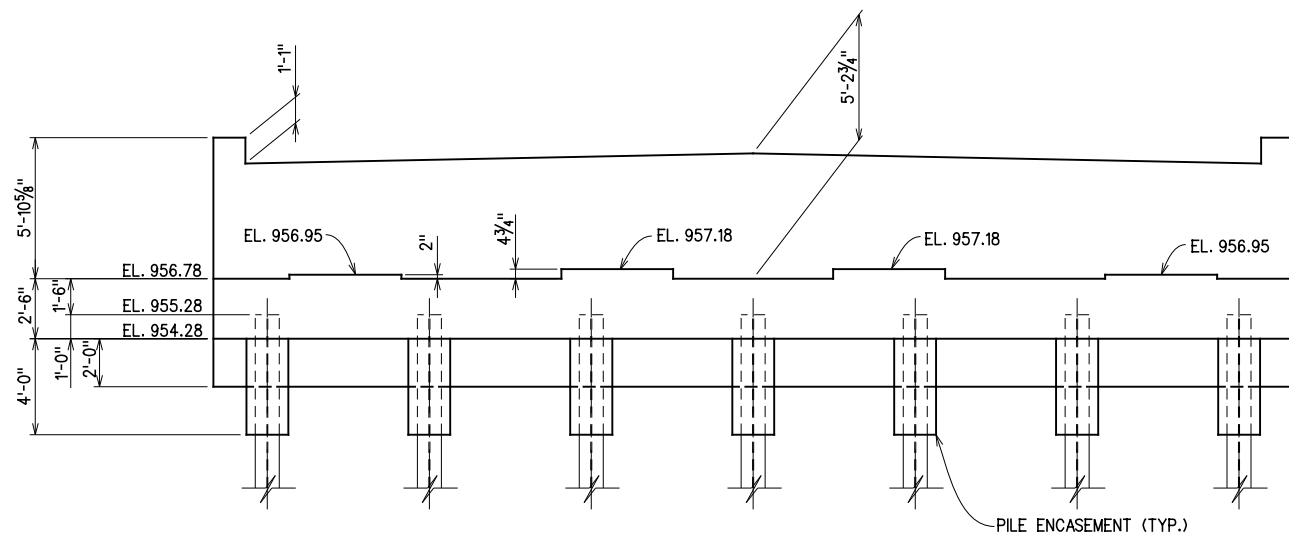
REV. NO.	DESCRIPTION	REVISIONS	DATE



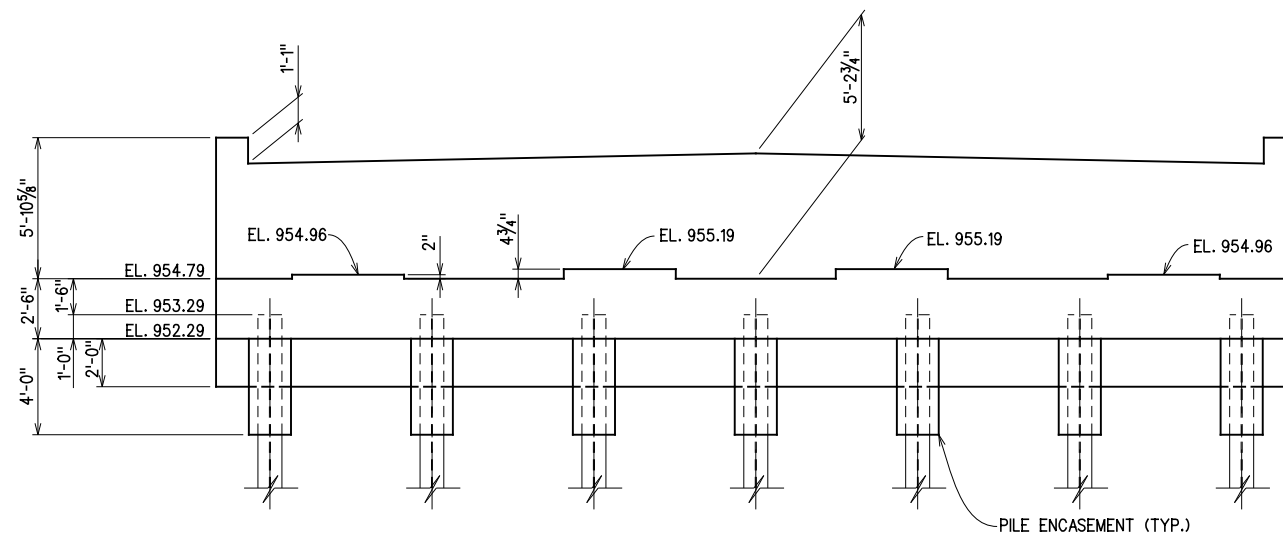
PLAN - ABUTMENT NO. 1



PLAN - ABUTMENT NO. 2



ELEVATION - ABUTMENT NO. 1



ELEVATION - ABUTMENT NO. 2

ABUTMENT QUANTITIES

ITEM	UNIT	ABUT. 1	ABUT. 2	TOTAL
SUBSTRUCTURE EXCAVATION COMMON	C.Y.	90.0	90.0	180.0
CLSM BACKFILL	C.Y.	103.0	103.0	206.0
CLASS A CONCRETE	C.Y.	48.0	48.0	96.0
EPOXY COATED REINFORCING STEEL	LB.	6,110.0	6,110.0	12,220.0
PILES, FURNISHED (HP 10X42)	L.F.	124.0	122.0	246.0
PILES, FURNISHED (HP 12X53)	L.F.	410.0	403.0	813.0
PILES, DRIVEN (HP 10X42)	L.F.	124.0	122.0	246.0
PILES, DRIVEN (HP 12X53)	L.F.	410.0	403.0	813.0
PILE SPLICE, H-PILE (NON-BIDDABLE)	EA.	---	---	1.0
WATER REPELLENT (VISUALLY INSPECTED)	S.Y.	48.0	48.0	96.0
6" PERFORATED PIPE UNDERDRAIN ROUND	L.F.	42.0	42.0	84.0
6" NON-PERF. PIPE UNDERDRAIN RND.	L.F.	30.0	30.0	60.0

NOTES:

- SEE STANDARD B40-C-ABUT-PC4-1 FOR ABUTMENT DETAILS.
SEE STANDARD B40-C-ABUT-PC4-2 FOR ABUTMENT WINGWALL DETAILS.
- SEE STANDARD B40-C-ABUT-MISC FOR ABUTMENT EXCAVATION AND PIPE UNDERDRAIN DETAILS.
- SEE STANDARD HP1-2 FOR PILE ENCASEMENT DETAILS.

GROSSMAN & KEITH
ENGINEERING COMPANY
10408 GREENBRIAR PL., OKLA. CITY OK. 73159
PH. 691-3213 FAX 691-3214
CA. #74 EXPIRES 06/30/2016



ABUTMENT NO. 1 & 2

DESIGN		U.S. 277 OVER DEEP RED CREEK	COTTON COUNTY
DRAWN		BRIDGE "B"	
CHECKED		ABUTMENT DETAILS	
APPROVED			
SQUAD	G/K ENGR.	JOB PIECE NO. 28036(04)	SHEET NO. 60