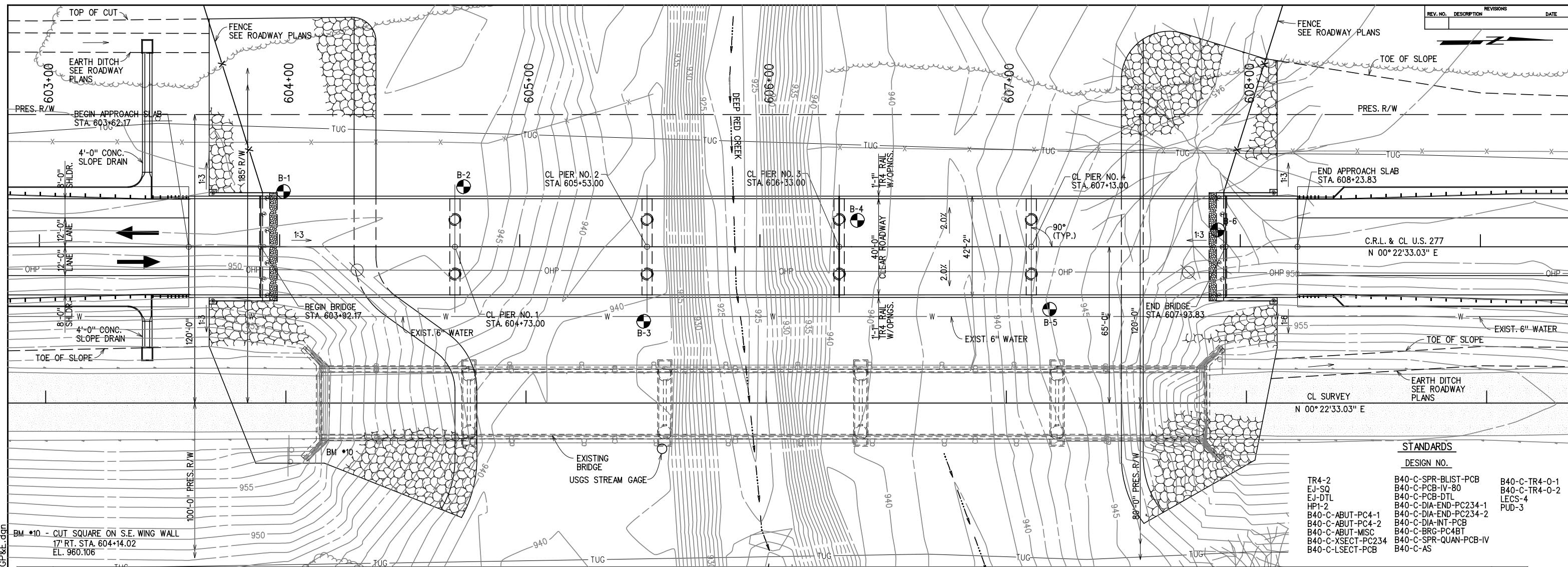
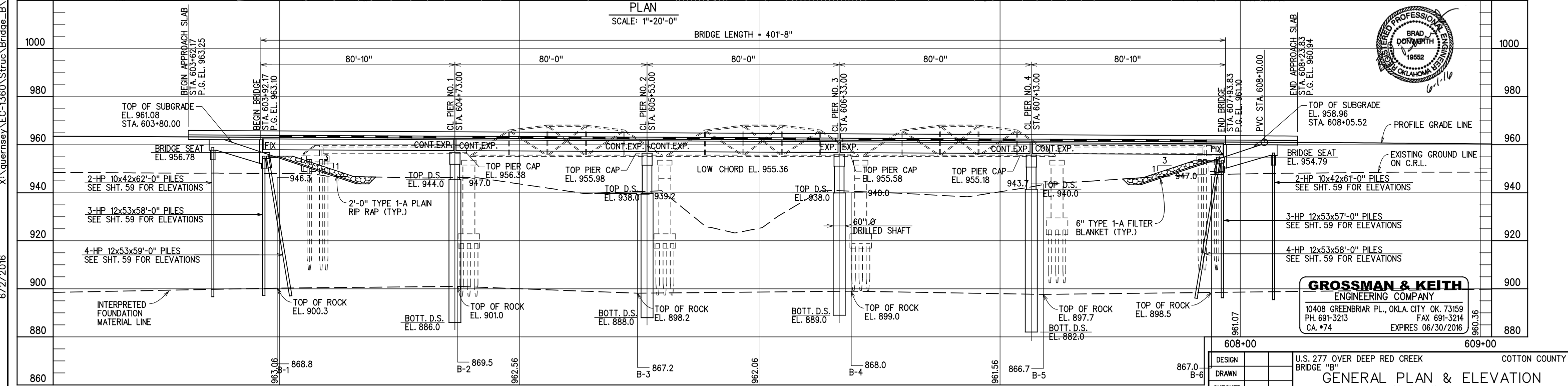


REV. NO.	DESCRIPTION	REVISIONS	DATE



**STANDARDS**

DESIGN NO.	STANDARD
TR4-2	B40-C-SPR-BLIST-PCB
EJ-SQ	B40-C-PCB-IV-80
EJ-DTL	B40-C-PCB-DTL
HP1-2	B40-C-DIA-END-PC234-1
B40-C-ABUT-PC4-1	B40-C-DIA-END-PC234-2
B40-C-ABUT-PC4-2	B40-C-DIA-INT-PCB
B40-C-ABUT-MISC	B40-C-BRC-PC4BT
B40-C-XSECT-PC234	B40-C-SPR-QUAN-PCB-IV
B40-C-LSECT-PCB	B40-C-AS
B40-C-TR4-0-1	B40-C-TR4-0-2
LECS-4	PUD-3



**GROSSMAN & KEITH**  
ENGINEERING COMPANY  
10408 GREENBRIAR PL., OKLA. CITY OK. 73159  
PH. 691-3213 FAX 691-3214  
CA. #74 EXPIRES 06/30/2016

DESIGN		U.S. 277 OVER DEEP RED CREEK	COTTON COUNTY
DRAWN		BRIDGE "B"	
CHECKED		<b>GENERAL PLAN &amp; ELEVATION</b>	
APPROVED		CONSTRUCT 5-80' TYPE IV P.C. BEAM SPANS x 40' CLEAR ROADWAY WITH CONCRETE TRAFFIC RAIL (TR4) NO SKEW, CL STATION 605+93	
SQUAD	G/K ENGR.	JOB PIECE NO.	28036(04)
			SHEET NO. 55

- NOTES:**
1. FOR FOUNDATION REPORT SEE SHTS. 57 & 58.
  2. FOR SUMMARY OF QUANTITIES SEE SHT. 56.
  3. FOR RIPRAP DETAILS SEE SHT. 66.
  4. FOR DETAIL OF DRAINS AT END OF BRIDGE SEE SHT. 65.

X:\quernsey\EC-1360\Struc\Bridge\_B\GP&E.dgn 6/2/2016