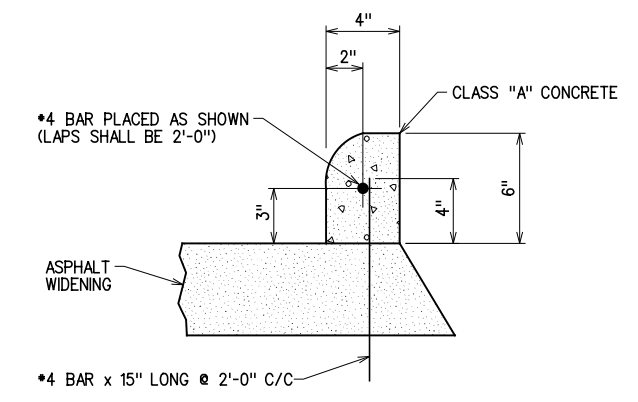
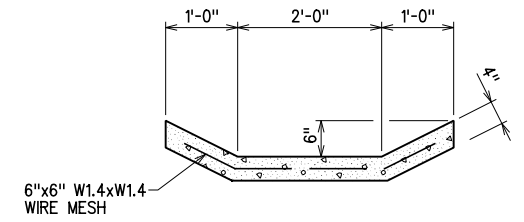


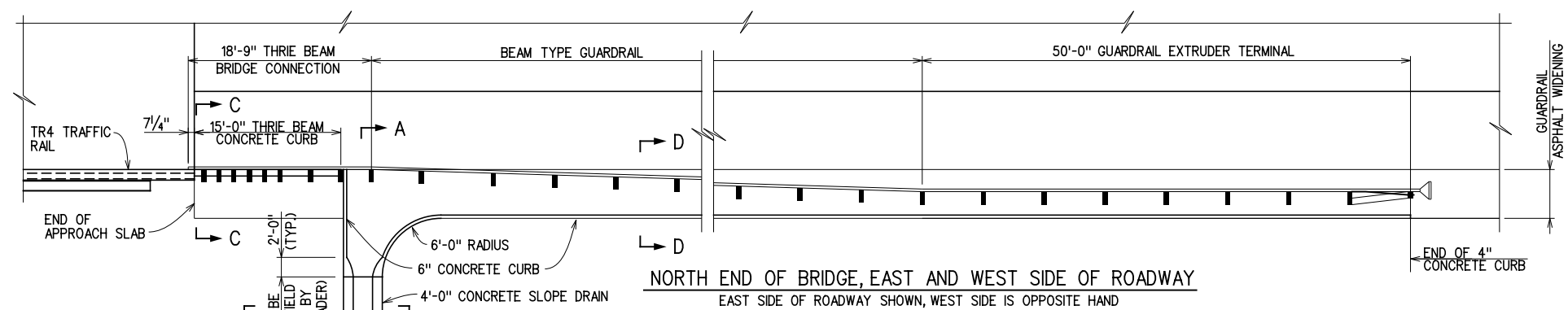
**SOUTH END OF BRIDGE, EAST AND WEST SIDE OF ROADWAY**  
WEST SIDE OF ROADWAY SHOWN, EAST SIDE IS OPPOSITE HAND



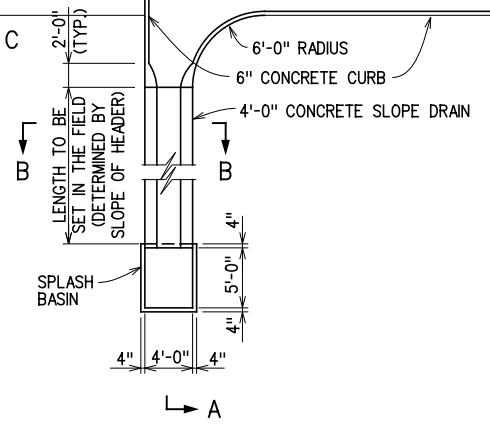
**DETAIL OF CONCRETE CURB**



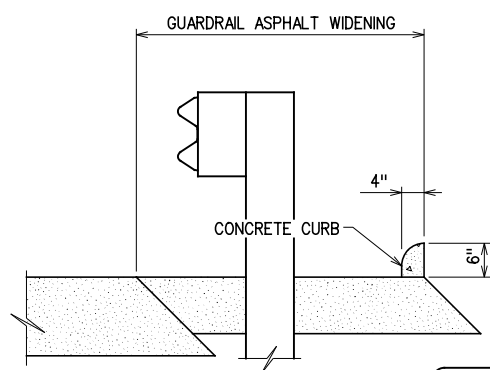
**SECTION B-B**



**NORTH END OF BRIDGE, EAST AND WEST SIDE OF ROADWAY**  
EAST SIDE OF ROADWAY SHOWN, WEST SIDE IS OPPOSITE HAND



**SECTION C-C**



**SECTION D-D**

**NOTES**

SLOPE DRAINS, SPLASH BASINS, AND CURBS SHALL BE CONSTRUCTED USING CLASS "A" CONCRETE AS SHOWN ON THIS SHEET. ALL COSTS OF THE SLOPE DRAINS, SPLASH BASINS AND CURBS INCLUDING CONCRETE, REINFORCING STEEL BARS AND WIRE MESH, EXCAVATION, BACKFILLING, MATERIAL, LABOR, EQUIPMENT AND INCIDENTALS SHALL BE INCLUDED IN THE ROADWAY PAY ITEM FOR "CLASS A CONCRETE".

ASPHALT WIDENING SHALL BE IN ACCORDANCE WITH STANDARDS THRI-1, GHW1-1 AND SKT-1 EXCEPT AS SHOWN ON THIS SHEET. ALL COSTS OF ASPHALT WIDENING SHALL BE INCLUDED IN ROADWAY PAY ITEMS.



**GROSSMAN & KEITH**  
ENGINEERING COMPANY  
10408 GREENBRIAR PL., OKLA. CITY OK. 73159  
PH. 691-3213 FAX 691-3214  
CA. #74 EXPIRES 06/30/2016

DESIGN		U.S. 277 OVER DEEP RED CREEK OVERFLOW	COTTON COUNTY
DRAWN		BRIDGE "A"	
CHECKED		<b>DETAIL OF DRAINS AT END OF BRIDGE</b>	
APPROVED			
SQUAD	G/K ENGR.	JOB PIECE NO. 28036(04)	SHEET NO. 52

X:\guernsey\EC-1360\Struc\Bridge\_A\DRAINS.dgn

6/2/2016