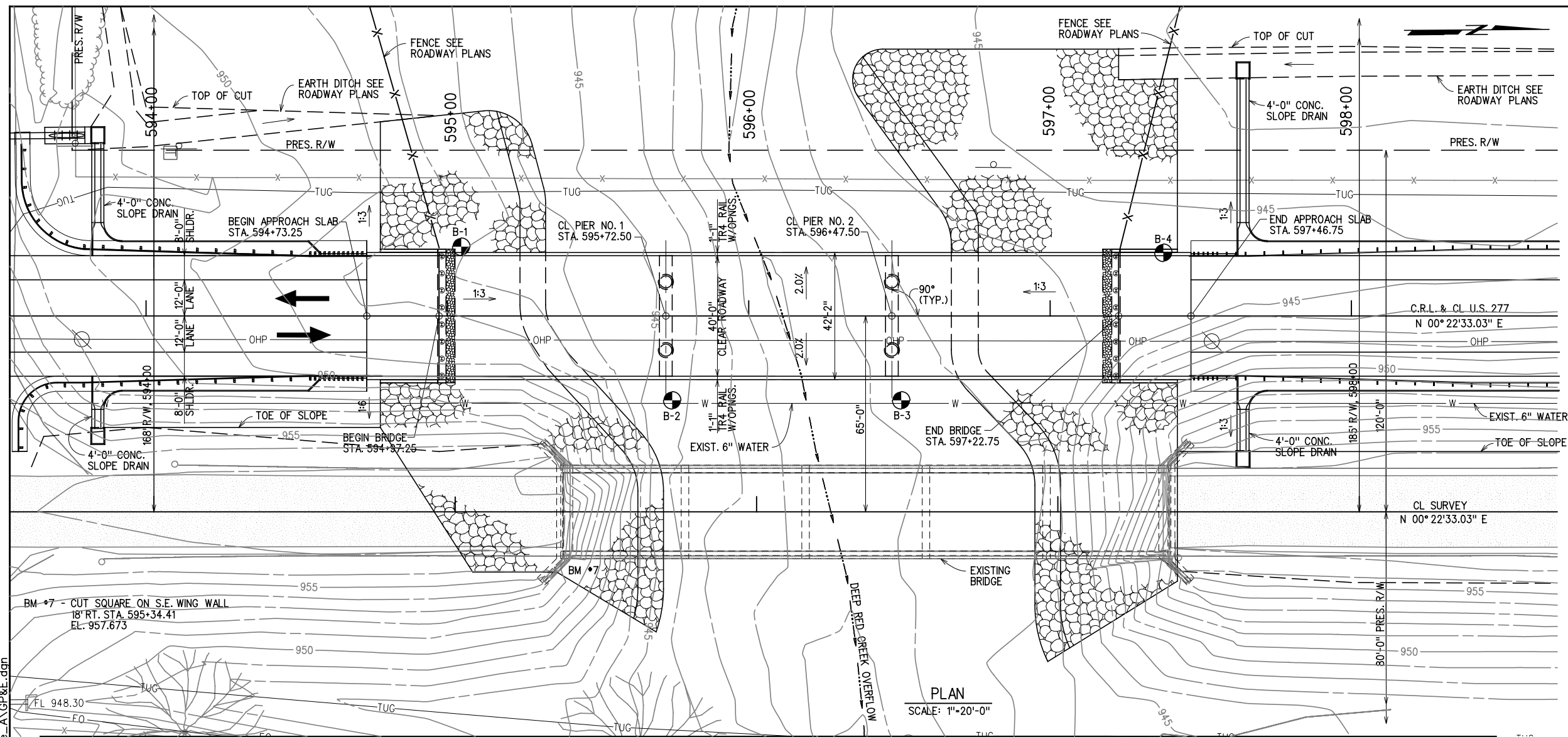


SHEET INDEX

SHEET NO.	TITLE
6	GENERAL NOTES (BRIDGE)
7	SUMMARY OF QUANTITIES (BRIDGE)
43	GENERAL PLAN & ELEVATION
44	DESIGN DATA & SUMMARY OF QUANTITIES
45	FOUNDATION REPORT (1 OF 2)
46	FOUNDATION REPORT (2 OF 2)
47	BRIDGE STAKING DIAGRAM
48	ABUTMENT DETAILS
49	PIER DETAILS (1 OF 2)
50	PIER DETAILS (2 OF 2)
51	GIRDER LAYOUT
52	DETAIL OF DRAINS AT END OF BRIDGE
53	RIPRAP DETAILS
54	BRIDGE REMOVAL-EXISTING BRIDGE OVER DEEP RED CREEK OVERFLOW



STANDARDS

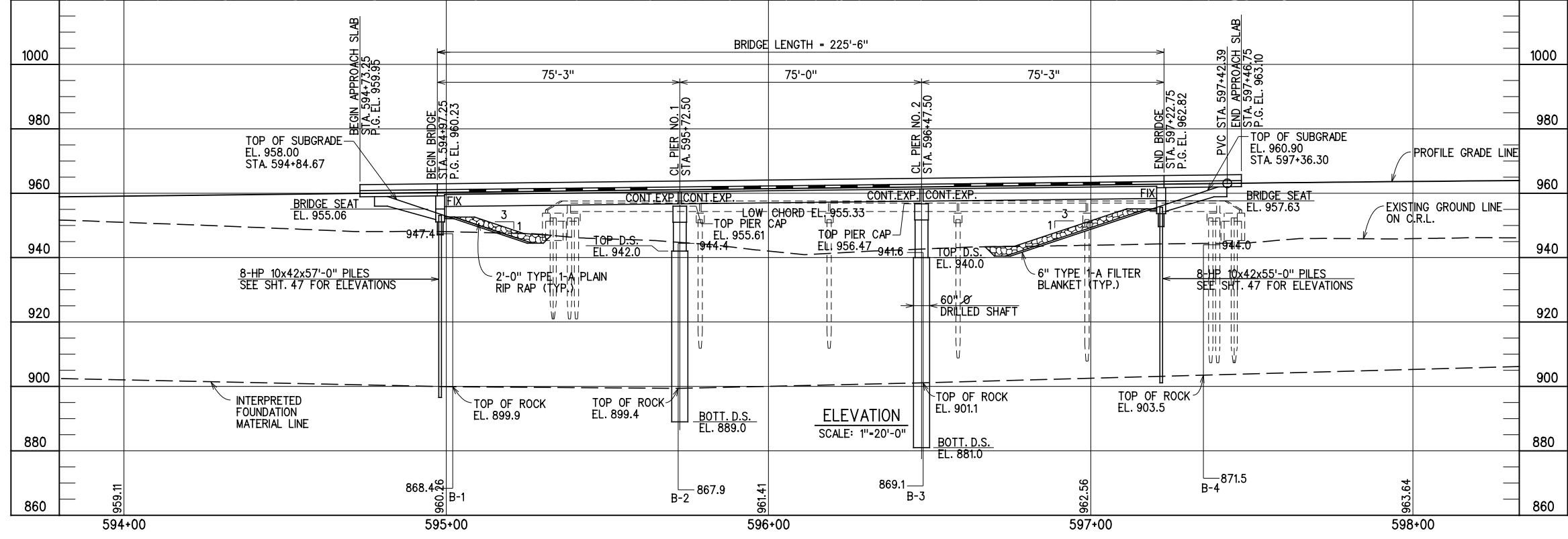
- DESIGN NO.
- TR4-2
 - HP1-2
 - B40-I-ABUT-PC3-1
 - B40-I-ABUT-PC3-2
 - B40-I-ABUT-MISC
 - B40-I-XSECT-PC234
 - B40-I-LSECT-PCB
 - B40-I-SPR-BLST-PCB
 - B40-I-PCB-III-75
 - B40-I-PCB-DTL
 - B40-I-ADIA-PC3-1
 - B40-I-ADIA-PC3-2
 - B40-I-DIA-PCB
 - B40-I-BRG-PC3
 - B40-I-SPR-QUAN-PCB-III
 - B40-I-AS
 - B40-I-TR4-0-PC23
 - LECS-4
 - PUD-3

NOTES:

- FOR FOUNDATION REPORT SEE SHTS. 45 & 46.
- FOR SUMMARY OF QUANTITIES SEE SHT. 44.
- FOR RIPRAP DETAILS SEE SHT. 53.
- FOR DETAIL OF DRAINS AT END OF BRIDGE, SEE SHT. 52.



GROSSMAN & KEITH
ENGINEERING COMPANY
10408 GREENBRIAR PL., OKLA. CITY, OK. 73159
PH. 691-3213 FAX 691-3214
CA. #74 EXPIRES 06/30/2016



DESIGN		U.S. 277 OVER DEEP RED CREEK OVERFLOW	COTTON COUNTY
DRAWN		BRIDGE "A"	
CHECKED		GENERAL PLAN & ELEVATION CONSTRUCT 3-75' TYPE III P.C. BEAM SPANS x 40' CLEAR ROADWAY WITH CONCRETE TRAFFIC RAIL (TR4) NO SKEW, CL STATION 596+10	
APPROVED			
SQUAD	G/K ENGR.	JOB PIECE NO. 28036(04)	SHEET NO. 43

X:\quernsey\EC-1360\Struc\Bridge_A\GP&E.dgn 6/2/2016