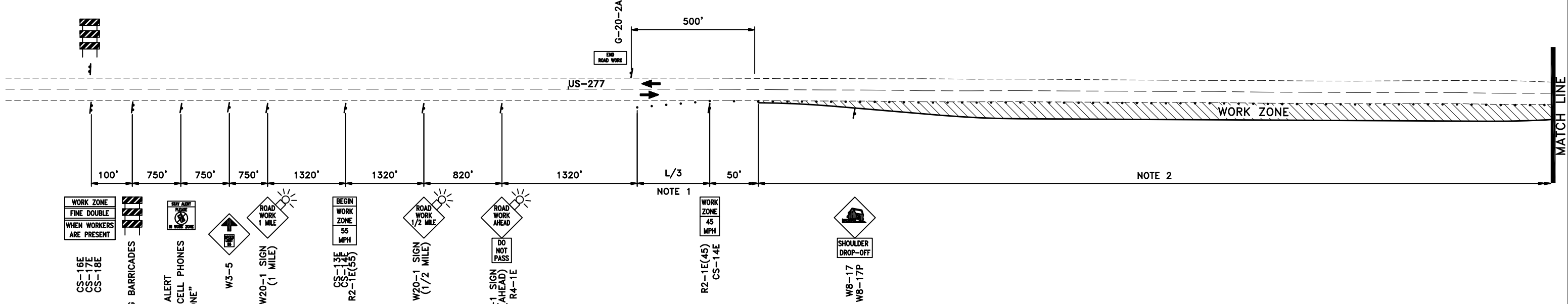


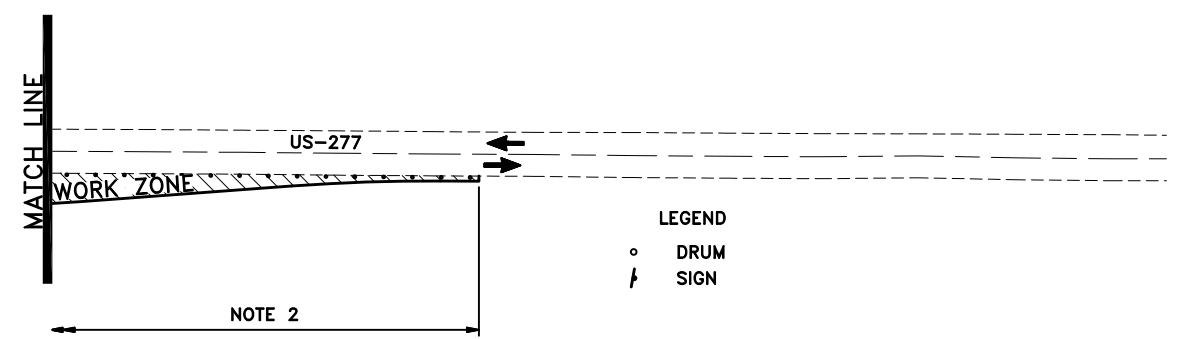
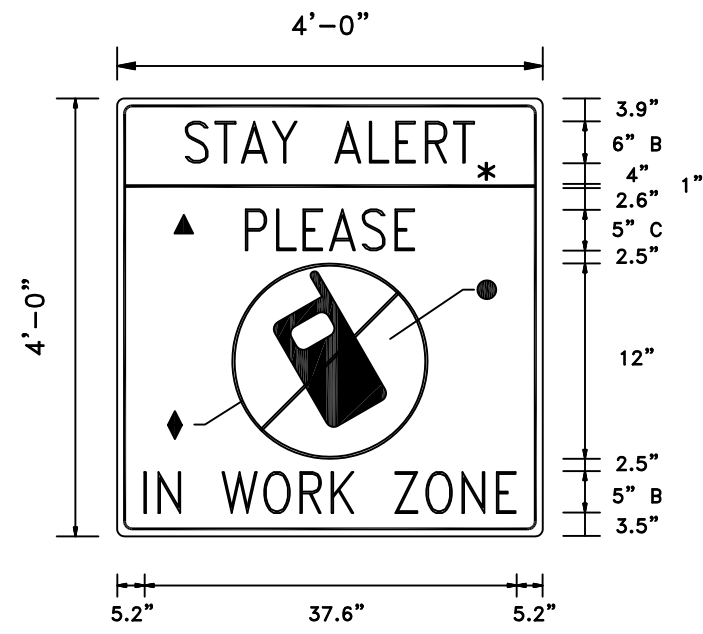


THIS PROJECT SHALL BE CONSTRUCTED WITHOUT CLOSING THE EXISTING SECTION LINE ROADS TO LOCAL AND THROUGH TRAFFIC. SEE STANDARD SPECIFICATIONS FOR MAINTENANCE OF LOCAL AND THROUGH TRAFFIC. (SEE STANDARDS TCS7-1- AND TCS22-1-)

OPEN TRENCH SHALL BE LIMITED TO (1) SIDE AT A TIME. SEE STD. PDT-1- PAVEMENT DROP-OFF TREATMENTS



SIGNING LAYOUT FOR EACH DIRECTION OF TRAFFIC



NOTE 1
A MINIMUM OF FIVE (5) CHANNELIZING DEVICES SHALL BE PLACED THROUGH THIS TAPER.

NOTE 2
MAXIMUM SPACING BETWEEN CHANNELIZING DEVICES (FEET) SHALL BE EQUAL TO THE POSTED SPEED LIMIT (MPH), WITH THE FOLLOWING EXCEPTIONS, SPACING SHALL NOT EXCEED 25 FEET FOR CONES OR TUBE CHANNELIZERS, SPACING SHALL NOT EXCEED 50 FEET FOR TYPE II BARRICADES, VERTICAL PANELS OR DRUMS.

BORDER
R=1.5"
TH=0.75"
IN=0.75"

- COLOR:**
LEGEND, SYMBOL AND BORDER:
BLACK (NON-REFLECTORIZED)
BACKGROUND:
▲ FLUORESCENT ORANGE (REFLECTORIZED)
* FLUORESCENT YELLOW (REFLECTORIZED)
● WHITE (REFLECTORIZED)
◊ CIRCLE AND DIAGONAL:
RED (TRANSPARENT)

LEGEND
○ DRUM
| SIGN

DETOUR CONSTRUCTION PHASE	
Design	
Drawn	
Checked	
Approved	
Squad	GUERNSEY

CONSTRUCTION SIGNING	
STATE JOB No. 28036(04)	Sheet No. 30