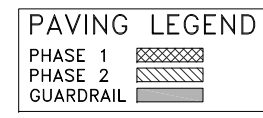
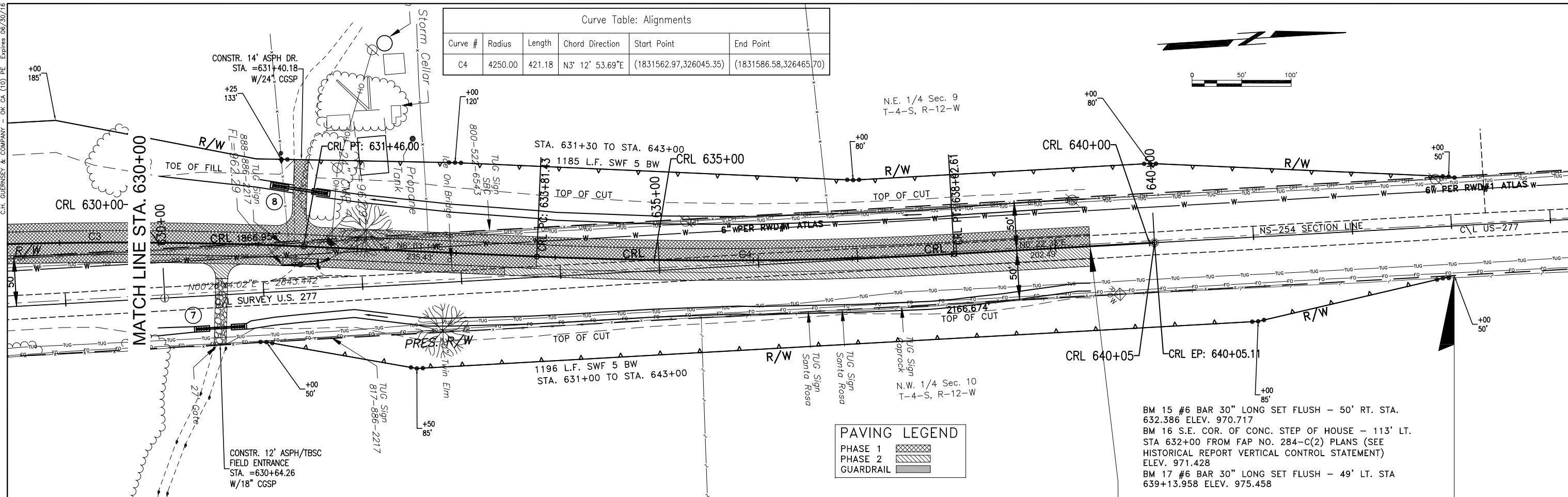
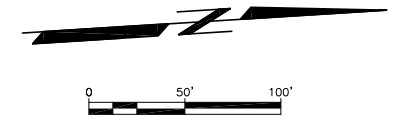


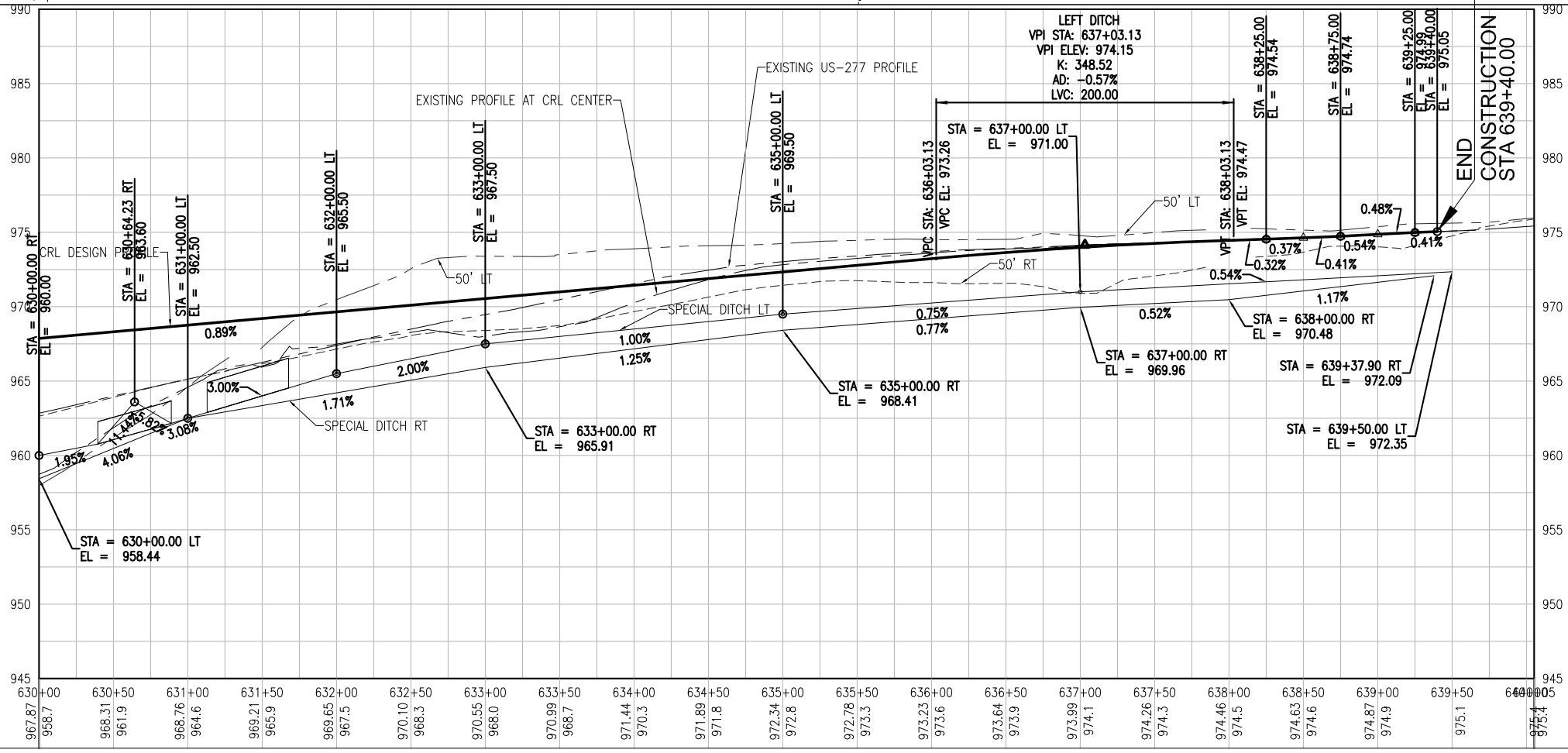
C.H. GUERNEY & COMPANY - OK, CA (10) PE, Expires 06/30/16

1/29/2016 M:\7697\010\US-277 Deep Red Creek Plans\DEEP RED CREEK CSI.dwg

Curve Table: Alignments					
Curve #	Radius	Length	Chord Direction	Start Point	End Point
C4	4250.00	421.18	N3° 12' 53.69"E	(1831562.97,326045.35)	(1831586.58,326465.70)



BM 15 #6 BAR 30" LONG SET FLUSH - 50' RT. STA. 632.386 ELEV. 970.717
 BM 16 S.E. COR. OF CONC. STEP OF HOUSE - 113' LT. STA 632+00 FROM FAP NO. 284-C(2) PLANS (SEE HISTORICAL REPORT VERTICAL CONTROL STATEMENT) ELEV. 971.428
 BM 17 #6 BAR 30" LONG SET FLUSH - 49' LT. STA 639+13.958 ELEV. 975.458



END INCIDENTAL CONSTRUCTION
 STA. 643+00