

SURVEY CONTROL DATA
SEE SURVEY DATA SHEETS

STATE OF OKLAHOMA
DEPARTMENT OF TRANSPORTATION

PLAN OF PROPOSED
STATE HIGHWAY
PROJECT NO. ACSTP-217C(029)SS
BRIDGE & APPROACHES
US HIGHWAY NO. 277

COTTON COUNTY

CONTROL SECTION NO. 277-17-08

STATE JOB No. J/P 28036(04)

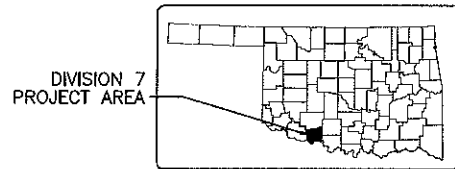
BRIDGE "A": LOCATION No. 1708 0303X NEW NBI No.30539

BRIDGE "B": LOCATION No. 1708 0319X NEW NBI No.30540

BRIDGE "C": LOCATION No. 1708 0353X NEW NBI No.30541

INDEX OF SHEETS

SHT. No.	DESCRIPTION	SHT. No.	DESCRIPTION
1	TITLE	43	GENERAL PLAN AND ELEVATION
2-3	TYPICAL SECTIONS	44	DESIGN DATA AND SUMMARY OF QUANTITIES
4	SUMMARY OF PAY QUANTITIES & NOTES(ROADWAY)	45-46	FOUNDATION REPORT (2 SHEETS)
5	SUMMARY OF PAY QUANTITIES & NOTES(TRAFFIC)	47	BRIDGE STAKING DIAGRAM
6	GENERAL NOTES (BRIDGE)	48	ABUTMENT DETAILS
7	SUMMARY OF QUANTITIES (BRIDGE)	49-50	PIER DETAILS (2 SHEETS)
8	SUMMARY SHEET	51	GIRDER LAYOUT
9	DRAINAGE DESIGN RECORD	52	DETAILS OF DRAINS AT ENDS OF BRIDGE
10	SUMMARY OF DRAINAGE STRUCTURES	53	RIPRAP DETAILS
11-22	ROADWAY - PLAN & PROFILE	54	BRIDGE REMOVAL-EXISTING BRIDGE OVER DEEP RED CREEK OVERFLOW
23-28	GEOMETRIC LAYOUT		
29	ENVIRONMENTAL MITIGATION NOTES		
30-31	CONSTRUCTION SIGNING		
32-34	SIGNING AND STRIPING PLAN		
35	SIGN SUMMARY		
36-38	SEDIMENT CONTROL		
39	STORM WATER MANAGEMENT PLAN		
40-42	DEMOLITION PLAN		
			BRIDGE "A"
			GENERAL PLAN AND ELEVATION
			DESIGN DATA AND SUMMARY OF QUANTITIES
			FOUNDATION REPORT (2 SHEETS)
			BRIDGE STAKING DIAGRAM
			ABUTMENT DETAILS
			PIER DETAILS (2 SHEETS)
			GIRDER LAYOUT
			DETAILS OF DRAINS AT ENDS OF BRIDGE
			RIPRAP DETAILS
			BRIDGE REMOVAL-EXISTING BRIDGE OVER DEEP RED CREEK
			BRIDGE "B"
			GENERAL PLAN AND ELEVATION
			DESIGN DATA AND SUMMARY OF QUANTITIES
			FOUNDATION REPORT (2 SHEETS)
			BRIDGE STAKING DIAGRAM
			ABUTMENT DETAILS (8 SHEETS)
			SUBSTRUCTURE EXCAVATION AND PIPE UNDERDRAIN DETAILS
			PIER DETAILS (2 SHEETS)
			TYPICAL SECTION
			LONGITUDINAL SECTION
			GIRDER LAYOUT
			EXPANSION JOINT DETAILS
			CONCRETE DECK DETAILS (3 SHEETS)
			TYPE III P.C. BEAM DETAILS (2 SHEETS)
			DIAPHRAGM DETAILS
			BEARING ASSEMBLY DETAILS
			APPROACH SLAB DETAILS
			DETAILS OF DRAINS AT ENDS OF BRIDGE
			RIPRAP DETAILS
			BRIDGE REMOVAL-EXISTING BRIDGE OVER DEEP RED CREEK OVERFLOW
			BRIDGE "C"
			GENERAL PLAN AND ELEVATION
			DESIGN DATA AND SUMMARY OF QUANTITIES
			FOUNDATION REPORT (2 SHEETS)
			BRIDGE STAKING DIAGRAM
			ABUTMENT DETAILS (8 SHEETS)
			SUBSTRUCTURE EXCAVATION AND PIPE UNDERDRAIN DETAILS
			PIER DETAILS (2 SHEETS)
			TYPICAL SECTION
			LONGITUDINAL SECTION
			GIRDER LAYOUT
			EXPANSION JOINT DETAILS
			CONCRETE DECK DETAILS (3 SHEETS)
			TYPE III P.C. BEAM DETAILS (2 SHEETS)
			DIAPHRAGM DETAILS
			BEARING ASSEMBLY DETAILS
			APPROACH SLAB DETAILS
			DETAILS OF DRAINS AT ENDS OF BRIDGE
			RIPRAP DETAILS
			BRIDGE REMOVAL-EXISTING BRIDGE OVER DEEP RED CREEK OVERFLOW
			SURVEY DATA SHEETS
			CROSS SECTIONS



DESIGN DATA

ADT (2016)	= 800
ADT (2036)	= 1275
K	= 11%
D	= 56%
T ₃ (% of ADT)	= 13%
DESIGN SPEED	= 65 MPH
Flex. ESAL'S	= 1.2 M

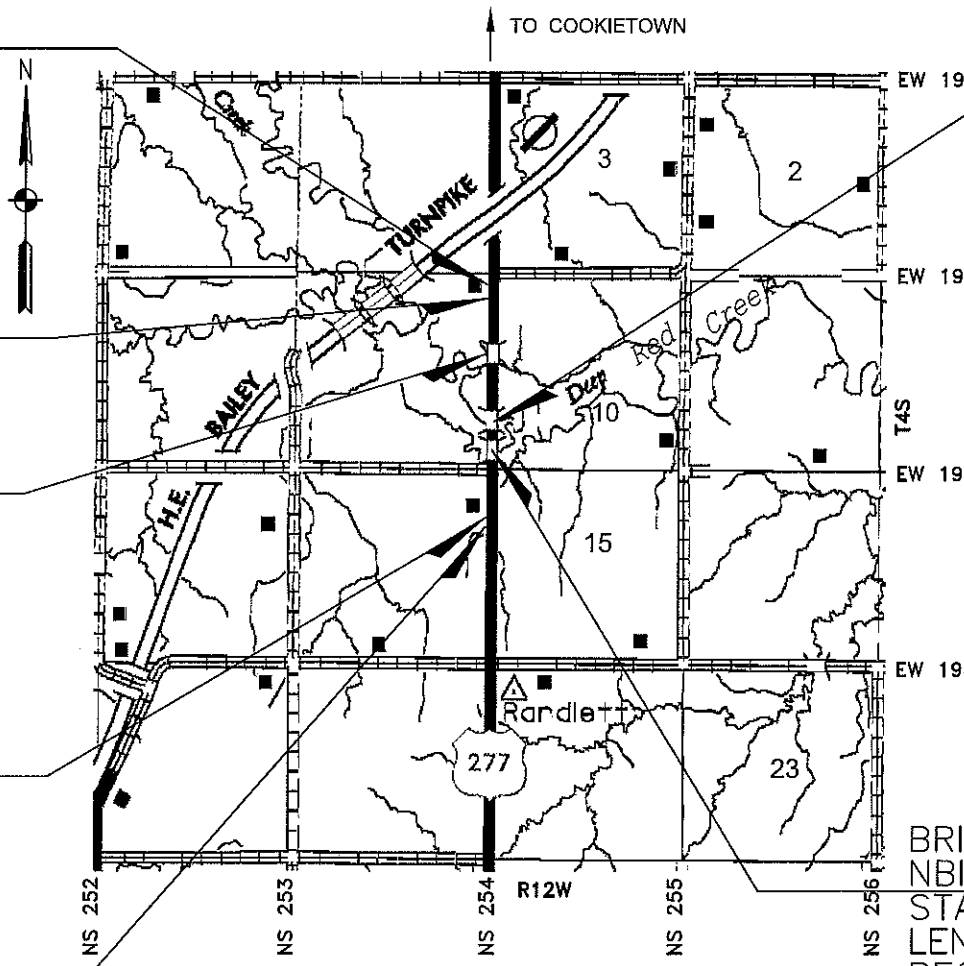
J/P 28036(04)
STA. 643+00 END
INCIDENTAL CONSTRUCTION

J/P 28036(04)
STA. 639+40 END CONST.
CONTROL SUBSECTION NO. 25.93

BRIDGE "C"
NBI # 09510
STA. 623+50
LENGTH = 213.70'
BEGIN STA. 622+43.15
END STA. 624+56.85

J/P 28036(04)
STA. 580+00 BEGIN CONST.
CONTROL SUBSECTION NO. 24.81

J/P 28036(04)
STA. 574+93 BEGIN
INCIDENTAL CONSTRUCTION



BRIDGE "B"
NBI # 06583
STA. 605+93
LENGTH = 401.67'
BEGIN STA. 603+92.17
END STA. 607+93.83

THE FOLLOWING O.D.O.T. STANDARD DRAWINGS WILL BE REQUIRED FOR THIS PROJECT.

ROADWAY	BRIDGE	BRIDGE	TRAFFIC	TRAFFIC
SSS-1-1	TR4-2-00E	B40-C-ABUT-PC4-1-02E	PM3-1-02	TCS1-1-01 TCS19-1-01
TSC1-3-2	HP1-2-00E	B40-C-ABUT-PC4-2-02E	DU1-1-00	TCS2-1-00 TCS20-1-00
TSC2-3-2	EJ-SK-03E	B40-C-ABUT-MISC-01E	DU2-1-00	TCS3-1-01 TCS21-1-02
TSD-2-0	EJ-SQ-03E	B40-C-XSECT-PC234-01E	RSD1-1-00	TCS4-1-01 TCS22-1-00
TRFD-1-2	EJ-DTL-01E	B40-C-LSECT-PCB-04E	WSD1-1-00	TCS5-1-00 TCS23-1-00
CET4S-3-2	B40-I-ABUT-PC3-1-01E	B40-C-SPR-BLIST-PCB-01E	WSD2-1-00	TCS6-1-02 TCS24-1-02
LECS-4-1	B40-I-ABUT-PC3-2-01E	B40-C-PCB-IV-80-01E	WSD3-1-00	TCS7-1-02 THRI-1-02
PUD-3-2	B40-I-ABUT-MISC-01E	B40-C-PCB-DTL-01E	SBS1-1-00	TCS8-1-00 SKT-1-00
CET4D-3-2	B40-I-XSECT-PC234-03E	B40-C-DIA-END-PC234-1-02E	SBS2-1-00	TCS9-1-01 GA31-1-00
SBI-4-2	B40-I-LSECT-PCB-03E	B40-C-DIA-END-PC234-2-03E	GMS1-1-00	TCS10-1-00 GHW1-1-00
MI-3-0	B40-I-SPR-BLIST-PCB-03E	B40-C-DIA-INT-PCB-01E	SSP1-1-02	TCS11-1-01 GHW2-1-00
RDI-3-1	B40-I-PCB-III-75-00E	B40-C-BRG-PC4BT-01E	SSA1-1-00	TCS12-1-00
DC-3-2	B40-I-ADIA-PC3-1-01E	B40-C-SPR-QUAN-PCB-IV-03E		TCS13-1-00
PDT-1-3	B40-I-ADIA-PC3-2-02E	B40-C-AS-03E		TCS14-1-00
RWF1-2-2	B40-I-DIA-PCB-01E	B40-C-TR4-0-1-01E		TCS15-1-00
RWF2-2-1	B40-I-BRG-PC3-02E	B40-C-TR4-0-2-01E		TCS16-1-00
	B40-I-SPR-QUAN-PCB-III-03E			TCS18-1-01
	B40-I-AS-03E			
	B40-I-TR4-0-PC23-02E			

BRIDGE "A"
NBI # 09516
STA. 596+10
LENGTH = 225.50'
BEGIN STA. 594+97.25
END STA. 597+22.75

ROADWAY LENGTH 5099.13 FT. = 0.965 MI.
BRIDGE LENGTH 840.87 FT. = 0.159 MI.
PROJECT LENGTH 1.124 MI.
EXCEPTIONS NONE
EQUATIONS NONE

SCALES
PLAN 1" = 50'
PROFILE 1" = 50' HORIZONTAL
1" = 5' VERTICAL
CROSS SECTIONS 1" = 10'

CONVENTIONAL SYMBOLS

	PROPOSED ROAD
	RAILROADS
	CORPORATE BOUNDARY
	RANGE & TOWNSHIP
	SECTION LINES
	QUARTER SECTION LINES
	FENCES
	GROUND LINE
	EXISTING ROADS
	BASE LINE
	GRADE LINES
	TELEPHONE & TELEGRAPH
	POWER LINES
	OIL WELLS
	BUILDINGS
	DRAINAGE STRUCTURES-IN PLACE
	DRAINAGE STRUCTURES-NEW
	RIGHT-OF-WAY LINES-EXISTING
	RIGHT-OF-WAY LINES-NEW
	RIGHT-OF-WAY MARKERS-IN PLACE
	RIGHT-OF-WAY MARKERS-REMOVE & RESET
	RIGHT-OF-WAY MARKERS-NEW
	CONTROLLED ACCESS
	RIGHT-OF-WAY FENCE

2009 OKLAHOMA STANDARD SPECIFICATIONS FOR HIGHWAY CONSTRUCTION-ENGLISH GOVERN,
APPROVED BY THE U.S. DEPARTMENT OF TRANSPORTATION, FEDERAL HIGHWAY
ADMINISTRATION, EFFECTIVE JAN. 04, 2010.

 ENGINEERS ARCHITECTS CONSULTANTS	 By: <i>Edward M. Donwerth</i> EDWARD M. DONWERTH, P.E. Oklahoma Reg. No. 25166
OKLAHOMA DEPARTMENT OF TRANSPORTATION SWO. 4664(1) Project No. ACSTP-217C(029)SS Sheet No. 1	