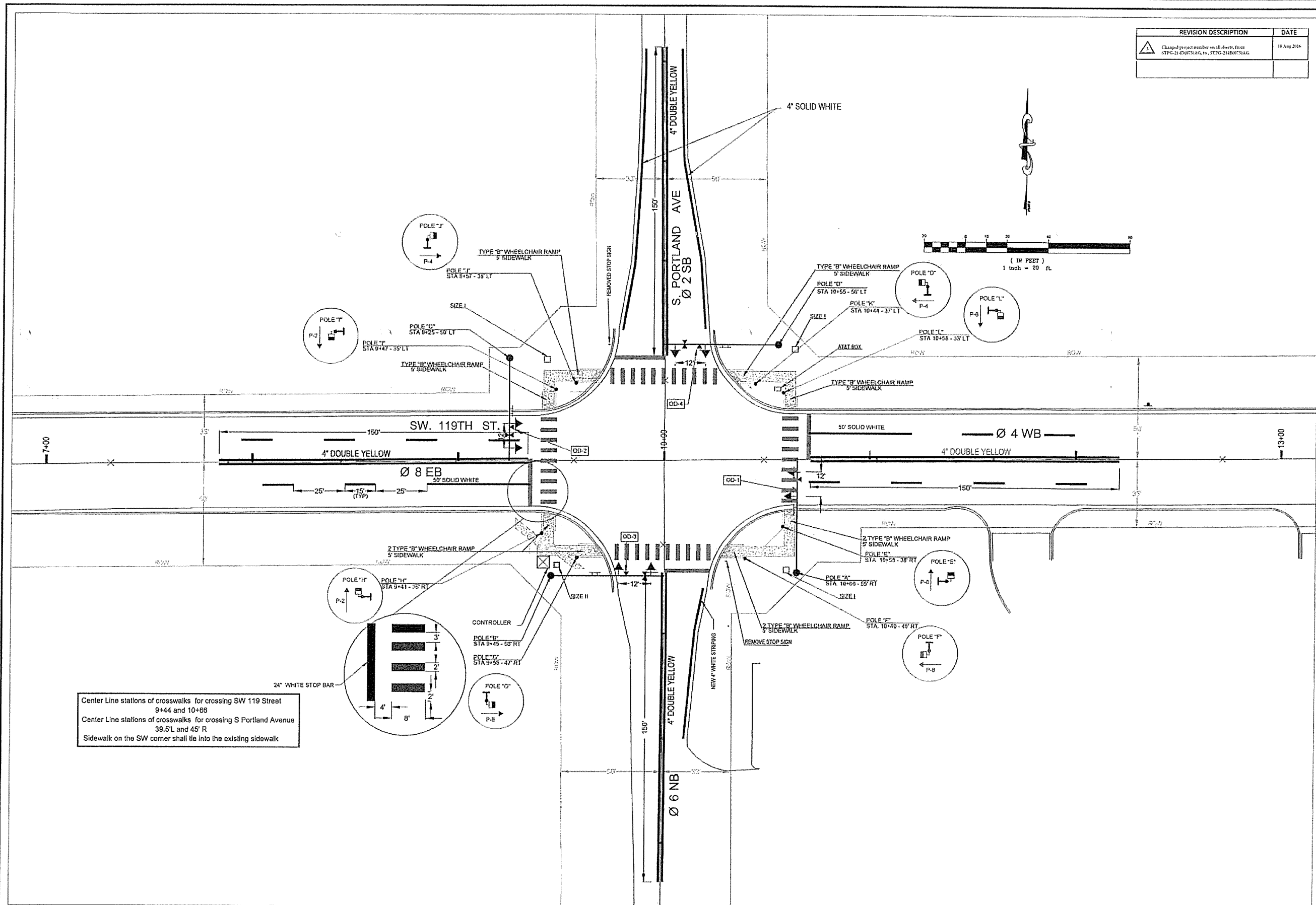


REVISION DESCRIPTION	DATE
△ Changed project number on all sheets, from STPG-214B(075)AG to STPG-214B(075)AG	18 Aug 2014



Center Line stations of crosswalks for crossing SW 119 Street
 9+44 and 10+66
 Center Line stations of crosswalks for crossing S Portland Avenue
 39.5' L and 45' R
 Sidewalk on the SW corner shall tie into the existing sidewalk

The City of
Oklahoma City
 Public Works Department
 Traffic Management Division

PROJECT NO.
 STPG-214B (075)AG
 JOB PIECE NO.
 31566(04)

DESIGNED BY: JAMES R. WELCH
 DRAWN BY: TVN
 APPROVED BY: 07/15/2015
 DATE: 07/16/2015

S. PORTLAND AVE & SW 119th ST
 PAVEMENT MARKINGS