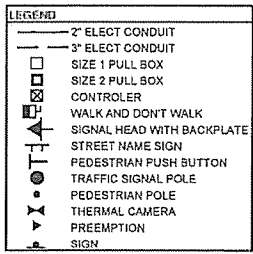


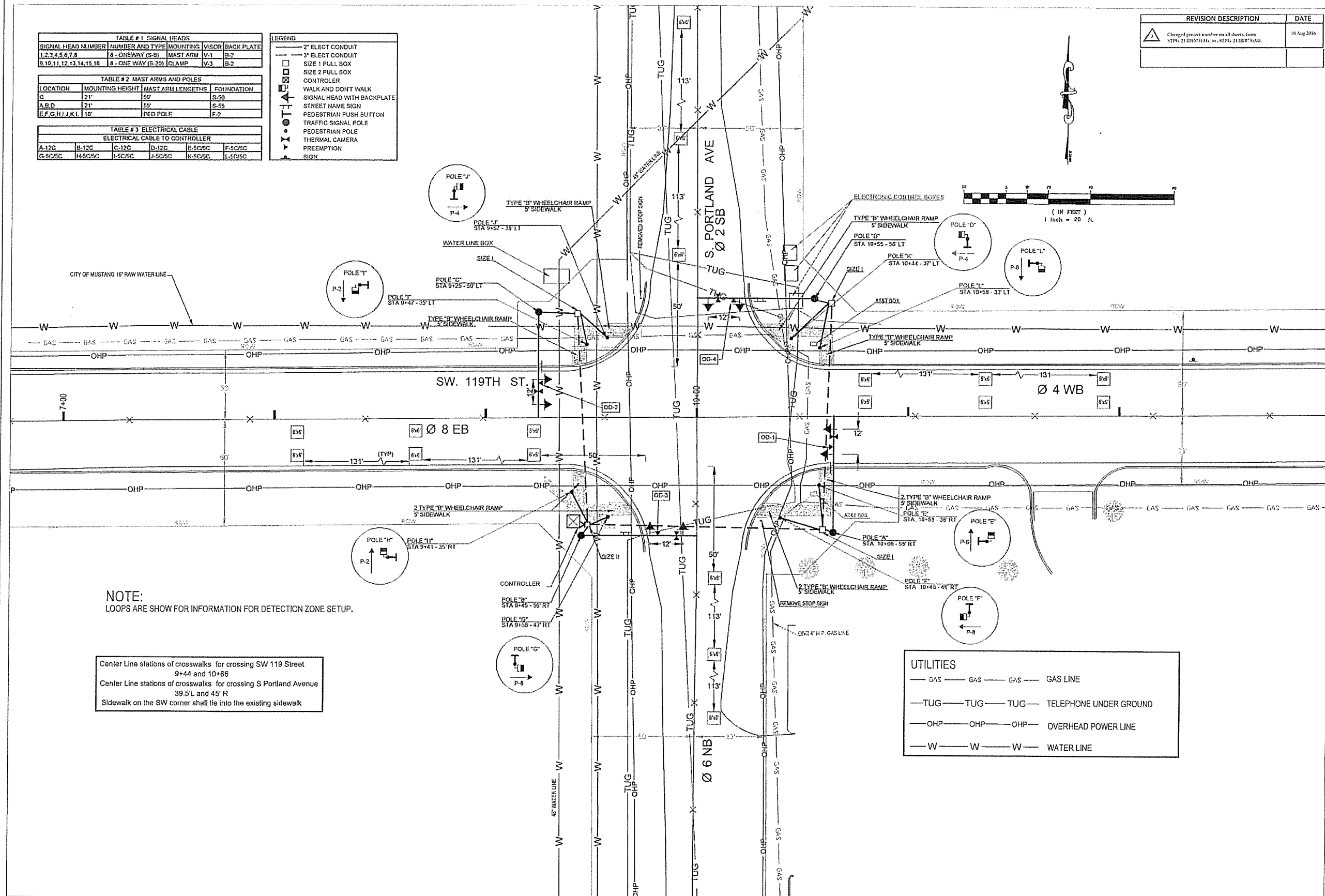
TABLE # 1 SIGNAL HEADS				
SIGNAL HEAD NUMBER	NUMBER AND TYPE	MOUNTING	VISOR	BACK PLATE
1,2,3,4,5,6,7,8	8 - ONEWAY (S-B)	MAST ARM	V-1	B-2
9,10,11,12,13,14,15,16	8 - ONEWAY (S-20)	CLAMP	V-3	B-2

TABLE # 2 MAST ARMS AND POLES			
LOCATION	MOUNTING HEIGHT	MAST ARM LENGTHS	FOUNDATION
C	21'	55'	S-50
A,B,D	21'	55'	S-55
E,F,G,H,J,K,L	110'	PEO-POLE	F-2

TABLE # 3 ELECTRICAL CABLE					
ELECTRICAL CABLE TO CONTROLLER					
A-12C	B-12C	C-12C	D-12C	E-505C	F-505C
G-505C	H-505C	I-505C	J-505C	K-505C	L-505C

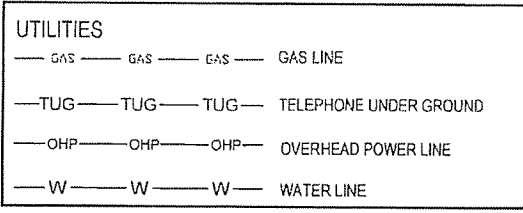


REVISION DESCRIPTION	DATE
Change project number on all sheets from STPG-214B(075)AG to STPG-214B(075)AG.	18 Aug 2016



NOTE:
LOOPS ARE SHOW FOR INFORMATION FOR DETECTION ZONE SETUP.

Center Line stations of crosswalks for crossing SW 119 Street
9+44 and 10+66
Center Line stations of crosswalks for crossing S Portland Avenue
39.5'L and 45' R
Sidewalk on the SW corner shall tie into the existing sidewalk



The City of
Oklahoma City
Public Works Department
Traffic Management Division



PROJECT NO.
STPG-214 B (075) AG

JOB PIECE NO.
31566 (04)

DESIGNED BY: JAMES R. WELCH
DRAWN BY: TYN
APPROVED BY: 07/16/2015
DATE: 07/16/2015

**S. PORTLAND AVE & SW 119th ST
SIGNAL PLAN**