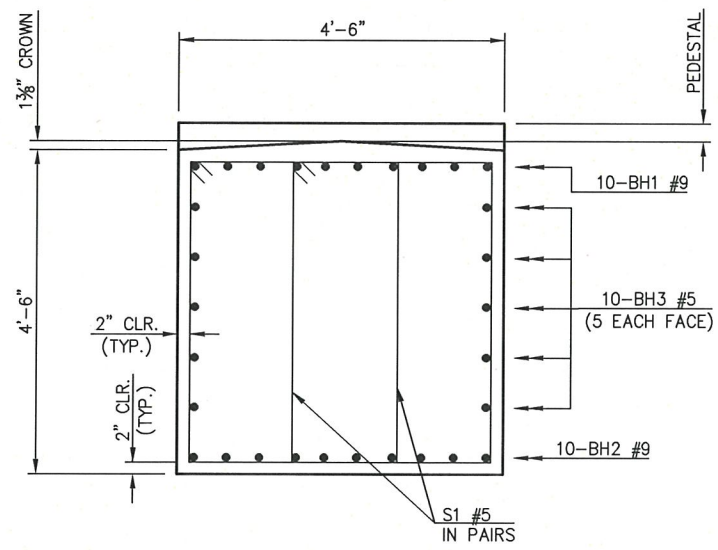
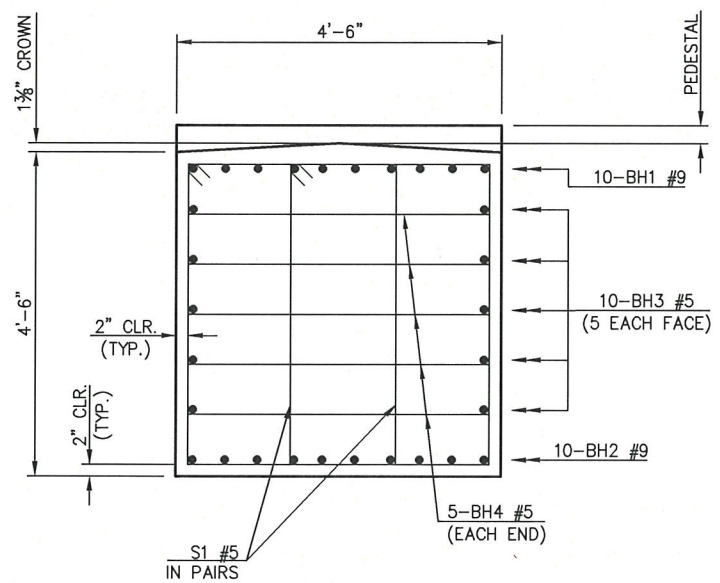


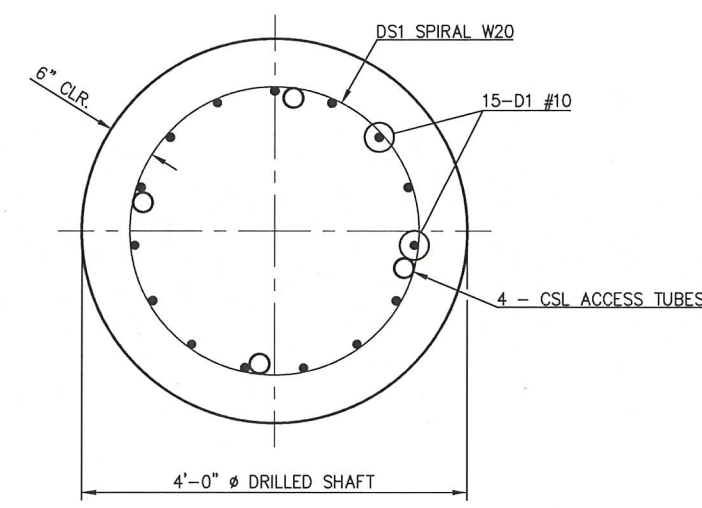
REVISIONS		
REV. NO.	DESCRIPTION	DATE



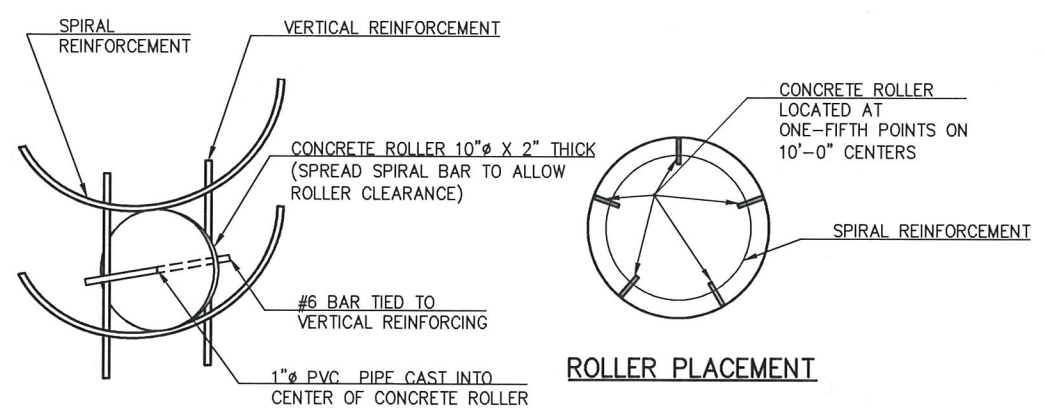
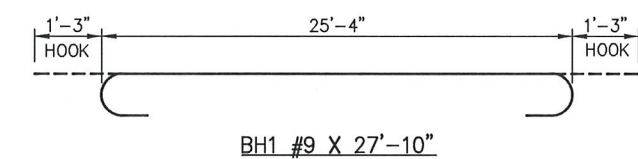
SECTION A-A



END SECTION

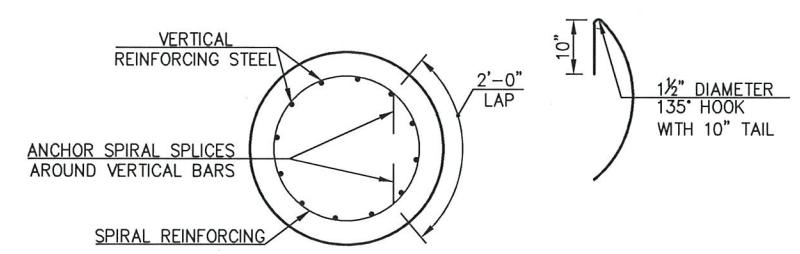


SECTION B-B



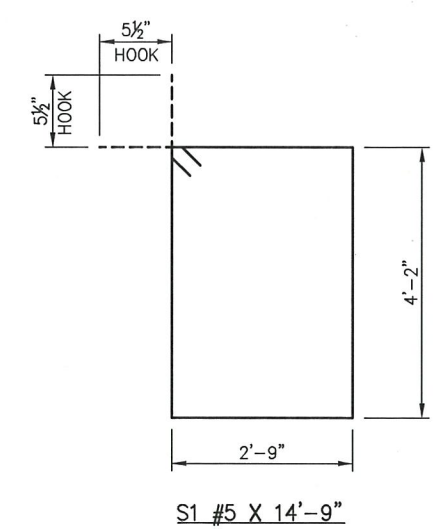
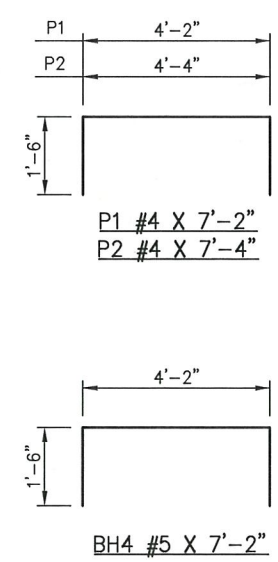
ROLLER INSTALLATION

ROLLER PLACEMENT



DETAIL OF SPIRAL REINFORCING SPLICE

NOTE: SPIRAL BARS SHALL CONFORM TO AASHTO M-32. SPIRAL BAR LENGTH DOES NOT INCLUDE LAP. IF LAP IS REQUIRED, THE LENGTH OF THE LAP SHALL BE AS SHOWN.



DETAIL OF CONCRETE ROLLER
 NOTE: CONCRETE USED IN THE CONCRETE ROLLERS SHALL HAVE A MINIMUM 28 DAY COMPRESSIVE STRENGTH OF 4,000 P.S.I. SLAB BOLSTERS, HIGH CHAIRS AND PLASTIC ROLLERS SHALL NOT BE SUBSTITUTED FOR THE CONCRETE ROLLERS.

DESIGN	GMN	8/15	BARRINGTON HOLLOW BR. 22 & LWC	CHEROKEE COUNTY
DETAIL	GMN	8/15	BRIDGE "B"	
CHECK	MBS	12/15	DETAILS OF PIERS (SHEET NO. 2 OF 2)	
GUY ENGINEERING SERVICES, INC.				
STATE JOB PIECE NO. 29394(04)			SHEET NO. 33	

Wednesday, December 02, 2015 9:36:19 AM V:\13-828E Barrington Hollow Br 22 & LWC-Cherokee 2-CED2\STRUCTURAL\DWG\Barrington Hollow & LWC - Piers.dwg