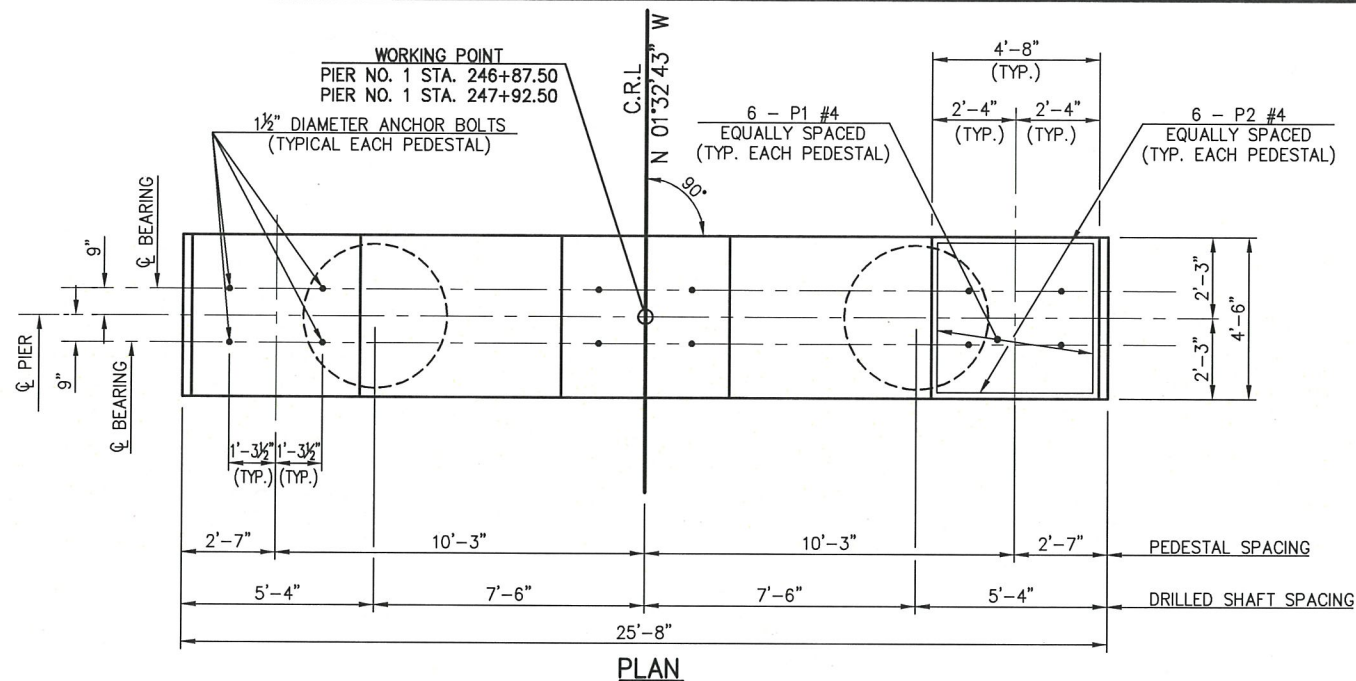


REVISIONS		
REV. NO.	DESCRIPTION	DATE

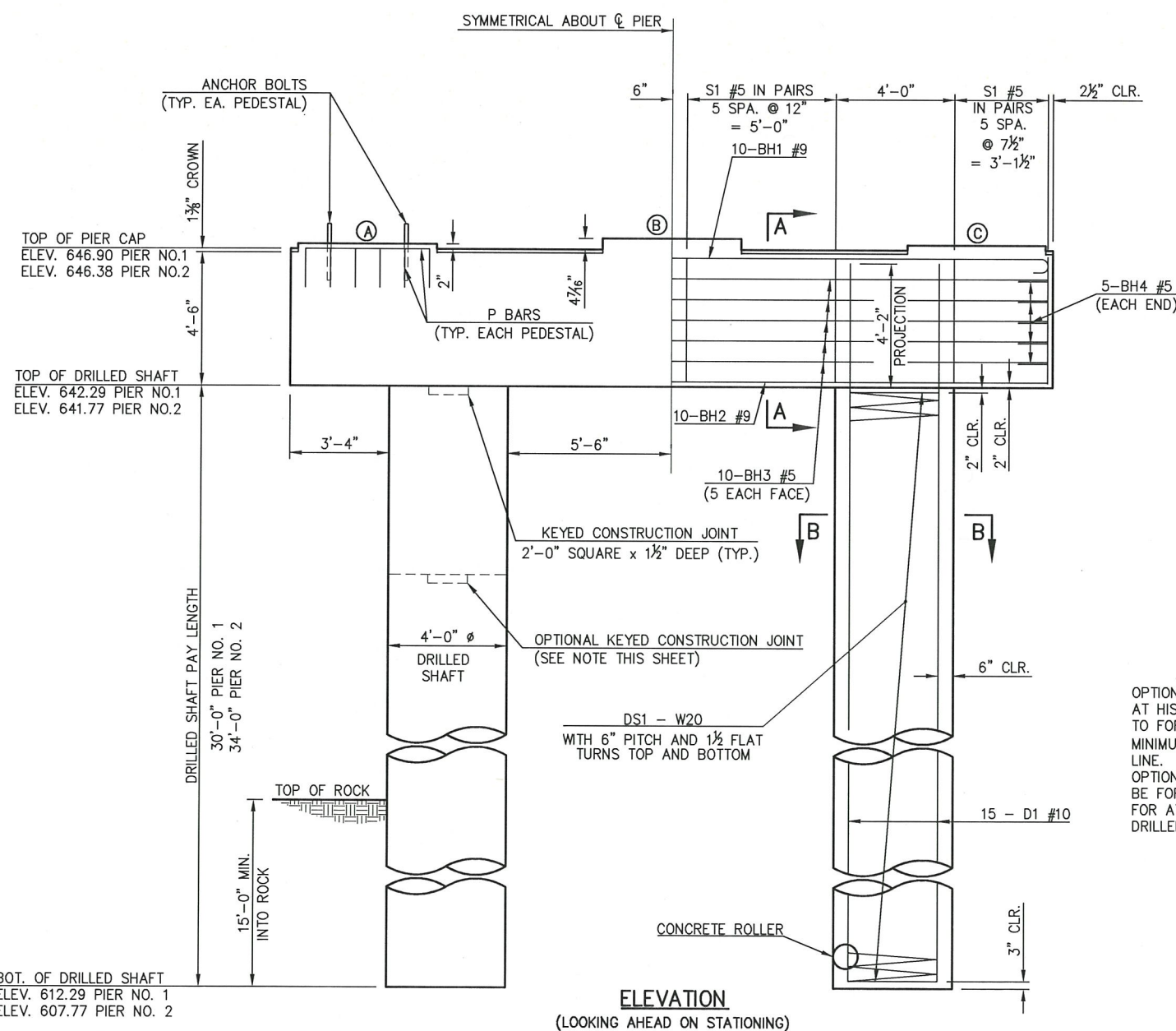


PIER NO.	A	B	C
1	647.07	647.27	647.07
2	646.55	646.75	646.55

MARK	SIZE	NO.	FORM	LENGTH
BH1	#9	10	BNT.	27'-10"
BH2	#9	10	STR.	25'-4"
BH3	#5	10	STR.	25'-4"
BH4	#5	10	BNT.	7'-2"
P1	#4	18	BNT.	7'-2"
P2	#4	18	BNT.	7'-4"
S1	#5	48	BNT.	14'-9"

MARK	SIZE	NO.	FORM	LENGTH
D1	#10	30	STR.	33'±1"
DS1	W20	2	SPIRAL	586'-8"

① INCLUDED IN PRICE BID PER LINEAR FOOT OF DRILLED SHAFT



NOTE:  
INSTALL DRILLED SHAFTS AT LEAST THE SPECIFIED MINIMUM DISTANCE INTO ROCK. IN NO CASE SHALL THE BOTTOM OF THE DRILLED SHAFT BE HIGHER THAN THE BOTTOM OF DRILLED SHAFT ELEVATION SHOWN IN THE PLANS.

MARK	SIZE	NO.	FORM	LENGTH
BH1	#9	10	BNT.	27'-10"
BH2	#9	10	STR.	25'-4"
BH3	#5	10	STR.	25'-4"
BH4	#5	10	BNT.	7'-2"
P1	#4	18	BNT.	7'-2"
P2	#4	18	BNT.	7'-4"
S1	#5	48	BNT.	14'-9"

MARK	SIZE	NO.	FORM	LENGTH
D1	#10	30	STR.	37'±1"
DS1	W20	2	SPIRAL	662'-2"

① INCLUDED IN PRICE BID PER LINEAR FOOT OF DRILLED SHAFT

ITEM	UNIT	PIER NO. 1	PIER NO. 2	TOTAL
CLASS A CONCRETE	C.Y.	20.20	20.20	40.40
REINFORCING STEEL	LB.	3060.00	3060.00	6,120.00
DRILLED SHAFTS 48" DIAMETER	L.F.	60.00	68.00	128.00
CROSSHOLE SONIC LOGGING	EA	-	-	1.00

OPTIONAL KEYED CONSTRUCTION JOINT:  
AT HIS OPTION, THE CONTRACTOR MAY ELECT TO FORM A KEYED CONSTRUCTION JOINT A MINIMUM OF 1' ABOVE THE NATURAL GROUND LINE. THE PORTION OF SHAFT ABOVE THE OPTIONAL KEYED CONSTRUCTION JOINT SHALL BE FORMED AND POURED, AND SHALL BE PAID FOR AT THE UNIT PRICE PER LINEAR FOOT OF DRILLED SHAFT.

DESIGN	GMN	8/15	BARRINGTON HOLLOW BR. 22 & LWC	CHEROKEE COUNTY
DETAIL	GMN	8/15	BRIDGE "B"	
CHECK	MBS	12/15	<b>DETAILS OF PIERS</b> <b>(SHEET NO. 1 OF 2)</b>	
GUY ENGINEERING SERVICES, INC.				
STATE JOB PIECE NO. 29394(04)			SHEET NO. 32	

Wednesday, December 02, 2015 9:35:56 AM  
 V:\13-828E\_Barrington Hollow Br. 22 & LWC-Cherokee 2-CED2\STRUCTURAL\DWG\Barrington Hollow & LWC - Piers.dwg