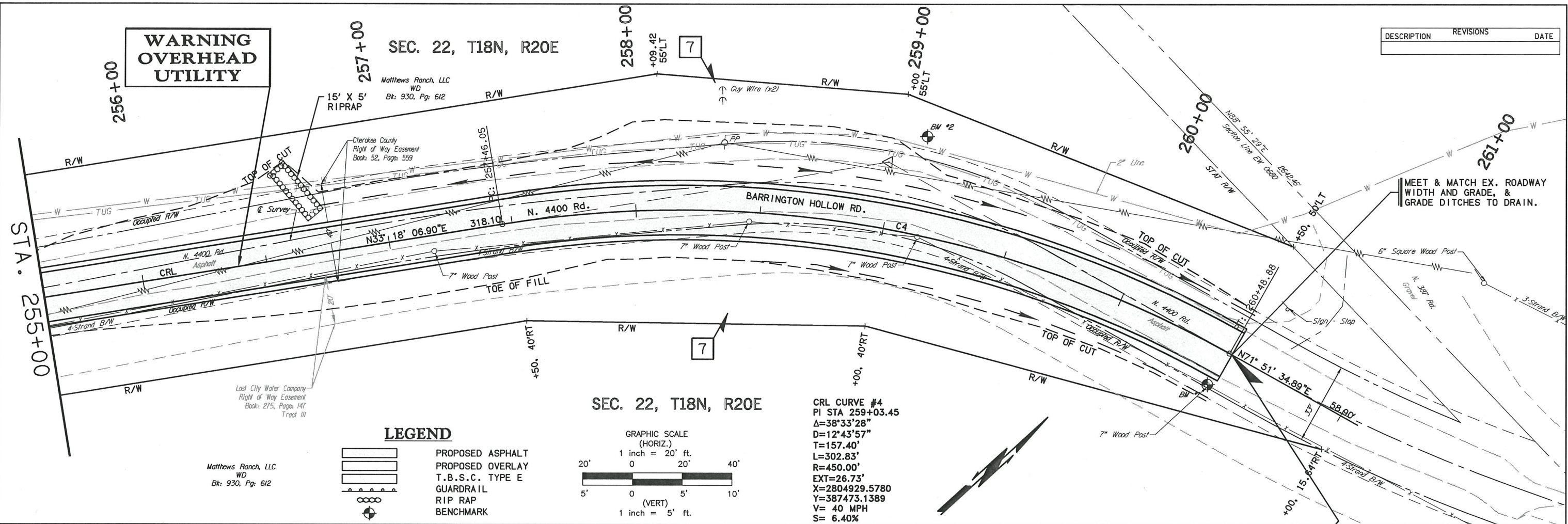


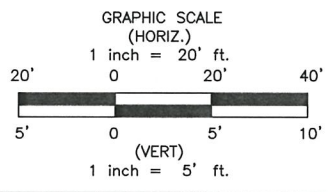
**WARNING  
OVERHEAD  
UTILITY**

DESCRIPTION	REVISIONS	DATE



**LEGEND**

- PROPOSED ASPHALT
- PROPOSED OVERLAY
- T.B.S.C. TYPE E
- GUARDRAIL
- RIP RAP
- BENCHMARK



**CRL CURVE #4**  
 PI STA 259+03.45  
 $\Delta = 38^\circ 33' 28''$   
 $D = 12^\circ 43' 57''$   
 $T = 157.40'$   
 $L = 302.83'$   
 $R = 450.00'$   
 $EXT = 26.73'$   
 $X = 2804929.5780$   
 $Y = 387473.1389$   
 $V = 40 \text{ MPH}$   
 $S = 6.40\%$

Matthews Ranch, LLC  
WD  
Bk: 930, Pg: 612

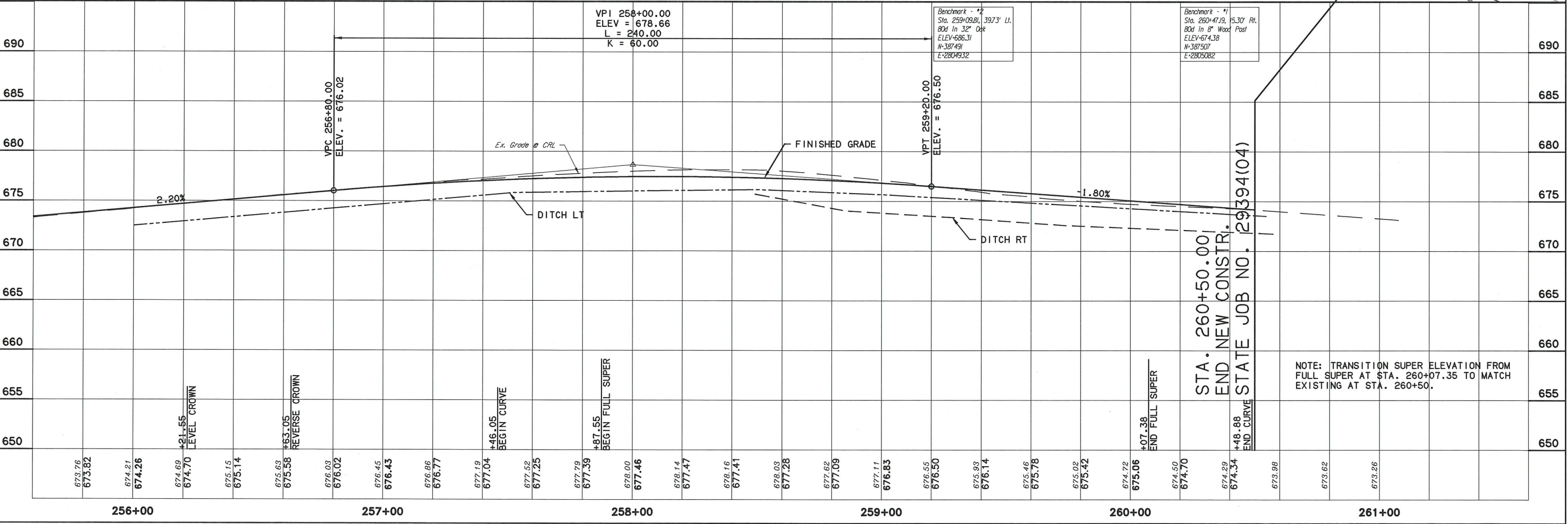
Last City Water Company  
Right of Way Easement  
Book: 275, Page: 147  
Tract III

Matthews Ranch, LLC  
WD  
Bk: 930, Pg: 612

Cherokee County  
Right of Way Easement  
Book: 52, Page: 559

MEET & MATCH EX. ROADWAY  
WIDTH AND GRADE, &  
GRADE DITCHES TO DRAIN.

Wednesday, December 02, 2015 2:39:04 PM  
V:\E13-828E-Barrington Hollow Br 22 & LWC-Cherokee 2-CED2EFC1V3DFEPLANSET828-PLAN & PROFILE.dwg



STA. 260+50.00  
END NEW CONSTR.  
STATE JOB NO. 29394(04)

NOTE: TRANSITION SUPER ELEVATION FROM  
FULL SUPER AT STA. 260+07.35 TO MATCH  
EXISTING AT STA. 260+50.