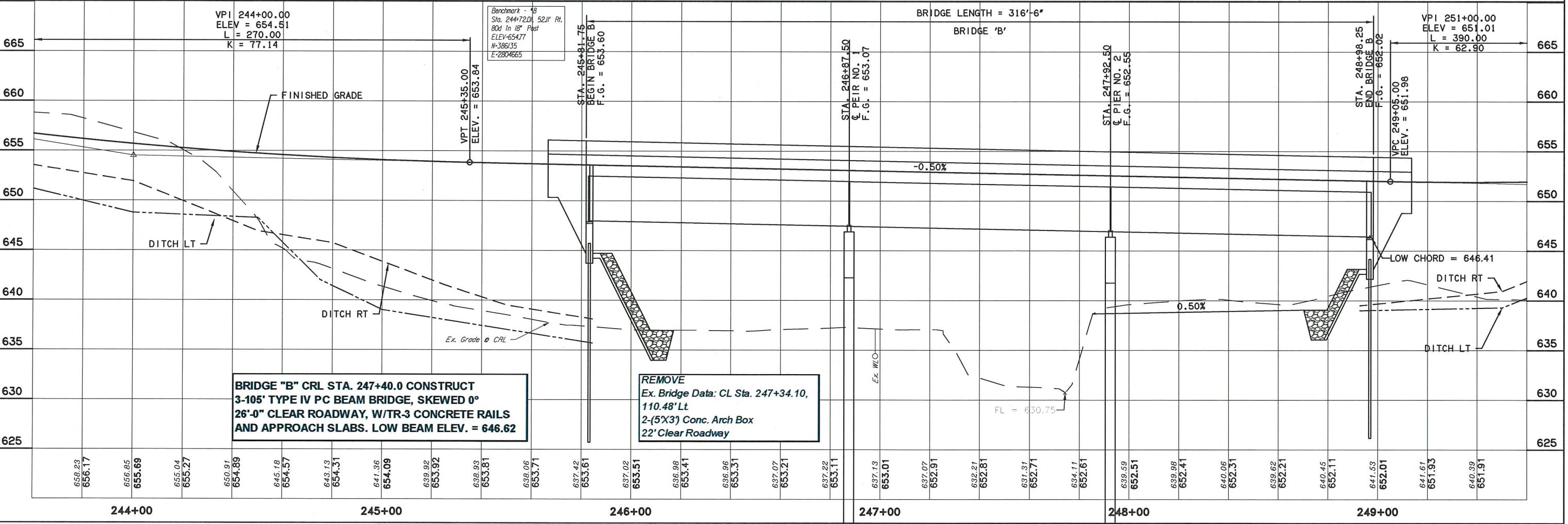
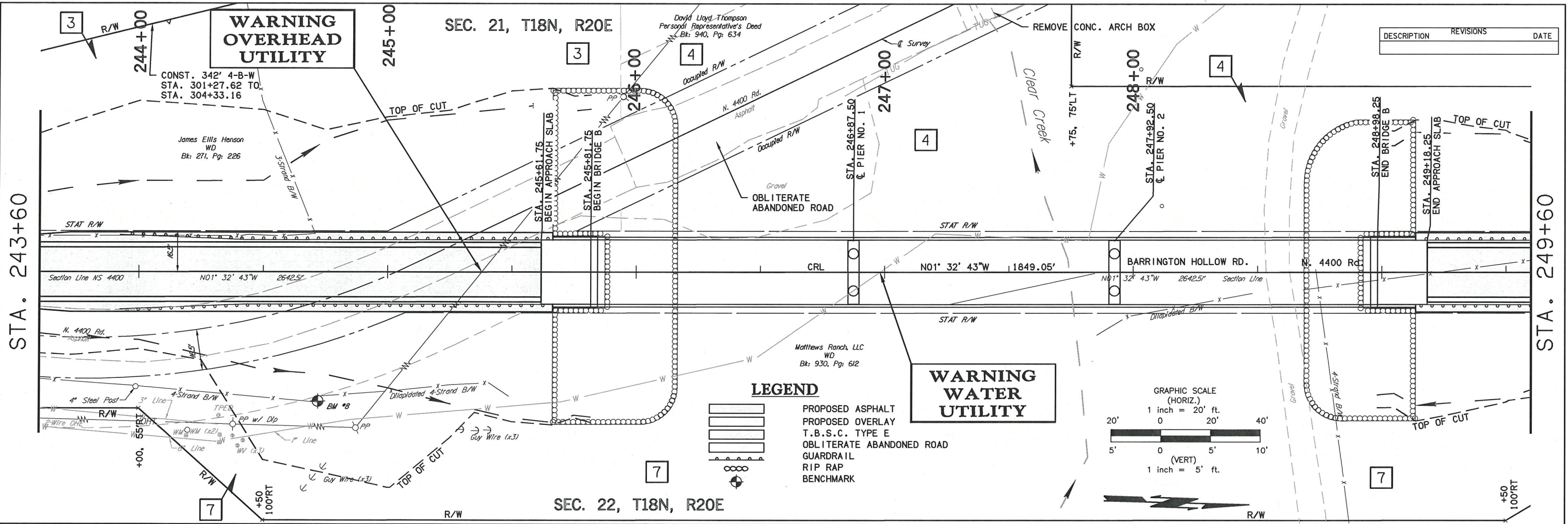


Wednesday, December 02, 2015 2:38:26 PM
 V:\L13-9828E Barrington Hollow Br 22 & LWC-Cherokee 2-CED2EC1V3DFEPLANSET828-PLAN & PROFILE.dwg



BRIDGE "B" CRL STA. 247+40.0 CONSTRUCT
3-105' TYPE IV PC BEAM BRIDGE, SKEWED 0°
26'-0" CLEAR ROADWAY, W/TR-3 CONCRETE RAILS
AND APPROACH SLABS. LOW BEAM ELEV. = 646.62

REMOVE
 Ex. Bridge Data: CL Sta. 247+34.10,
 110.48' Lt
 2-(5'X3) Conc. Arch Box
 22' Clear Roadway

DESCRIPTION	REVISIONS	DATE

