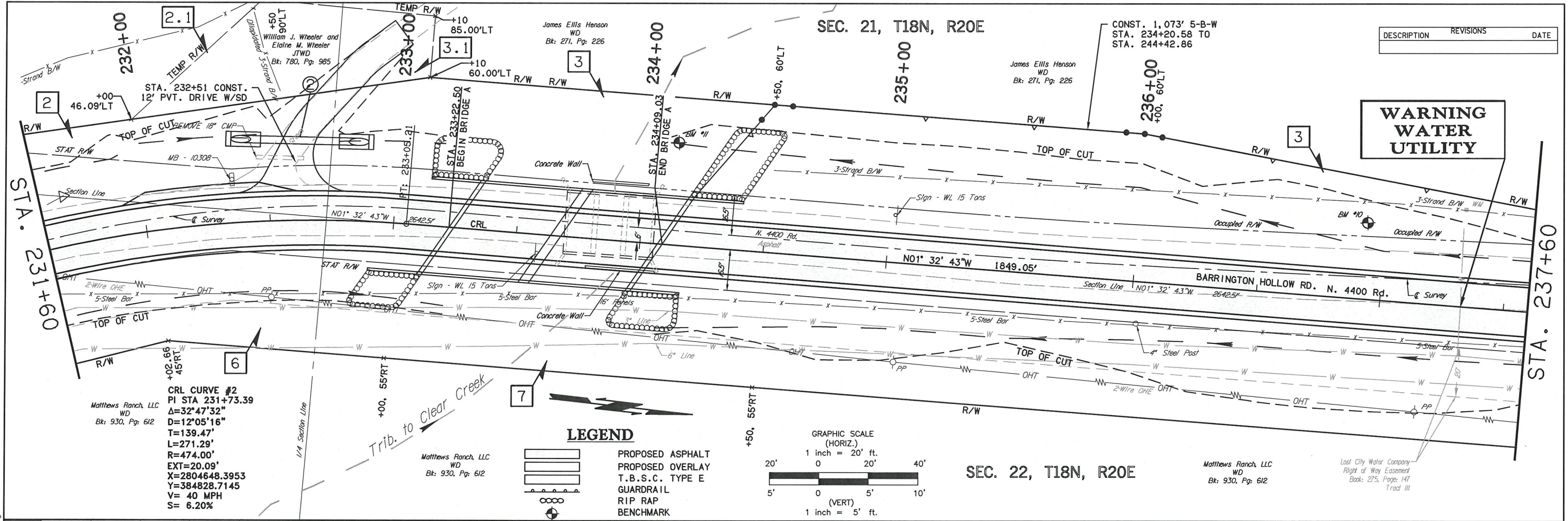


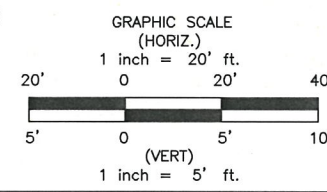
Wednesday, December 02, 2015 2:37:59 PM  
V:\13-828E Barrington Hollow Br 22 & LWC-Cherokee 2-CED2EC1V3DEPLANSE628-PLAN & PROFILE.dwg



**CRL CURVE #2**  
 PI STA 231+73.39  
 $\Delta = 32^\circ 47' 32''$   
 $D = 12^\circ 05' 16''$   
 $T = 139.47'$   
 $L = 271.29'$   
 $R = 474.00'$   
 $EXT = 20.09'$   
 $X = 2804648.3953$   
 $Y = 384828.7145$   
 $V = 40 \text{ MPH}$   
 $S = 6.20\%$

**LEGEND**

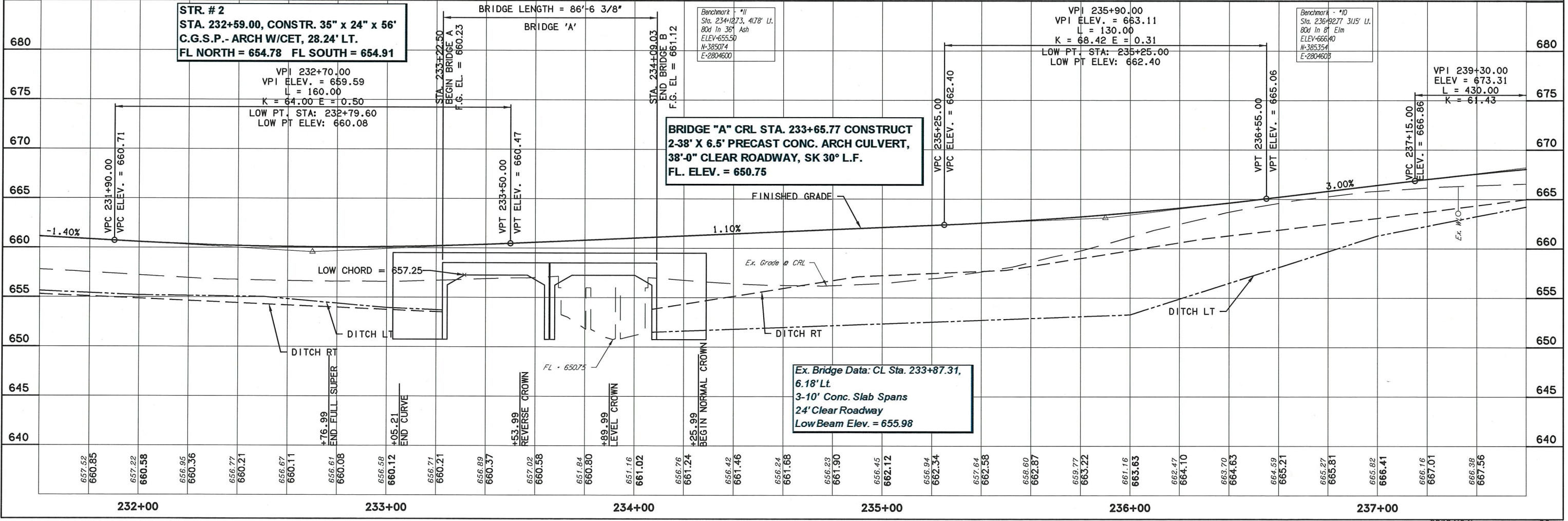
- PROPOSED ASPHALT
- PROPOSED OVERLAY
- T.B.S.C. TYPE E GUARDRAIL
- RIP RAP
- BENCHMARK



**STR. #2**  
 STA. 232+59.00, CONSTR. 35" x 24" x 56"  
 C.G.S.P. - ARCH W/CET, 28.24' L.T.  
 FL NORTH = 654.78 FL SOUTH = 654.91

BRIDGE LENGTH = 86'-6 3/8"  
 BRIDGE 'A'

**BRIDGE "A" CRL STA. 233+65.77 CONSTRUCT**  
 2-38" X 6.5' PRECAST CONC. ARCH CULVERT,  
 38'-0" CLEAR ROADWAY, SK 30° L.F.  
 FL. ELEV. = 650.75



**Ex. Bridge Data: CL Sta. 233+87.31,**  
 6.18' Lt.  
 3-10' Conc. Slab Spans  
 24' Clear Roadway  
 Low Beam Elev. = 655.98

**WARNING WATER UTILITY**

DESCRIPTION	REVISIONS	DATE