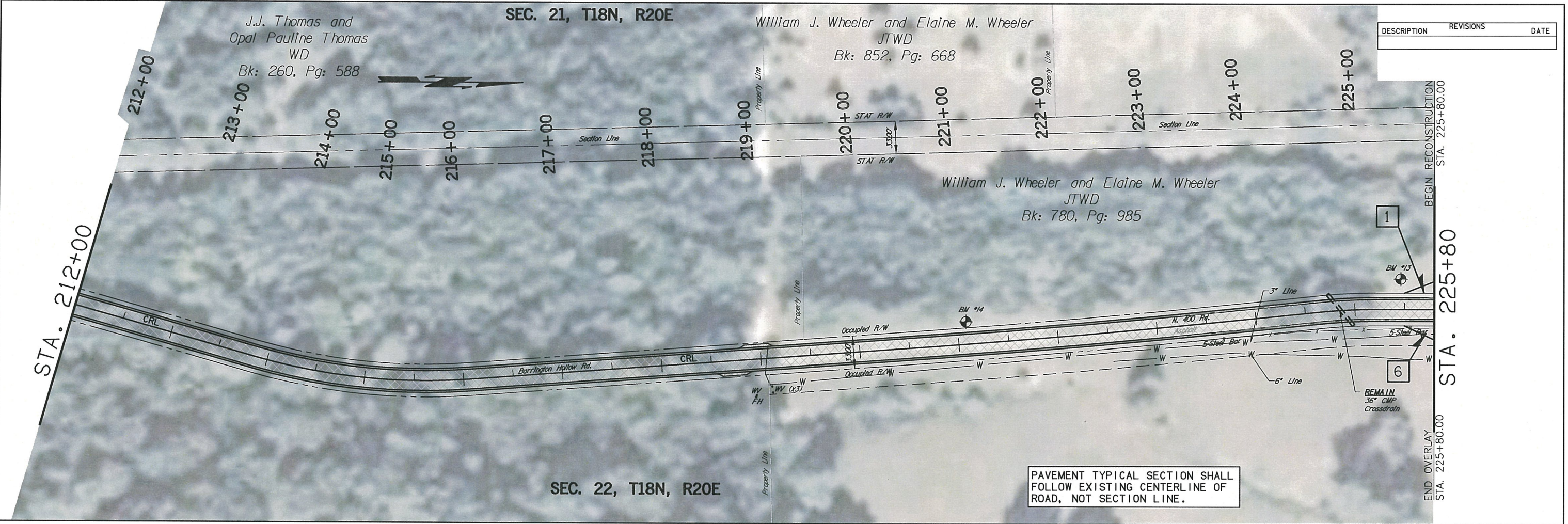


Wednesday, December 02, 2015 2:36:59 PM
 V:\13-828E Barrington Hollow Br 22 & LWC-Cherokee 2-CED2\CIV3D\PLANS\828-PLAN SHEETS.dwg



DESCRIPTION	REVISIONS	DATE




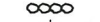

PAVEMENT TYPICAL SECTION SHALL FOLLOW EXISTING CENTERLINE OF ROAD, NOT SECTION LINE.

Benchmark - #14
 Sta. 224+08.48, 22.63' Lt.
 80d In 10" STUMP
 ELEV-669.50
 N-3838187903
 E-28048642871

Benchmark - #13
 Sta. 225+46.36, 30.77' Lt.
 80d In 15" COTTONWOOD
 ELEV-672.44
 N-3842567490
 E-28048203890

NOTE:
 ALL UTILITY LOCATIONS
 ARE APPROXIMATE.

LEGEND

-  PROPOSED OVERLAY
-  T.B.S.C. TYPE E
-  GUARDRAIL
-  RIP RAP
-  BENCHMARK

