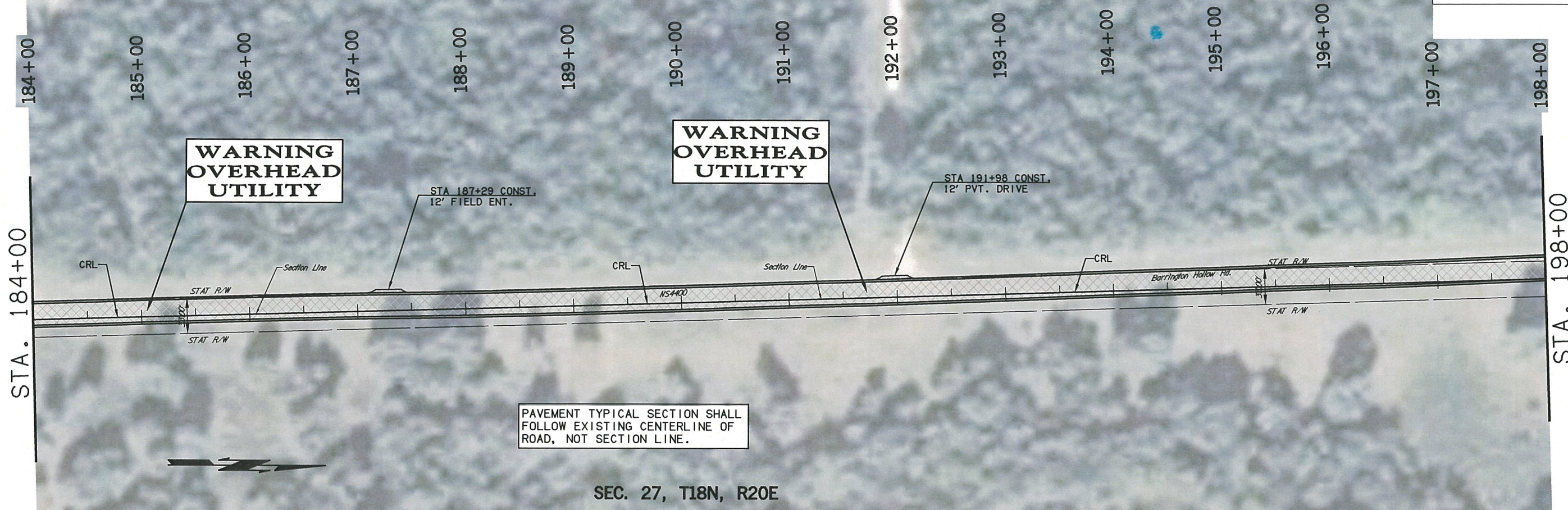


SEC. 28, T18N, R20E

DESCRIPTION	REVISIONS	DATE



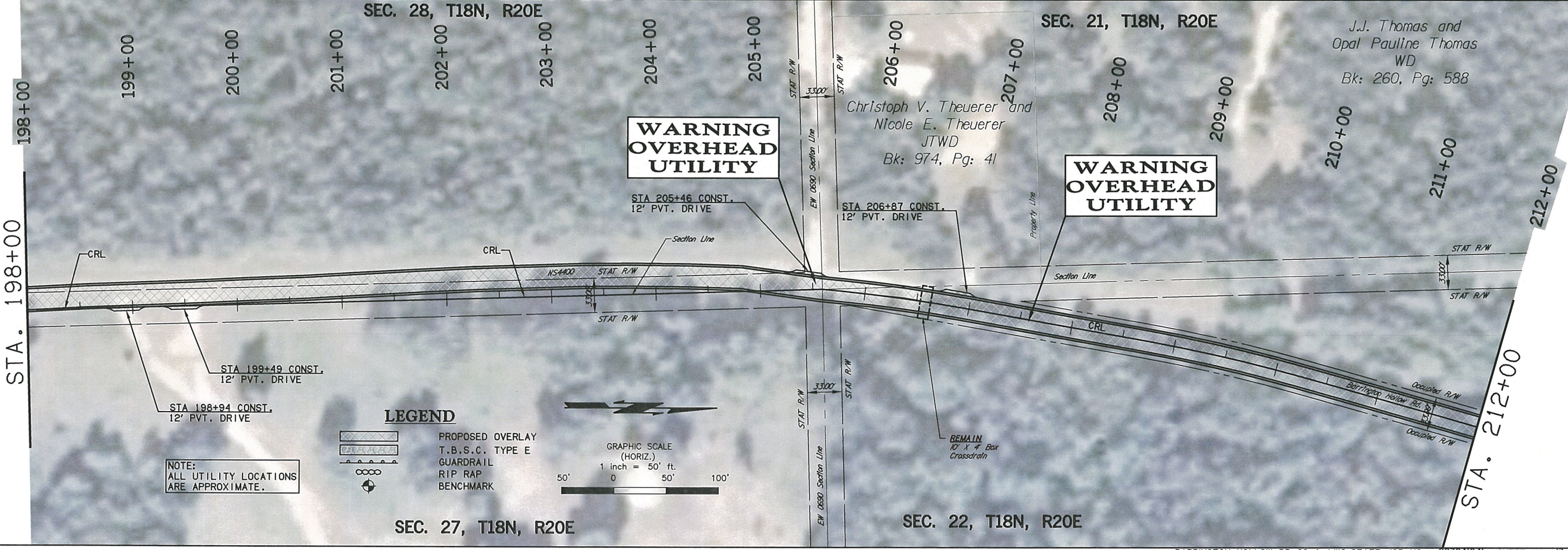
SEC. 27, T18N, R20E

SEC. 28, T18N, R20E

SEC. 21, T18N, R20E

J.J. Thomas and
Opal Pauline Thomas
WD
Bk: 260, Pg: 588

Christoph V. Theuerer and
Nicole E. Theuerer
JTWD
Bk: 974, Pg: 41



SEC. 27, T18N, R20E

SEC. 22, T18N, R20E

Wednesday, December 02, 2015 2:36:50 PM
V:\13-828E Barrington Hollow Br 22 & LWC-Cherokee 2-CED2\CV3D\PLANS\828-PLAN SHEETS.dwg