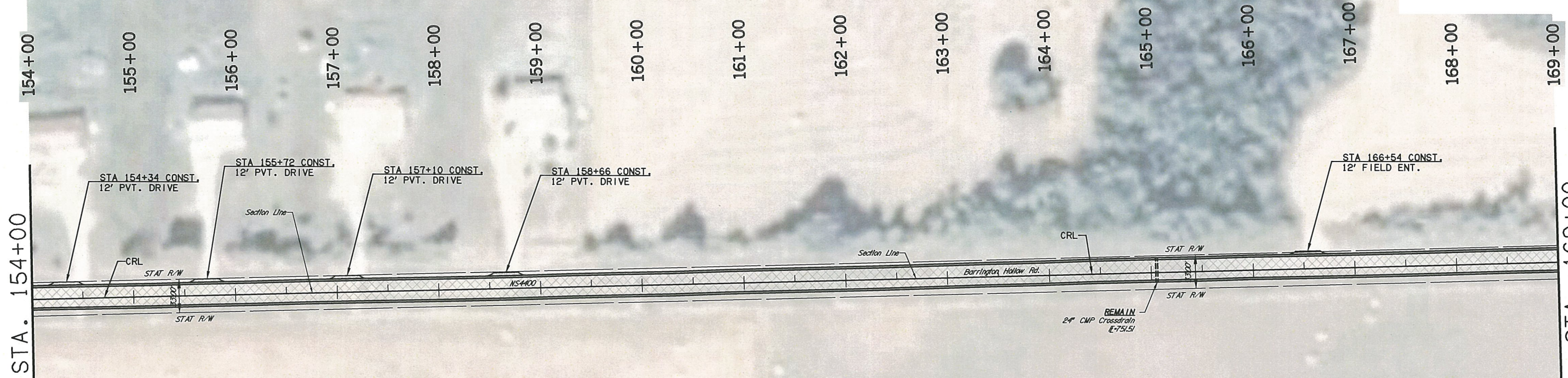


Wednesday, December 02, 2015 2:36:35 PM  
 V:\13-B2BE Barrington Hollow Br 22 & LWC-Cherokee 2-CED2\CIV3D\PLANS\B28-PLAN SHEETS.dwg

SEC. 28, T18N, R20E

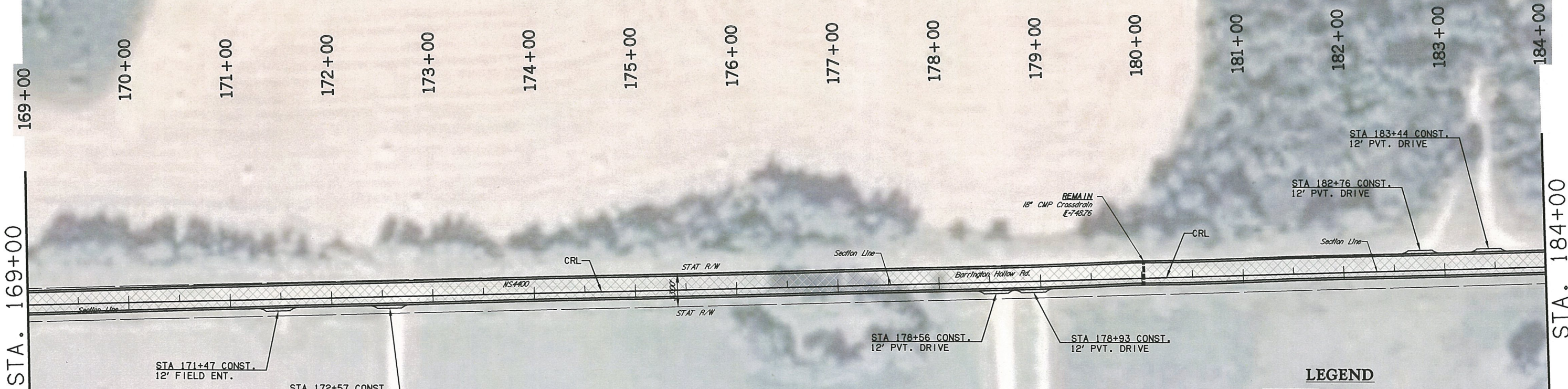
DESCRIPTION	REVISIONS	DATE



PAVEMENT TYPICAL SECTION SHALL FOLLOW EXISTING CENTERLINE OF ROAD, NOT SECTION LINE.

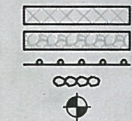
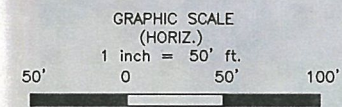
SEC. 27, T18N, R20E

SEC. 28, T18N, R20E



NOTE:  
 ALL UTILITY LOCATIONS  
 ARE APPROXIMATE.

LEGEND



PROPOSED OVERLAY  
 T.B.S.C. TYPE E  
 GUARDRAIL  
 RIP RAP  
 BENCHMARK

SEC. 27, T18N, R20E