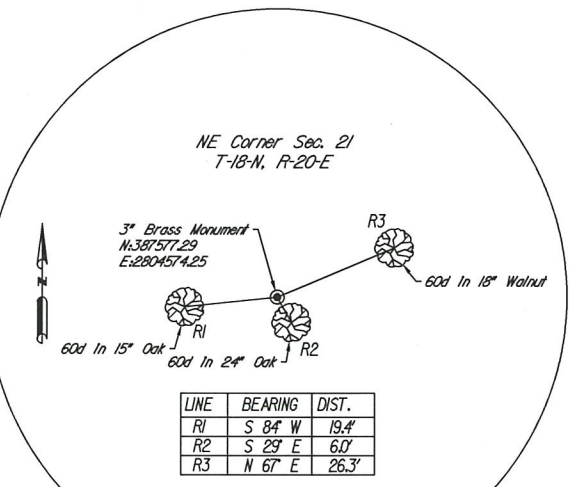
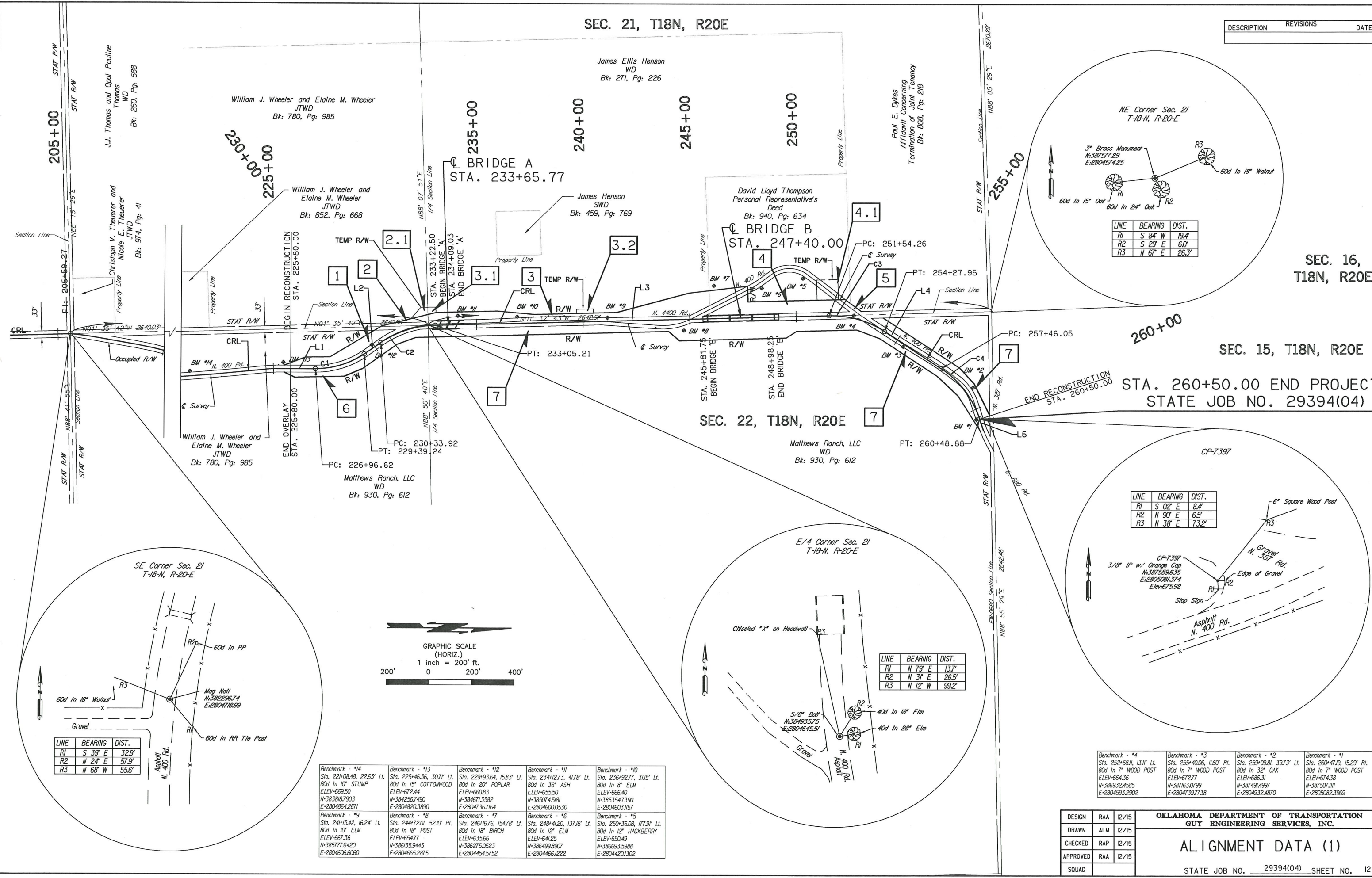


SEC. 21, T18N, R20E

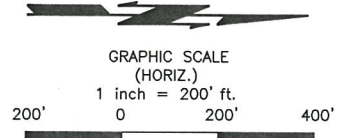
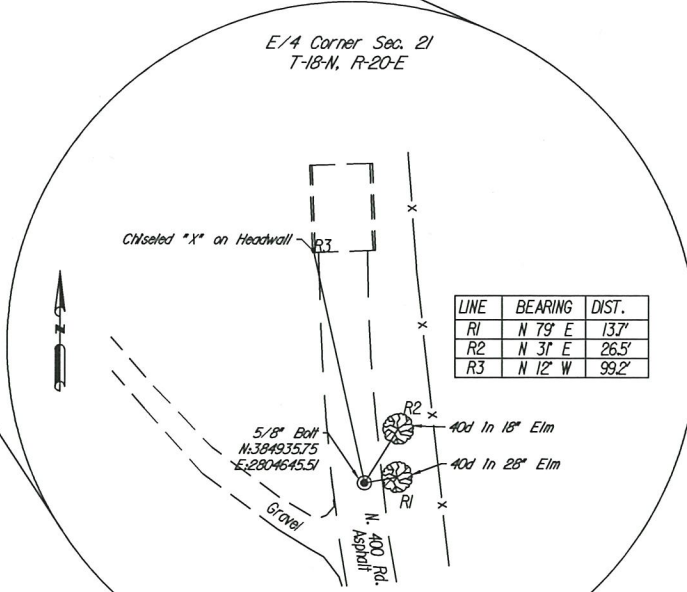
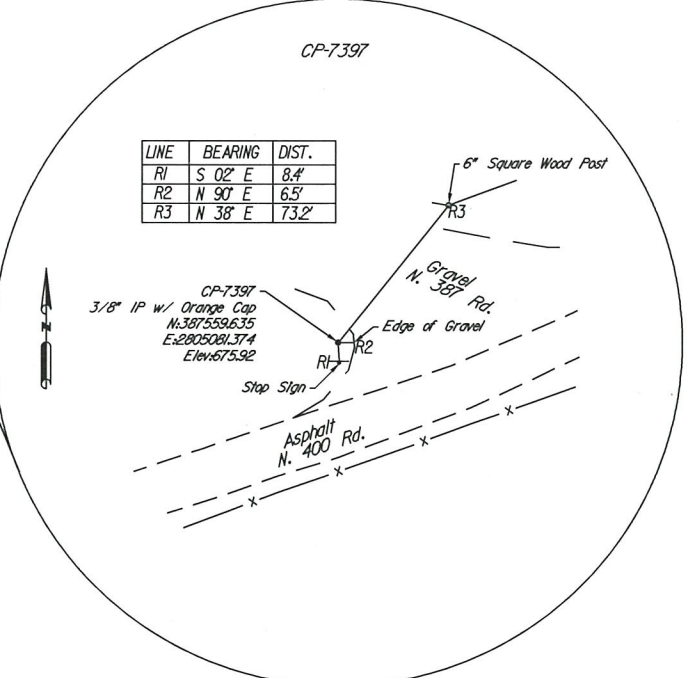
DESCRIPTION	REVISIONS	DATE



SEC. 16, T18N, R20E

SEC. 15, T18N, R20E

STA. 260+50.00 END PROJECT
STATE JOB NO. 29394(04)



Benchmark - *14 Sta. 221+08.48, 2263' Lt. 80d In 10\"/>	Benchmark - *13 Sta. 225+46.36, 3077' Lt. 80d In 15\"/>	Benchmark - *12 Sta. 229+93.64, 1583' Lt. 80d In 20\"/>	Benchmark - *11 Sta. 234+12.73, 4178' Lt. 80d In 36\"/>	Benchmark - *10 Sta. 236+92.77, 3115' Lt. 80d In 8\"/>
Benchmark - *9 Sta. 241+15.42, 1624' Lt. 80d In 10\"/>	Benchmark - *8 Sta. 244+72.01, 5210' Rt. 80d In 18\"/>	Benchmark - *7 Sta. 246+16.76, 15478' Lt. 80d In 18\"/>	Benchmark - *6 Sta. 248+41.20, 13716' Lt. 80d In 12\"/>	Benchmark - *5 Sta. 250+36.08, 1779' Lt. 80d In 12\"/>

LINE	BEARING	DIST.
R1	S 84° W	19.4'
R2	S 25° E	6.0'
R3	N 67° E	26.3'

LINE	BEARING	DIST.
R1	S 02° E	8.4'
R2	N 90° E	6.5'
R3	N 38° E	73.2'

LINE	BEARING	DIST.
R1	N 79° E	13.7'
R2	N 31° E	26.5'
R3	N 12° W	99.2'

Benchmark - *4 Sta. 252+68.11, 1311' Lt. 80d In 7\"/>	Benchmark - *3 Sta. 255+40.06, 1160' Rt. 80d In 7\"/>	Benchmark - *2 Sta. 259+09.81, 3973' Lt. 80d In 32\"/>	Benchmark - *1 Sta. 260+47.19, 1529' Rt. 80d In 7\"/>
---	---	--	---

DESIGN	RAA	12/15
DRAWN	ALM	12/15
CHECKED	RAP	12/15
APPROVED	RAA	12/15
SQUAD		

OKLAHOMA DEPARTMENT OF TRANSPORTATION
GUY ENGINEERING SERVICES, INC.

ALIGNMENT DATA (1)

STATE JOB NO. 29394(04) SHEET NO. 12
CHEROKEE COUNTY BARRINGTON HOLLOW BR 22 & LWC

Wednesday, December 02, 2015 2:35:21 PM
V:\13-828E Barrington Hollow Br 22 & LWC-Cherokee 2-CED2\CIV3D\PLANS\828-ALIGNMENT DATA.dwg