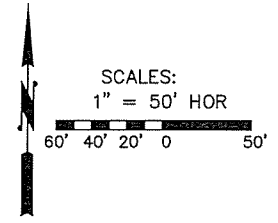
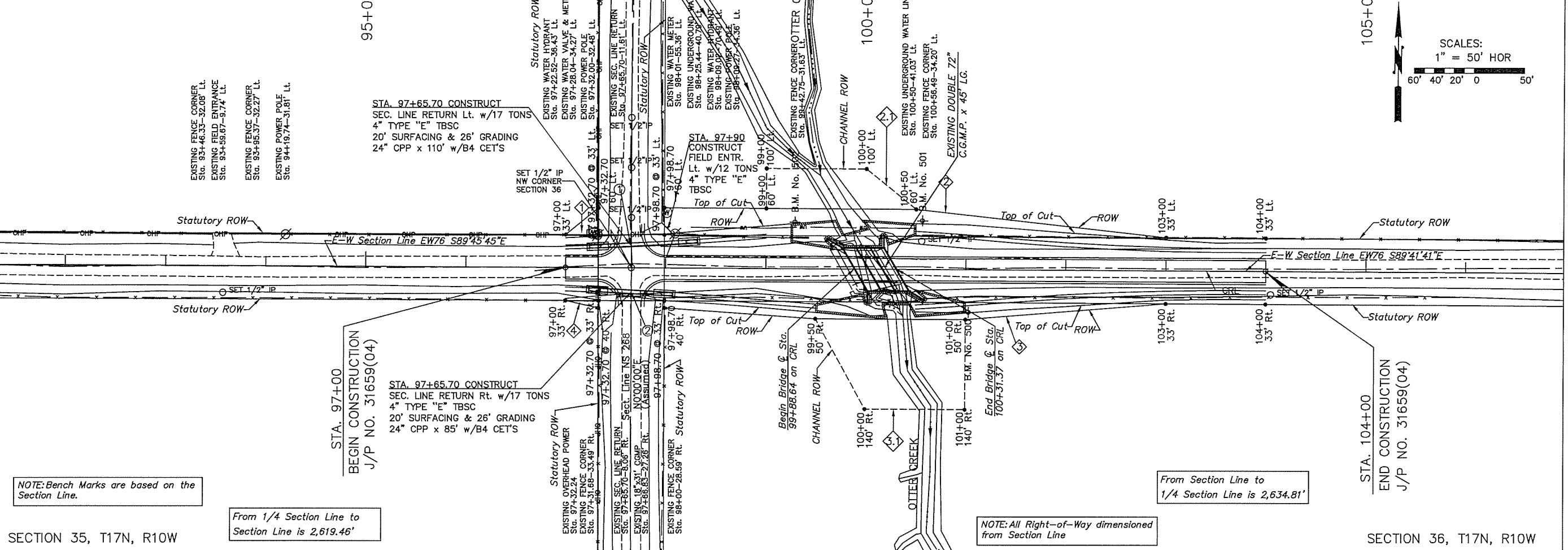


SECTION 26, T17N, R10W

SECTION 25, T17N, R10W



NOTE: Bench Marks are based on the Section Line.

From 1/4 Section Line to Section Line is 2,619.46'

From Section Line to 1/4 Section Line is 2,634.81'

NOTE: All Right-of-Way dimensioned from Section Line

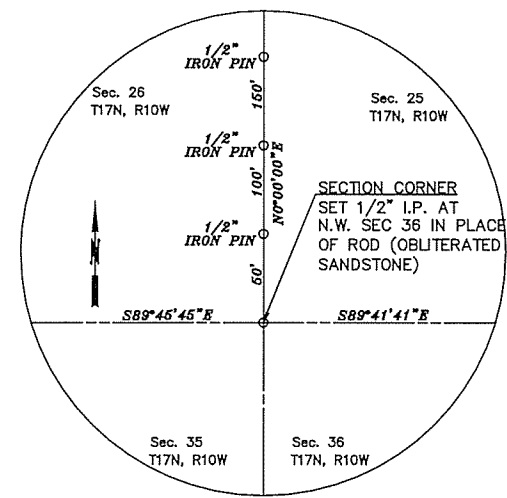
SECTION 35, T17N, R10W

SECTION 36, T17N, R10W

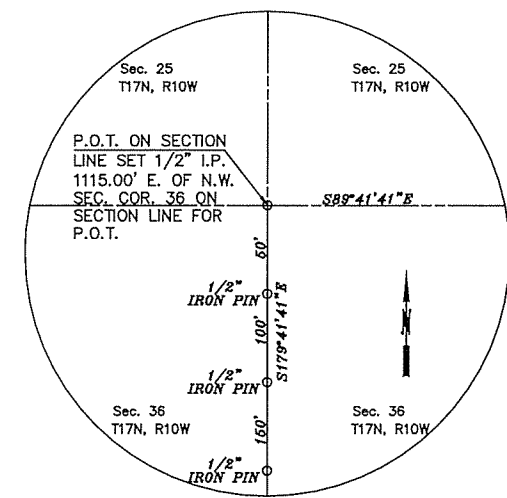
B.M. #500-1/2" Iron Pin
Sta. 101+02.90
42.74 Ft. Rt.
Elev. 1212.73

B.M. #501-1/2" Iron Pin
Sta. 100+56.53
48.44 Ft. Lt.
Elev. 1213.34

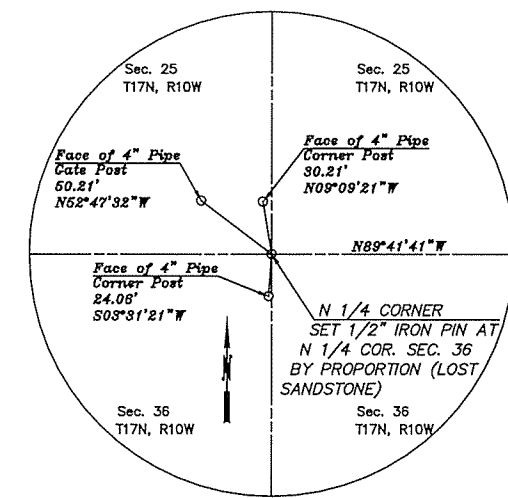
B.M. #502-1/2" Iron Pin
Sta. 99+29.00
46.58 Ft. Lt.
Elev. 1212.55



N.W. SECTION CORNER
SECTION 36, T17N, R10W
STA. 97+65.70
X=1901052.4082
Y=332472.2892



P.O.T. ON SECTION LINE
SECTION 36, T17N, R10W
STA. 108+80.70
X=1902167.3923
Y=332466.3486



N. 1/4 SECTION CORNER
SECTION 36, T17N, R10W
STA. 124+00.51
X=1903687.1773
Y=332458.2513

BLAINE COUNTY		OTTER CREEK	
Design	J.S.N. 09/15	ALIGNMENT, SURVEY REFERENCES AND R/W	
Drawn	J.R.J. 12/15		
Checked	M.W.G. 04/16		
Approved	J.S.N. 04/16		
Consultant	CED #7		
STATE/JOB No. 31659(04)		Sheet No. 5	