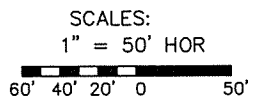
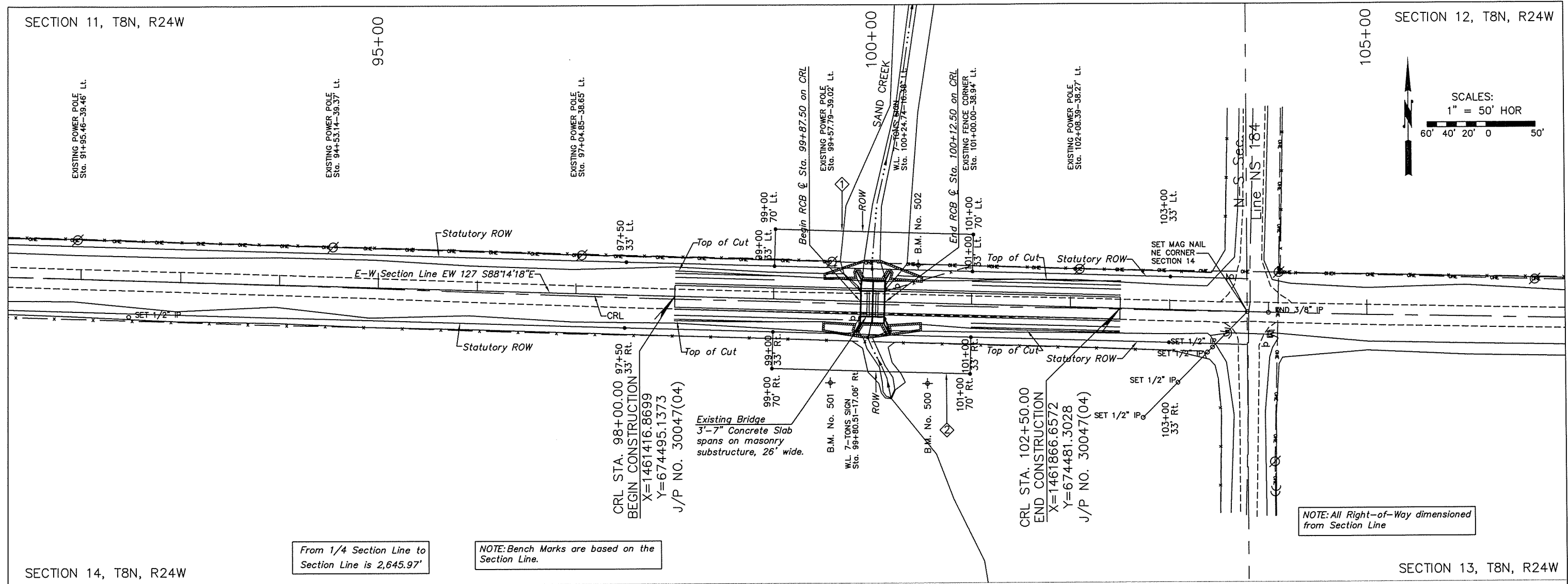


SECTION 11, T8N, R24W

SECTION 12, T8N, R24W



NOTE: All Right-of-Way dimensioned from Section Line

From 1/4 Section Line to Section Line is 2,645.97'

NOTE: Bench Marks are based on the Section Line.

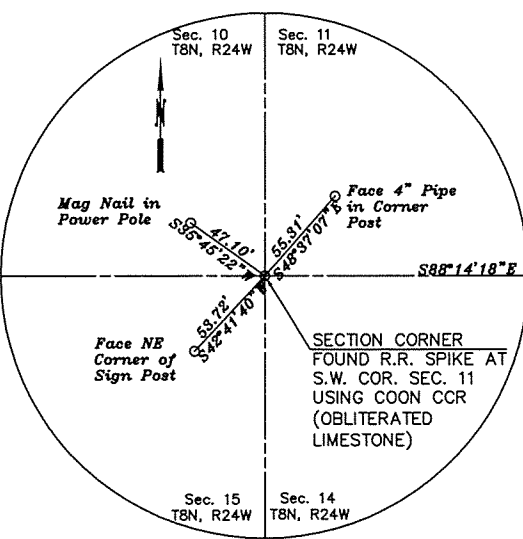
SECTION 14, T8N, R24W

SECTION 13, T8N, R24W

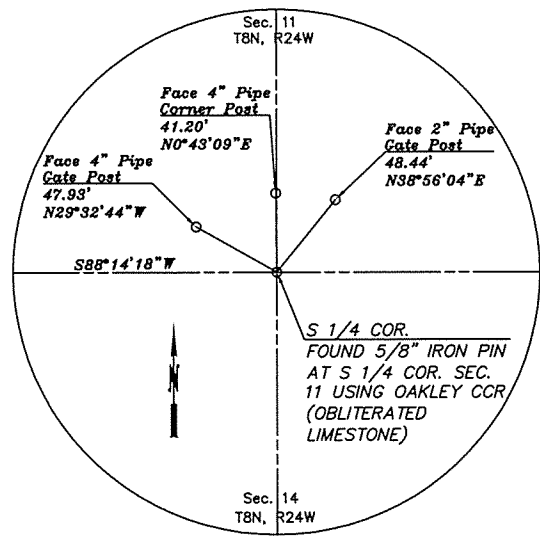
B.M. #500—Set 1/2" Iron Pin with Control Cap 80.73 Ft. Rt. Sta. 100+57.49 Elev. 1928.20

B.M. #501—Set 1/2" Iron Pin with Control Cap 82.50 Ft. Rt. Sta. 99+59.25 Elev. 1927.79

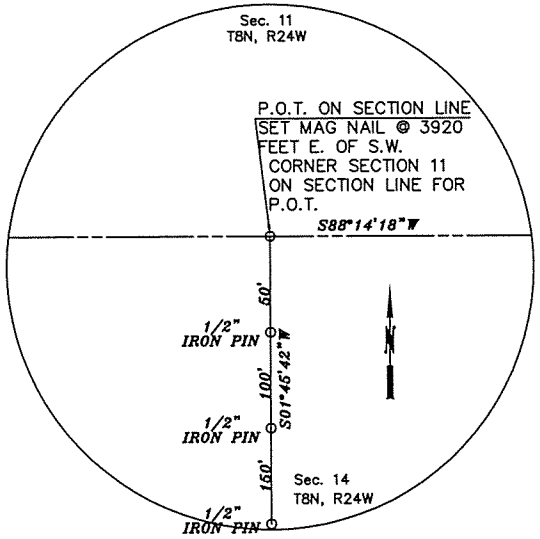
B.M. #502—Set 1/2" Iron Pin with Control Cap 38.02 Ft. Lt. Sta. 100+44.76 Elev. 1926.85



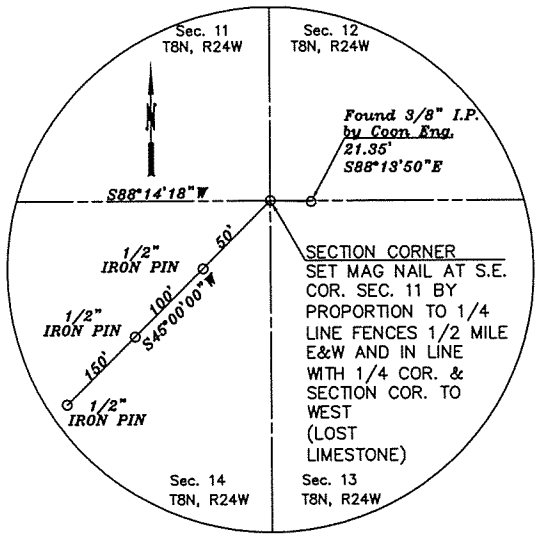
S.W. SECTION CORNER
SECTION 11, T8N, R24W
STA. 51+39.79
X=1456758.8590
Y=674638.4048



S. 1/4 SECTION CORNER
SECTION 11, T8N, R24W
STA. 77+32.63
X=1459350.4763
Y=674558.6951



P.O.T. ON SECTION LINE
SECTION 11, T8N, R24W
STA. 90+59.79
X=1460677.0064
Y=674517.8939



S.E. SECTION CORNER
SECTION 11, T8N, R24W
STA. 103+78.60
X=1461995.1923
Y=674477.3493

Design	J.S.N. 09/15
Drawn	J.R.J. 10/15
Checked	M.W.G. 03/16
Approved	J.S.N. 03/16
Consultant	CEC #7

BECKHAM COUNTY TRIB. OF SAND CREEK
ALIGNMENT, SURVEY REFERENCES AND R/W
STATE/JOB No. 30047(04) Sheet No. 5