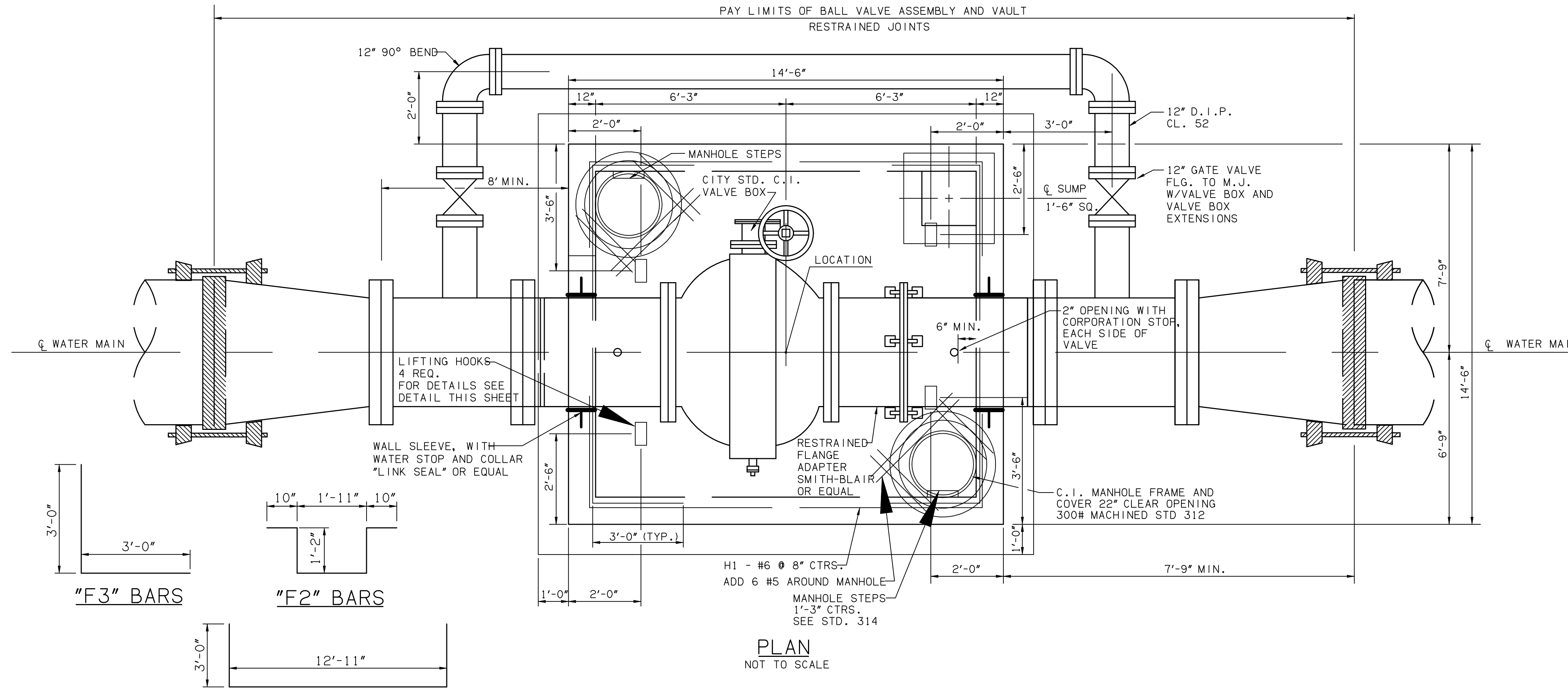


4/13/2012

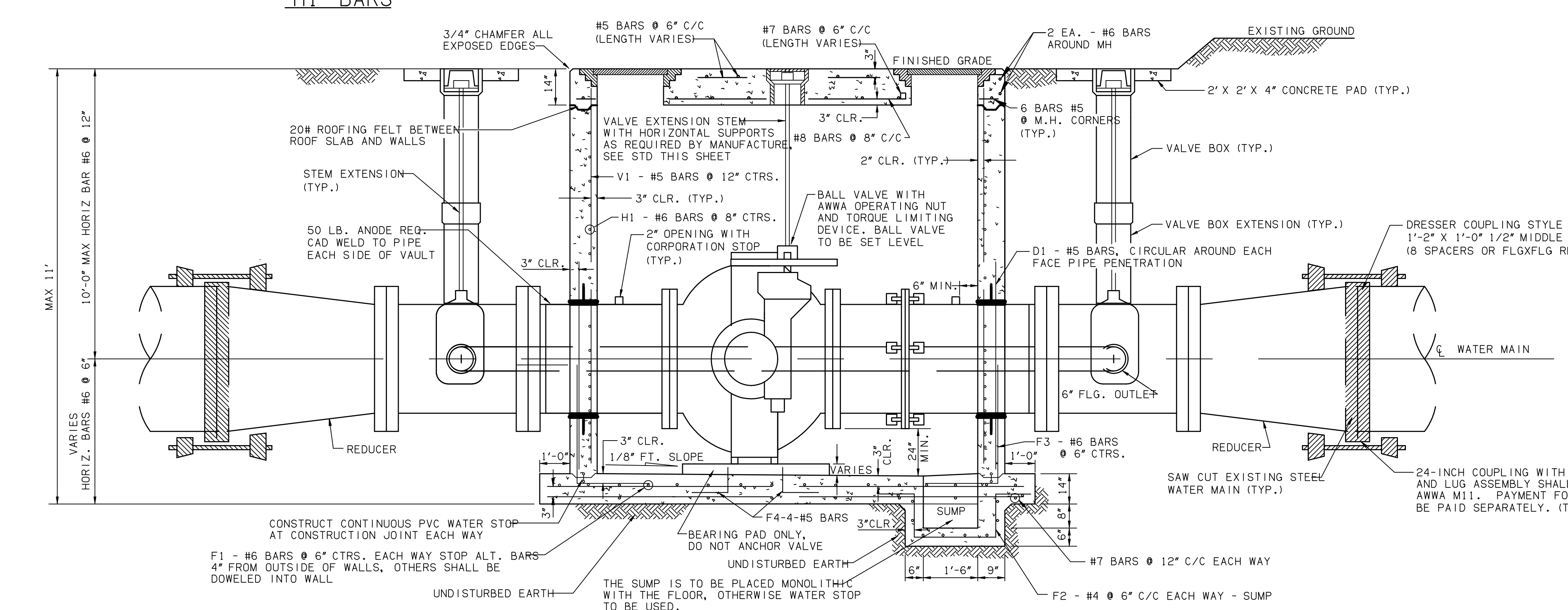
Ih05127 AM

P:\tul\gva\406062\000_20_cad\dgn\c\U\cot_326-361mbv-48in.dgn

OFF. DIVISION	STATE	J/P PROJ NO	FISCAL YEAR	SHEET NO	TOTAL SHEETS
8	OKLA	06374(47)	2012	374	565



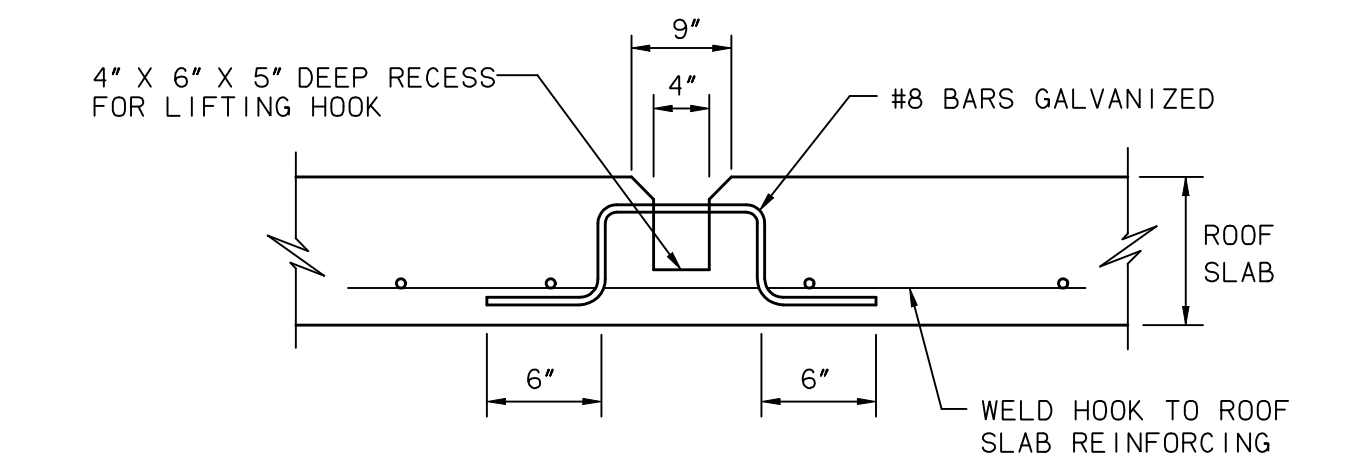
PLAN NOT TO SCALE



ELEVATION NOT TO SCALE

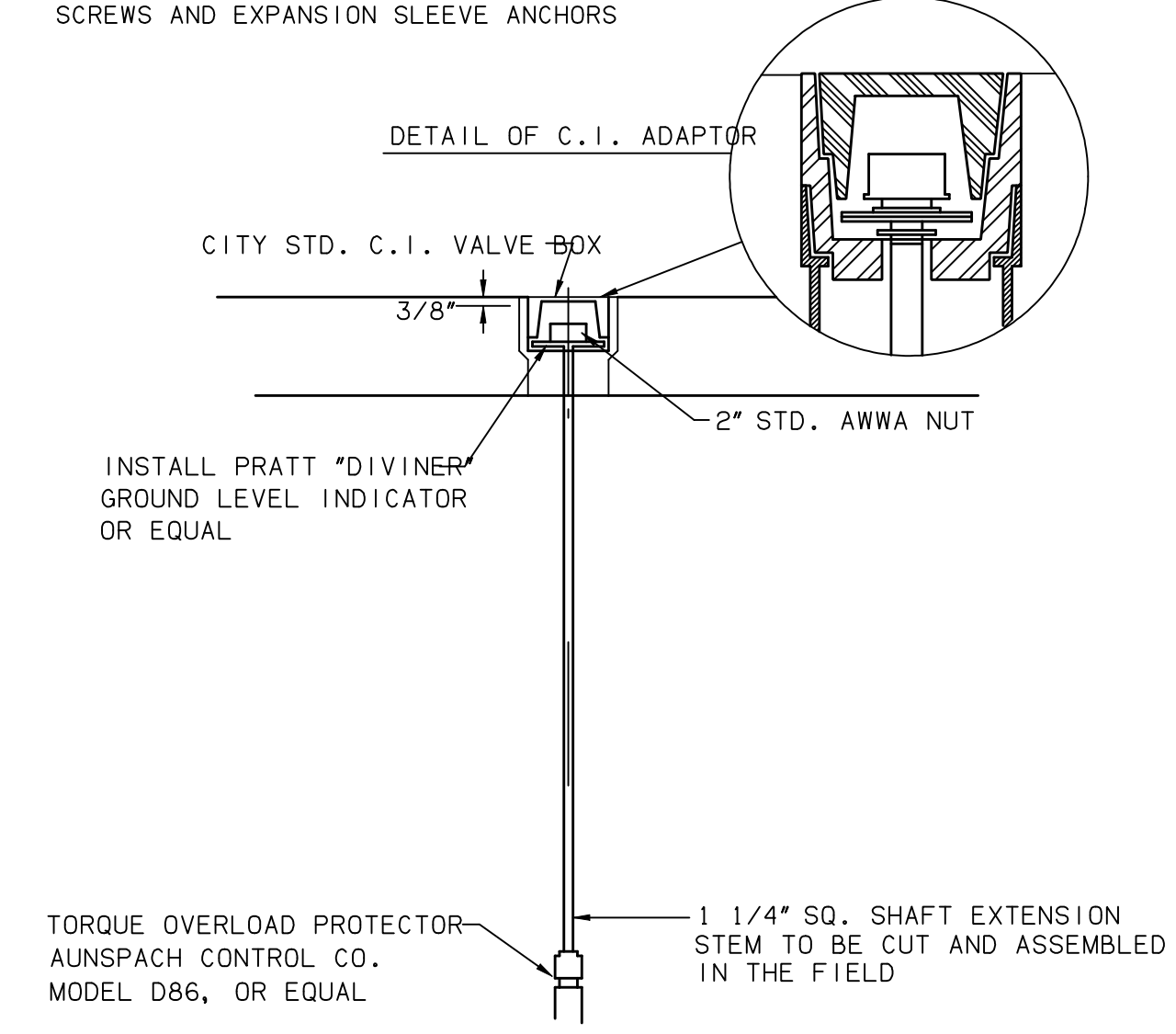
NOTE:

1. THE BALL VALVE ASSEMBLY AND VAULT SHALL NOT INCLUDE, BUT NOT LIMITED TO, CLEARING, EXCAVATION, REINFORCED CONCRETE, LIFTING HOOKS, CASTINGS, BALL VALVE WITH WHEEL AND OPERATOR NUT VALVE EXTENSION STEM WITH HORIZONTAL SUPPORTS, INDICATOR, RESTRAINED ADAPTERS, REDUCER, WALL SLEEVE, LINK SEAL, ALL PIPING, FITTINGS, BYPASS PIPING, GATE VALVES, GATE VALVE WITH VALVE BOX AND VALVE BOX EXTENSION, CATHODIC PROTECTION, 2" CORPORATION COCK, TRANSITION COUPLING WITH AWWA M11 HARNESS AND LUG ASSEMBLY, IF USED, BACKFILL, RESTORATION, AND APPURTENANCES REQUIRED FOR A COMPLETE INSTALLATION.
2. ALL BYPASS PIPING TO BE RESTRAINED MECHANICAL JOINTS, EBBA MEGALUGS SERIES #1100, OR EQUAL.
3. STEEL PIPE, CONCRETE PIPE (AWWA 301), OR DUCTILE IRON PIPE (CLASS 52) SHALL BE USED THROUGH VALVE VAULTS. DRESSER COUPLINGS, STYLE 38, TO BE INSTALLED AT A MINIMUM DISTANCE OF 8" FROM VALVE VAULT. "DRESSERLOY" BOLTS SHALL BE USED ON ALL DRESSER COUPLINGS. HARNESS AND LUG ASSEMBLY REQUIRED WITH EITHER IRON OR STEEL. ROTATE LUG ASSEMBLY SO AS NOT TO INTERFERE WITH GATE VALVE.
4. BOLTS AND NUTS SHALL CONFORM TO ASTM A307 GRADE B AND ASTM A563, GRADE A, RESPECTIVELY.
5. REINFORCING STEEL SHOP DRAWINGS ARE TO BE SUBMITTED TO THE ENGINEER FOR APPROVAL PRIOR TO MATERIAL DELIVERED TO THE JOB SITE.
6. SEE STD 330 FOR CATHODIC PROTECTION.



LIFTING HOOK DETAIL NOT TO SCALE

NOTE: IN SIDEWALKS, COVER HOOK OPENING WITH A STEEL PLATE. SECURE WITH SCREWS AND EXPANSION SLEEVE ANCHORS



STEM EXTENSION FOR BALL VALVE NOT TO SCALE

FOR REFERENCE ONLY

Design		I-44 & LEWIS INTERCHANGE	CITY OF TULSA STD.326
Drawn		TULSA COUNTY	
Checked		30" THRU 48" BALL VALVE VAULT	
Approved		UNDER H-20 LOADING	
Squad		Job Piece No. 06374(47)	Sheet No. 374